

1. (a) D.C. Law prohibits chauffeurs, take-home vehicles, and the use of SUVs (see D.C. Code 50-203, 50-204). Is your agency in compliance with this law? Please explain any exceptions.
- (b) If there are exceptions, please provide the following:
 - (1) Type of vehicle (make, model, year);
 - (2) individuals (name/position) authorized to have the vehicle;
 - (3) jurisdictional residence of the individual (e.g., Bowie, MD); and
 - (4) justification for the take-home status.

Response:

(a) The DOC is in compliance with these laws. The Department's K-9 units and the Inmate Work Squad Supervisor (who supervises inmate details operating in the community) do utilize sport utility vehicles, which is permissible as a security vehicle under § 50-203(b).

With regard to take-home vehicles, the DOC has complied with this law as changed by Section 812(a)(3) of the District of Columbia Appropriations Act, 2008 (P.L. 110-161; HR 265-195). This section reads as follows:

(a) Except as otherwise provided in this section, none of the funds made available by this Act or by any other Act may be used to provide any officer or employee of the District of Columbia with an official vehicle unless the officer or employee uses the vehicle only in the performance of the officer's or employee's official duties. For purposes of this paragraph, the term `official duties' does not include travel between the officer's or employee's residence and workplace, except in the case of--

(1) an officer or employee of the Metropolitan Police Department who resides in the District of Columbia or is otherwise designated by the Chief of the Department;

(2) at the discretion of the Fire Chief, an officer or employee of the District of Columbia Fire and Emergency Medical Services Department who resides in the District of Columbia and is on call 24 hours a day or is otherwise designated by the Fire Chief;

*(3) at the discretion of the Director of the Department of Corrections, an officer or employee of the District of Columbia Department of Corrections who resides in the District of Columbia and is on call 24 hours a day **or is otherwise designated by the Director;***

(4) the Mayor of the District of Columbia; and

(5) the Chairman of the Council of the District of Columbia.

All DOC vehicles are in compliance with the law.

DOC employees who take government vehicles home are K-9 officers specifically designated by the Director to use these vehicle pursuant to (a)(3) above. The below listed vehicles are utilized by the K-9 unit for transporting the assigned dogs:

Dodge Durango 4X4 2009
Lieutenant Marshal Day
Stafford Virginia
K-9 Commander

Dodge Durango 4X4 2009
Sergeant Herman Austin
Fort Washington, Maryland
K-9 Officer

Ford Explorer 4X4 2009
Sergeant Gerald Lester
Manassas, Virginia
K-9 Officer

Ford, Explorer 4X4 2010
Corporal David Thomas
Fort Washington, Maryland
K-9 Officer

Ford, Explorer 4X4 2009
Corporal Joe Holloway
Fort Washington, Maryland
K-9 Officer

The below listed vehicle is used to transport work squads and during inclement weather:

Chevy Tahoe 4X4 2006
Sergeant Julian Battle

2. Please provide the number of grievances filed by prisoners at the CDF since January 1, 2010. How many of these received a response within 15 days? How many received a response within 31 days? How many were appealed to Level 2? How many Level 2 complaints received a response within 15 days? How many Level 2 complaints received a response within 31 days? How many reached the Director level (Level 3)? What was the average response time at Level 3?

Response:

In the period January 1, 2010 to present, the CDF processed eighteen (18) formal grievances (IGPs). Seventeen (17) of these were closed within 15 days at a closure rate of 94.44 %; one (1) required (31) days to close. No appeals were filed at levels two (2) or three (3)

Since January 1, 2010 the CDF has processed 816 Informal Inmate Complaints (IRCs) with a closure rate of 95.65%.

3. Please provide the inmate population at the CDF and CTF (DOC inmates only) as of the first Monday of the month for fiscal years 2009 – 2011 (to date). Why has the population declined?

Response:

The data showing the inmate population for DOC inmates at the CDF and CTF on the first Monday of the month for fiscal years 2009-2011 (to-date) is provided in Table 1.

Table 1. Inmate population at DOC facilities for FY 2009-FY 2011 (year to date through 2-28-2011)

Year	Month	Date	CDF	CTF	Contract Halfway Houses	DOC System
2008	10	10/6/2008	1936	1112	115	3163
2008	11	11/3/2008	1967	961	112	3040
2008	12	12/1/2008	1877	938	133	2948
2009	1	1/5/2009	1896	813	126	2835
2009	2	2/2/2009	1604	1138	118	2860
2009	3	3/2/2009	1796	1023	109	2928
2009	4	4/6/2009	1936	1056	112	3104
2009	5	5/4/2009	2103	954	113	3170
2009	6	6/1/2009	2033	970	122	3125
2009	7	7/6/2009	2143	973	119	3235
2009	8	8/3/2009	2138	965	107	3210
2009	9	9/7/2009	2074	965	122	3161
2009	10	10/5/2009	2144	969	125	3238
2009	11	11/2/2009	2058	972	114	3144
2009	12	12/7/2009	2019	986	113	3118
2010	1	1/4/2010	1970	937	118	3025
2010	2	2/1/2010	2089	838	123	3050
2010	3	3/1/2010	2094	816	105	3015
2010	4	4/5/2010	2150	791	108	3049
2010	5	5/3/2010	2177	790	111	3078
2010	6	6/7/2010	2075	772	107	2954
2010	7	7/5/2010	2089	942	102	3133
2010	8	8/2/2010	2158	851	109	3118
2010	9	9/6/2010	2112	877	97	3086
2010	10	10/4/2010	2160	831	74	3065
2010	11	11/1/2010	2080	818	109	3007
2010	12	12/6/2010	2014	782	112	2908
2011	1	1/3/2011	1947	725	112	2784
2011	2	2/7/2011	1948	778	116	2842

This is presented in graphical format below in Figure 1.

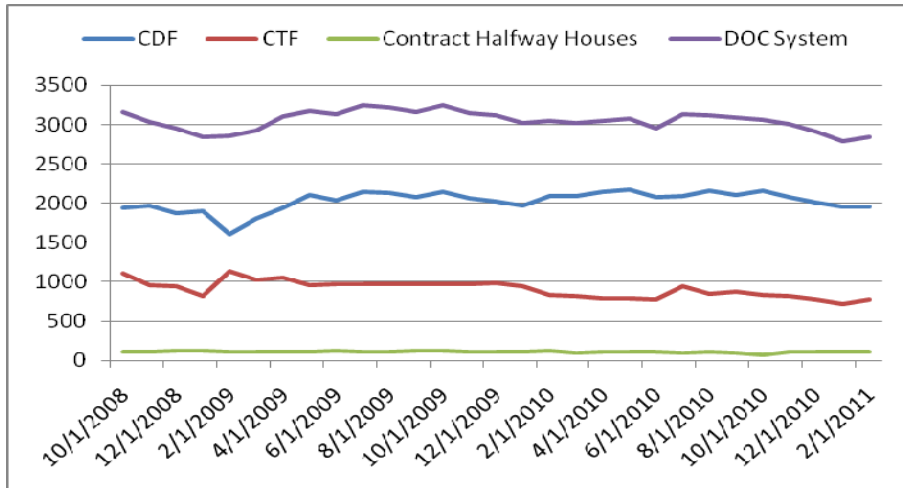


Figure 1. Inmate population by DOC Facility on the first Monday of the month for FY 2009 through FY 2011 (year to date through 2-28-2011).

The DOC inmate population consists of 6 major types of inmates; these are writs and holds (WH), parole violators (PV), pretrial felons (PF), sentenced felons (SF), pretrial misdemeanants (PM), sentenced misdemeanants (SM); inmate records which cannot be neatly classified are counted in the catch all category of other (OT). Trends for the specified time period for these categories of inmates are presented in Figure 2.

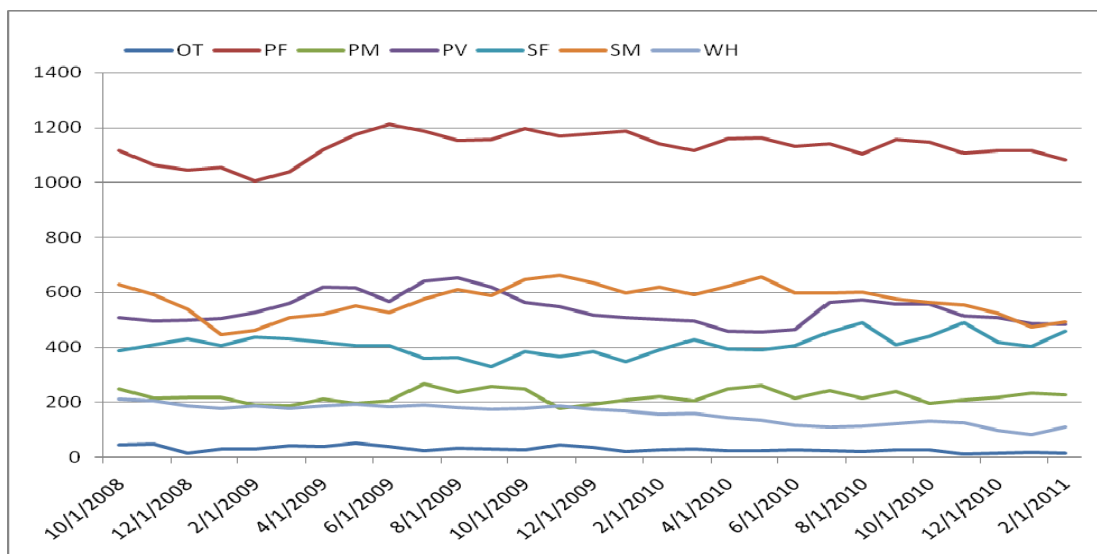


Figure 2. Trends in DOC inmate population by inmate category for the period FY 2009 to FY 2011 (year to date through 2-28-2011).

Slight increases in the number of sentenced felons and a steady level of pretrial misdemeanants have been more than offset by declines in population for the parole violators, pretrial felons (lower rates of intake, lower crime rate in this category), sentenced misdemeanants, and writs and holds. Recently good time credits have resulted in further decreases in sentenced misdemeanant and short term sentenced felon populations. Together this has resulted in lower capacity utilization levels at DOC facilities.

4. Please provide, on a monthly basis, the number of inmate on inmate assaults, assaults on staff, and allegations of staff on inmate assaults, for calendar years 2008, 2009, 2010, and 2011 to date. Please explain the trend, if any.

Response:

Inmate on inmate assaults for the period January 2008 through March 1, 2011 are presented in Table 1 below.

Table 1. Inmate on Inmate Assaults at the CDF from January 2008 through March 1, 2011

	2008	2009	2010	2011
JAN	6	16	6	15
FEB	3	15	8	14
MAR	2	13	10	6
APR	11	21	14	
MAY	5	16	9	
JUN	5	25	17	
JUL	2	10	10	
AUG	4	12	10	
SEP	3	12	19	
OCT	7	16	12	
NOV	7	1	4	
DEC	7	7	6	

Figure1 depicts the data in graphical form; the lack of trend is evident.

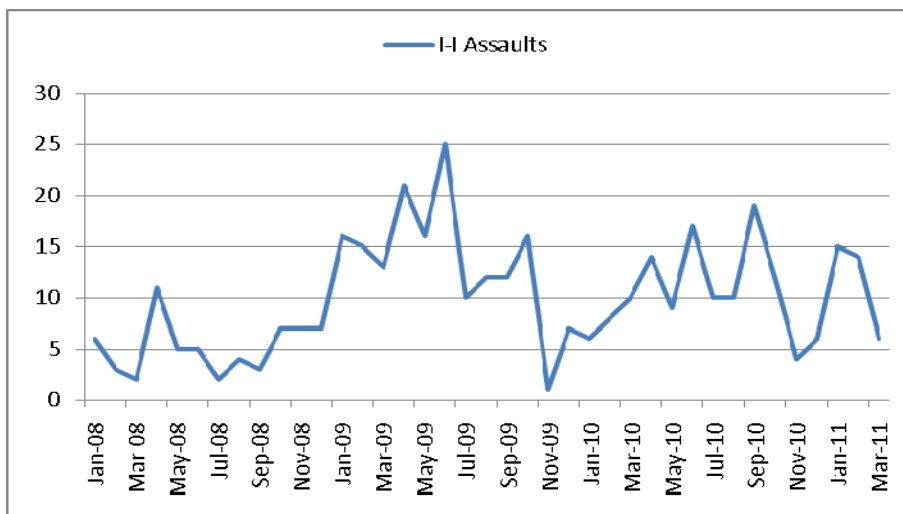


Figure 1. CDF Inmate on Inmate Assaults from January 2008 through March 1, 2011.

Inmate on Staff assaults are reported in Table 2 below.

Table 2. Inmate on Staff Assaults at the CDF from January 2008 through March 1, 2011

	2008	2009	2010	2011
JAN	5	19	6	3
FEB	10	3	7	5
MAR	11	8	11	9
APR	3	12	11	
MAY	16	12	17	
JUN	10	11	10	
JUL	11	13	13	
AUG	11	18	12	
SEP	19	15	8	
OCT	24	12	10	
NOV	14	4	4	
DEC	16	2	12	

Figure 2 depicts the data in graphical form; the lack of obvious trend is evident.

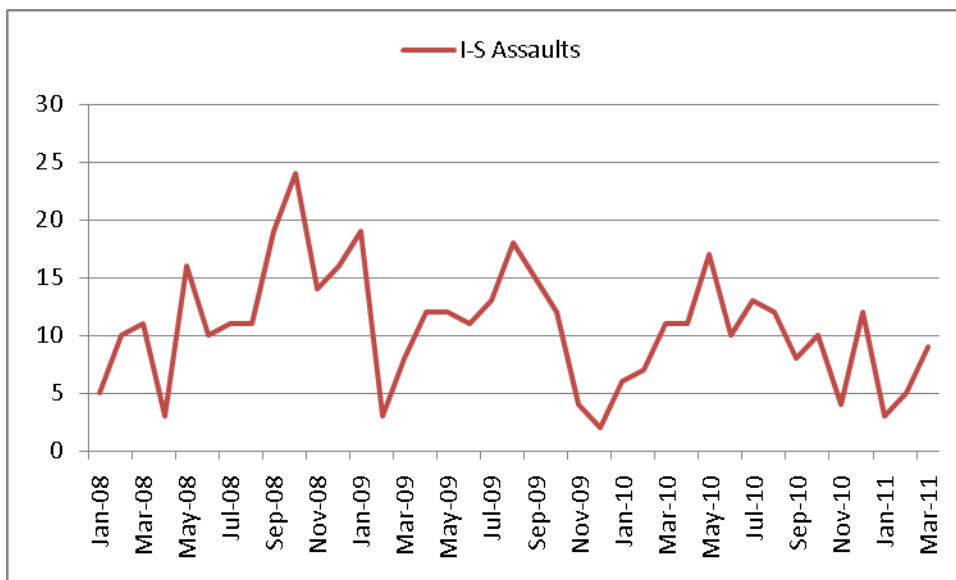


Figure 2. CDF Inmate on Staff Assaults from January 2008 through March 1, 2011.

5. Please describe, in detail, the services provided by the Employment Readiness Center within CDF. Include in your response statistics on the number of individuals currently enrolled in job readiness training and the number of individuals who have received a certificate of achievement through the program. How long does the program take and what are the size of the “graduating” cohorts? Explain.

Response:

The Employment Readiness Center (ERC), a program operated in partnership with the Department of Employment Services, has been operational since December of 2008. The mission of the program is to offer employability development services to inmates preparing for re-entry and the successful transition to gainful work activity. Services offered through the ERC include career guidance, life skills and job readiness training, interviewing skill development, resume preparation, introductory keyboarding and job placement assistance. Upon successful completion of the program, participants receive a certificate of achievement along with a referral for post release assistance through the Department of Employment Services. The bridge services offered to ensure full readiness for employment include enhanced life skills support, connection with required wraparound services, educational remediation, occupational skills training, pre-apprenticeship/apprenticeship training and individualized job placement assistance.

To date, we have completed 18 five-week class cycles with an average of 19 inmates successfully completing. Three hundred and thirty-eight (338) individuals have graduated from the program. The next class cycle will begin on March 7 and include a maximum of 30 inmates, all of whom are within 45 to 60 days of release.

A meeting was held recently with the Director of the D.C. Department of Employment Services regarding the agency’s plans to re-engineer programming for returning residents. In moving forward, there are plans to procure job placement and other employment related services through outside vendors experienced in working with ex-offenders and other hard to serve populations. As part of that process, after April 1, 2011 DOES will no longer operate the ERC. Effective Monday, April 4, 2011, DOC personnel will assume oversight and provide instruction using the DOES employment readiness training curriculum. Linkages with DOES programs and services will continue as part of the ERC post release planning process.

6. What are the vacant and unfunded needs in the records office? “Records office” includes classification, calculation of time, processing for intake and release, etc

Response:

The functions of “...classification, calculation of time, processing for intake and release, etc” are performed by the Records Office and the Case Management Unit.

a. Vacancies: The department is seeking to fill each of these positions.

Position Number	Title	Grade
<u>Records</u>		
00026139	Correctional Program Officer - Records	12
00025277	Lead Legal Instruments Examiner	9
00035698	Lead Legal Instruments Examiner	9
00042468	Legal Instruments Examiner	8
<u>Case Management</u>		
00013001	Correctional Program Specialist	12

At this time there are a total of forty-three (46) filled positions and four (4) vacancies in the Records Office and twenty-one (21) filled positions and one (1) vacancy in Case Management.

b. Unfunded Needs : DOC is re-evaluating all agency job functions and staffing requirements to assess and identify needs including in the areas of the Records Office and Case Management..

7. (a) What is the status of the courthouse release program? How and when will this be expanded?

(b) Please provide the following: (1) the number of courthouse releases, by month, that have occurred since the program was implemented, (2) a description of the staff and resources DOC has added or shifted to accommodate this program, and (3) the procedure for processing courthouse releases.

Response:

a. The court release program is operating efficiently; given fiscal constraints, there is no plan to further expand this program at this time.

b.

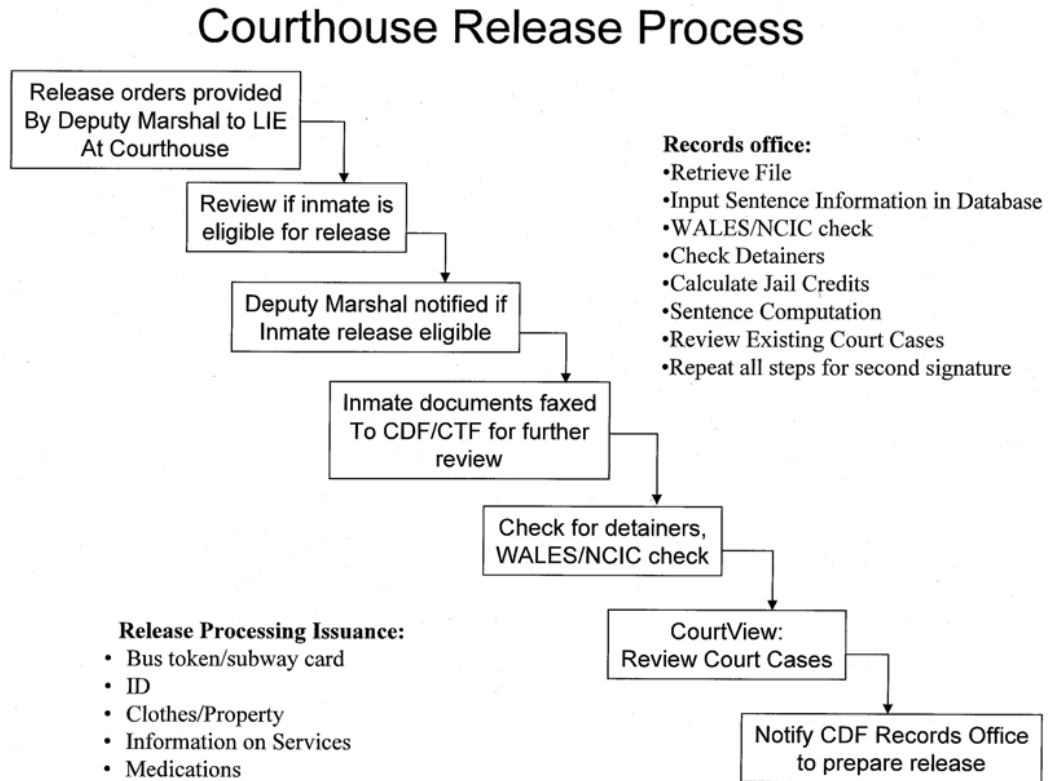
(1) There have been 3113 courthouse releases, 449 females and 2664 males since the program began in 2008. These are tabulated by month of release below.

YEAR	MONTH	FEMALES COURT ORDERED RELEASE - CDF	MALES COURT ORDERED RELEASE - COURT	TOTAL COURT ORDERED RELEASE - COURT
2008	7	22	86	108
	8	38	114	152
	9	23	65	88
	10	20	105	125
	11	9	76	85
	12	18	111	129
2008 Total		130	557	687
2009	1	10	106	116
	2	20	70	90
	3	8	89	97
	4	25	88	113
	5	7	71	78
	6	10	58	68
	7	13	94	107
	8	13	66	79

YEAR	MONTH	FEMALES COURT ORDERED RELEASE - CDF	MALES COURT ORDERED RELEASE - COURT	TOTAL COURT ORDERED RELEASE - COURT
	9	9	78	87
	10	16	94	110
	11	8	75	83
	12	12	74	86
2009 Total		151	963	1114
2010	1	8	67	75
	2	6	44	50
	3	12	87	99
	4	11	80	91
	5	9	90	99
	6	6	78	84
	7	14	78	92
	8	22	113	135
	9	16	102	118
	10	19	75	94
	11	15	75	90
	12	14	70	84
2010 Total		152	959	1111
2011	1	9	78	87
	2	7	107	114
2011 Total		16	185	201

(2) DOC has a total of two (2) staff members from the records office processing releases, a Supervisory Legal Instruments Examiner and a Lead Legal Instruments Examiner. In addition, there is one (1) officer from custody and security who distributes medication, and property and escorts inmates out of the cellblock.

(3) The procedure for processing court house releases is illustrated below:



8. Please explain what is happening with billing Corrections Corporation (CCA) of America for utilities, including steam. Is there still a dispute over metering and, if so, why? Has any money been paid by CCA for utilities and, if so, what? When will CCA start paying for current usage? For past usage? If you rely on another agency/agencies to provide this answer, who and for what part of this answer?

Response:

The Department of Real Estate Services (DRES) is responsible for the generation and invoicing of steam utilized by the Correctional Treatment Facility. This facility is operated by CCA. The most up to date and accurate information on the status of this account can best be obtained by contacting DRES directly.

9. What is the status of the Correctional Surveillance Center? Include in your response an update on the RFID project. If this project is still ongoing, provide an anticipated completion date. Also include in your answer an explanation of the costs.

Response:

The DC Department of Corrections Correctional Surveillance Center (CSC) is designed to operate twenty four hours per day, seven days per week. The CSC occupies roughly 1,500 sq. ft. of office space at the Central Detention Facility (CDF) on the 1st floor of the Administration building; and provides surveillance throughout much of the CDF. It currently has 230 internal cameras and 11 external cameras continuously monitoring 18 housing units, outside recreational yards and surrounding perimeter areas. An estimated 250 cameras will be added to the existing platform during FY 2011.

Current security infrastructure includes a state of the art inmate telephone system that continually generates actionable intelligence. The design of the CSC provides the capability to integrate future technologies and leverage intelligence from these technologies to pro-actively generate information and analysis of value. One of the primary objectives of the Corrections Surveillance Center (CSC) is to manage effectively the jail operations by continuously monitoring, analyzing and reporting inmate movements and activities, including outside telephonic conversations, thereby proactively preventing crimes from occurring.

DOC plans to implement Call IQ and Radio Frequency Identification based inmate and personnel tracking. DOC envisions such CSC surveillance technologies to be proactively leveraged and integrated with the current as well as futuristic technology in a state of the art manner. This will permit the extraction and sharing of criminal justice intelligence with appropriate law enforcement agencies to detect and prevent the planning and execution of criminal activity both within the facility and the community at large

The CSC opened in April 2008, with a full staffing compliment of 13. These positions included 1 manager, 3 data analysts, and 1 network engineer, and 5 full-time and 3 part-time monitoring specialists. The CSC is currently staffed with 6 funded positions which include, 1 network engineer and 5 monitoring specialists.

The Radio Frequency Identification (RFID) project, which was budgeted at \$3.3 million, is about 85 percent complete. However, the project has been put on hold because the vendor sold its RFID subsidiary and associated assets to another firm. Doing so without the District's approval is in violation of DC procurement law, and the Office of Contracting and Procurement (OCP) has initiated default of contract proceedings.

- 10.** Please provide the following with regard to the Inmate Processing Center:
- a. Current milestones for the Inmate Processing Center. If this is a full page, you may attach it. Include the date the list of milestones was prepared.
 - b. The status of design work being conducted by DMJM.
 - c. The status and projected costs of improvements to the staff and visitor's entrance, since DOC has identified that a reconfiguration of the staff and visitor's entrance is "closely linked with the Inmate Processing Center project." Do current estimates for the Inmate Processing Center include costs for this aspect of the project?
 - d. The plans for additional storage for inmate personal property (estimated need of 800 square feet) within the Inmate Processing Center. Is this funded?

Response:

10.a. Please refer to the attachment.

10.b. AECOM (DMJM's successor) has completed all drawings, including construction drawings. The drawings have been submitted to DRES.

10.c. The staff and visitor's entrance is a part of the new Inmate Processing Center (IPC) design and the current estimate includes this cost. Combining the two projects allowed for space and functional consolidation including considerable time saved on procurement and construction. The agency did not incur any additional costs on the staff and visitor's entrance project.

10.d. Inmate Processing Center (IPC) design includes adequate space (1,218 square feet) for storing inmate personal property and carrying out all functions associated with this process.

11. What additional inmate programs could be added at the CDF or CTF if funding were not an issue? Include in your answer an explanation of the program and its benefits.

Response: If funding were not an issue, the following programs could be added:

Job Readiness Programming for Female Offenders: The female offender population housed at the Correctional Treatment Facility would benefit greatly from a structured job readiness program designed to provide pre-release instruction focused on employability skills development. The program model would involve six weeks of individual and group activities supporting the development/refinement of soft skills required for successful employment. Ideally, the program would be staffed by two full time professional staff –a Workforce Development Trainer and Case Manager, who would facilitate sessions covering topics such as effective communication, team building, goal setting, workplace etiquette, conflict resolution, interviewing, resume preparation, and introductory keyboarding. Individualized vocational guidance and career counseling would also be offered program participants to determine post release services needed for employment (job placement assistance, occupational skills training, academic training, pre-apprenticeship/apprenticeship training, wraparound services, etc). Program staff would be required to have knowledge of and access to a range of community resources that support successful re-entry (including those offered by our LINC partners). This would encompass public sector services offered by agencies such as the Department of Employment Services, Office on Ex-Offender Affairs, and the Department of Human Services as well as community-based services offered by organizations such as Goodwill Industries and D.C. Central Kitchen. Graduates transitioning to the community would be referred for continued assistance as appropriate with ongoing follow-up provided by the program’s Case Manager.

Re-Entry Unit for Females: This unit would focus on transitional activities for the female population inclusive of life/job skills training, anger management, parenting, health and wellness, domestic violence, self- esteem and substance abuse education. This self contained unit would serve women within 120 days of release and provide focused intervention geared toward preparing them to successfully re-enter the community equipped with critical life and employment related skills.

Master Barbering Program for Males at CDF: Implementation of a barbering program leading to certification as a master barber would prove beneficial to a significant percentage of male inmates housed at the D.C. Jail—this certification would qualify graduates to provide hair services to both males and females. Upon re-entry into the community, those certified would better positioned to access employment opportunities and earn a livable wage.

Hospitality Industry Training Program: This program could be implemented at both the CDF and CTF to train inmates for jobs in the hospitality industry including desk clerks, customer service representatives, food service workers, housekeepers and maintenance workers. Because this is a growth industry, job prospects upon successful completion of training are good. Benefits include sustainability as well as decrease in recidivism.

Computer Literacy Classes: These classes would be implemented at both facilities in order to ensure that those returning to the community have basic computer skills—these skills are critical in the current market and will give program completers an advantage when applying for employment, competing for jobs and accessing information and resources.

Expanded Cosmetology Classes for Females: The cosmetology class currently operating at the CTF could be expanded to reach a greater number of students and to include a certification program for esthetics (skin care). This component of the industry is growing and will likely improve opportunities for gainful employment upon release.

Expanded Basic Adult Education: This component, which would be facilitated by a certified instructor, would target inmates over the age of 22 who do not possess basic reading, writing and math skills (those under 22 currently receive educational instruction). Educational remediation is a critical component of the Department's programming because of its direct impact on the long term self-sufficiency of the inmate population.

Music Education/ Appreciation for Juvenile Population: A music appreciation program would expose the juvenile population to various forms of music and teach them to play an assortment of instruments.

Entrepreneurship Programming: Entrepreneurship training for males and females would focus on issues critical to small business start-up including development of a business plan, funding options, financial literacy, grant and proposal writing and steps to follow in obtaining non-profit status. The training would serve to expand post release employment options for those successfully completing the program.

Data Entry Program for Females: Implementing a data entry program for females housed at the CTF would facilitate the development of a marketable job skill that would enhance post release employment options. The day to day work activities of the program would support the missions of District based public and private sector organizations requiring data entry in their business activities. This

type of win-win partnership is currently being implemented at the Maryland Department of Corrections' female facility.

12. In table format, please list each erroneous release, together with an explanation of the cause, in chronological order January 2007 to present. State the date of erroneous release, the date the individual was back in custody, and whether any personnel disciplinary action was taken.

Response: The information requested is provided as an attachment.

13. In table format, please list each case of over-detention in chronological order January 2007 to present. Include the same type of information requested in Question Number 12.

Response: The information requested is provided as an attachment.

- 14.** Please provide an accounting of all inmates released since March 31, 2010 between the hours of 10 p.m. and 7 a.m. For each inmate identified, please provide: 1) the name or inmate identification number, 2) the date and time of his/her release, and 3) the basis for his/her release (e.g., whether the release was due to court order issued earlier in the day, or due to completion of sentence). If the inmate was released due to a court order and the order was issued earlier in the day, please indicate what time the inmate and the release order arrived at the CDF for release processing. Additionally, please provide the mode of transportation the inmate was given (e.g., driven by a member of the DOC Transportation Unit, a taxi at the Department's expense, or pick-up by a friend or family member). If this list is longer than 25-30 names, please make it an attachment to your answers.

Response:

The record office begins to receive court ordered releases from the court house at approximately 11:00 - 11:30 a.m. for processing. The inmates are released from the court house until 5:00 p.m.; this cut-off time was established by the United States Marshal Services (USMS). When release orders are faxed to the record office after 5:00 p.m., inmates are transported to MHU and released from there no later than 10:00 p.m.

Information requested for the 738 releases to the community between the hours of 10:00 PM and 7:00 AM in the period March 31, 2010 through February 28, 2011 is provided as an attachment. Summary information for these releases is tabulated below.

Release Month, Time and Nature	OTHER		OTHER Total	SELF		SELF Total	Grand Total
	Female	Male		Female	Male		
March 2010							
1 am - 5 am							
CASH COLLATERAL					1	1	1
COURT ORDERED RELEASE - CDF					2	2	2
EXPIRATION					1	1	1
FUGITIVE WAIVER		3	3				3
MANDATORY REL-PAROLE					1	1	1
SANCTION					2	2	2
10 pm - Midnight							
CASH COLLATERAL					2	2	2
COURT ORDERED RELEASE - CDF		3	3		5	5	8
COURT ORDERED RELEASE - MHU					2	2	2
EXPIRATION	1		1	3	9	12	13
OTHER		2	2		2	2	4
PAROLE					1	1	1
5 am - 7 am							

Release Month, Time and Nature	OTHER		OTHER Total	SELF		SELF Total	Grand Total
	Female	Male		Female	Male		
COURT ORDERED RELEASE - CDF					1	1	1
EXPIRATION				8	8	16	16
SANCTION				8	1	9	9
WEEKENDER EXPIRATION				1	1	2	2
April 2010							
1 am - 5 am							
COURT ORDERED RELEASE - CDF					3	3	3
SANCTION					1	1	1
10 pm - Midnight							
CASH BOND					1	1	1
COURT ORDERED RELEASE - CDF		2	2	1	11	12	14
COURT ORDERED RELEASE - MHU				3	15	18	18
EXPIRATION				2	11	13	13
MANDATORY REL-PAROLE		1	1				1
PAROLE					2	2	2
TIME SERVED OR SUSPENDED					2	2	2
WEEKENDER EXPIRATION				1		1	1
5 am - 7 am							
EXPIRATION				9	13	22	22
SANCTION				3	9	12	12
WEEKENDER EXPIRATION					1	1	1
May 2010							
1 am - 5 am							
COURT ORDERED RELEASE - COURT					1	1	1
EXPIRATION					3	3	3
SANCTION					1	1	1
10 pm - Midnight							
CASH BOND					1	1	1
CASH COLLATERAL					2	2	2
COURT ORDERED RELEASE - CDF		2	2	2	11	13	15
COURT ORDERED RELEASE - MHU					1	1	1
EXPIRATION					11	11	11
OTHER					1	1	1
TIME SERVED OR SUSPENDED					1	1	1
WEEKENDER EXPIRATION					1	1	1
5 am - 7 am							
EXPIRATION				8	5	13	13

Release Month, Time and Nature	OTHER		OTHER Total	SELF		SELF Total	Grand Total
	Female	Male		Female	Male		
FUGITIVE WAIVER	1		1				1
SANCTION				14	5	19	19
WEEKENDER EXPIRATION					1	1	1
June 2010							
1 am - 5 am							
COURT ORDERED RELEASE - CDF					1	1	1
EXPIRATION					1	1	1
SANCTION					2	2	2
10 pm - Midnight							
CASH BOND					1	1	1
CASH COLLATERAL					2	2	2
COURT ORDERED RELEASE - CDF		2	2	2	6	8	10
COURT ORDERED RELEASE - MHU				3	17	20	20
EXPIRATION				6	15	21	21
OTHER					2	2	2
TIME SERVED OR SUSPENDED				1		1	1
5 am - 7 am							
COURT ORDERED RELEASE - CDF		1	1				1
EXPIRATION				4	22	26	26
SANCTION				7	10	17	17
July 2010							
1 am - 5 am							
EXPIRATION					1	1	1
10 pm - Midnight							
CASH BOND				1	4	5	5
CASH COLLATERAL				1	1	2	2
COURT ORDERED RELEASE - CDF					4	4	4
EXPIRATION				4	11	15	15
FUGITIVE WAIVER		1	1				1
PAROLE					1	1	1
TIME SERVED OR SUSPENDED					1	1	1
WEEKENDER EXPIRATION					1	1	1
5 am - 7 am							
EXPIRATION				14	5	19	19
PAROLE				1		1	1
SANCTION				1	12	13	13
WEEKENDER EXPIRATION					1	1	1

Release Month, Time and Nature	OTHER		OTHER Total	SELF		SELF Total	Grand Total
	Female	Male		Female	Male		
August 2010							
1 am - 5 am							
FUGITIVE WAIVER		1	1				1
WEEKENDER EXPIRATION					1	1	1
10 pm - Midnight							
CASH BOND					1	1	1
CASH COLLATERAL					1	1	1
COURT ORDERED RELEASE - CDF		2	2	1	3	4	6
COURT ORDERED RELEASE - MHU EXPIRATION				2	7	9	9
FUGITIVE WAIVER		2	2				2
OTHER				2		2	2
PAROLE					1	1	1
TIME SERVED OR SUSPENDED				1	1	2	2
5 am - 7 am							
EXPIRATION				9	25	34	34
FUGITIVE WAIVER		1	1				1
SANCTION				3	10	13	13
WEEKENDER EXPIRATION					1	1	1
September 2010							
1 am - 5 am							
SANCTION					2	2	2
10 pm - Midnight							
COURT ORDERED RELEASE - CDF EXPIRATION				3	3	6	6
FUGITIVE WAIVER		1	1	4	8	12	12
OTHER					1	1	1
WEEKENDER EXPIRATION					1	1	1
5 am - 7 am							
EXPIRATION		1	1	8	16	24	25
FUGITIVE WAIVER		1	1				1
SANCTION					17	17	17
October 2010							
1 am - 5 am							
OTHER		1	1				1
SANCTION				1	2	3	3
WEEKENDER EXPIRATION					1	1	1
10 pm - Midnight							

Release Month, Time and Nature	OTHER		OTHER Total	SELF		SELF Total	Grand Total
	Female	Male		Female	Male		
CASH BOND					4	4	4
CASH COLLATERAL		1	1				1
COURT ORDERED RELEASE - CDF		1	1	2	9	11	12
COURT ORDERED RELEASE - MHU					1	1	1
EXPIRATION				2	7	9	9
WEEKENDER EXPIRATION					1	1	1
5 am - 7 am							
EXPIRATION				8	8	16	16
FUGITIVE WAIVER		1	1				1
SANCTION				2	5	7	7
November 2010							
1 am - 5 am							
FUGITIVE WAIVER		1	1				1
10 pm - Midnight							
CASH BOND					3	3	3
COURT ORDERED RELEASE - CDF				1	5	6	6
EXPIRATION				2	8	10	10
OTHER					1	1	1
WEEKENDER EXPIRATION				1	1	2	2
5 am - 7 am							
EXPIRATION				8	9	17	17
FUGITIVE WAIVER		2	2				2
SANCTION				6	3	9	9
December 2010							
1 am - 5 am							
EXPIRATION					3	3	3
FUGITIVE WAIVER		1	1				1
10 pm - Midnight							
COURT ORDERED RELEASE - CDF				1	8	9	9
COURT ORDERED RELEASE - COURT					1	1	1
COURT ORDERED RELEASE - MHU					3	3	3
EXPIRATION				1	10	11	11
PAROLE					1	1	1
5 am - 7 am							
EXPIRATION				1	2	3	3
SANCTION				5	8	13	13
WEEKENDER EXPIRATION					1	1	1

Release Month, Time and Nature	OTHER		OTHER Total	SELF		SELF Total	Grand Total
	Female	Male		Female	Male		
January 2011							
1 am - 5 am							
FUGITIVE WAIVER		2	2				2
SANCTION					1	1	1
10 pm - Midnight							
COURT ORDERED RELEASE - CDF					1	1	1
EXPIRATION					4	4	4
WEEKENDER EXPIRATION					1	1	1
5 am - 7 am							
EXPIRATION				1	5	6	6
SANCTION					5	5	5
WEEKENDER EXPIRATION					2	2	2
February 2011							
1 am - 5 am							
COURT ORDERED RELEASE - COURT					1	1	1
WEEKENDER EXPIRATION					1	1	1
10 pm - Midnight							
EXPIRATION					3	3	3
5 am - 7 am							
EXPIRATION				2	1	3	3
SANCTION				2	6	8	8
WEEKENDER EXPIRATION				1	2	3	3
Grand Total	2	36	38	188	512	700	738

15. What is the status of the inmate healthcare contract? When do you anticipate having a new contract in place? What, approximately, will be the cost? Will the contract be fee-for-service or fixed-fee?

Response:

The bidder responses to the Comprehensive Inmate Healthcare Services Request for Proposals (RFP) are currently being reviewed and scored by the Evaluation Team under the authority of the Office of Contracting and Procurement (OCP). Upon conclusion of the Evaluation Team's review of the technical and price proposals, negotiations and Best and Final Offers (BAFO) will be conducted with each bidder. A final recommendation will be made and a package will be prepared by OCP for submission to Council for approval.

The award process could reasonably be anticipated to be concluded within the next 45 days subject to Council's schedule and review.

The cost of a new contract will be determined by the pending negotiation/BAFO process and the final dollar amount is unknown at this time.

The new contract will be based upon a fixed per diem rate calculated on the Average Daily Population (ADP) for each month (i.e., per inmate per day).

16. There are several offender relationships involving both federal agencies and desired reimbursements. These include: housing juvenile felons sentenced as adults, housing returning felons approximately 90 days prior to release, housing parolees pending final determination by the US Parole Commission, housing felons after conviction but prior to BOP designation, etc. Please explain, with a separate paragraph for each: the relationship, how much reimbursement is received (per diem and aggregated), what additional reimbursement the District seeks, and the current situation regarding this offender relationship.

Juvenile felons sentenced as adults:

DOC provides secure custody, housing, safekeeping, subsistence, and care for one or more BOP juveniles (under the age of 18) under the terms of this Agreement, subject to the availability of suitable space. The current rate is \$230.00 per inmate, per day for housing BOP juveniles at the DCDOC Juvenile Unit until the 18th birthday at which time the felon would be designated and moved to a federal facility as an adult. The estimated maximum number of BOP juveniles per day to be housed under this Agreement is ten (10). The estimated total value of this Agreement is not to exceed \$2,520,800.00.

During FY 2011 the average monthly reimbursements has been approximately \$70,000.00; average billable days per month are 305 days and the average number of juvenile felons housed per month is ten (10). The District seeks to modify this agreement in 2013 to increase the number of juvenile felons housed per day.

The number of juveniles sentenced as adults varies. Right now we have more sentenced juveniles than average. Historically we have averaged 3 sentenced juveniles a month. DOC proposes a conservative projection of \$500,000 for FY 2011 at this time.

Housing returning felons approximately 90 days prior to release:

There is no formal policy or agreement but a flow chart used to currently process these sentenced felons. Approximately 200 inmates on an average daily basis with less than 90 days left to serve are supposed to be designated by BOP to the DC Jail according to this document. If inmate has more than 90 days left to serve, then BOP designates the inmate to Rivers Correctional Institution. Currently, the per diem rate is \$106.62; and the average monthly bill and reimbursement is approximately \$46,566.28; average billable days per month are 1,747 days and the average number of felons designated to the DOC per month is fourteen (14). The vast majority of this population is not processed according to the existing document and serves their sentence undesignated at District taxpayer expense. The District seeks a written agreement addressing this population.

Housing parolees pending final determination by the US Parole Commission:

District of Columbia Superior Court Parole Violator (PV) related protocol changes could potentially yield additional revenue if they are adopted. The specific changes requested are to DCSC PVs from date of commitment to date of removal. Currently, DCSC PVs average 60 inmates a month each with 100 days in non-billable status. Based on the current billing rate of \$ 106.62 per inmate per day, the annual reimbursement revenue would be \$7.6 million for the DCSC PVs annually. Over a 5 year period this totals more than \$38 million even at the current reimbursement rate of \$106.62 which is lower than the cost to District taxpayers for incarceration (\$127.36 per inmate per day). It is expected that the billable PV population will shrink and eventually fade out, as it ages and dies. The District is one of the only jurisdictions with PVs since the Federal government abolished parole.

Housing felons after conviction but prior to BOP designation:

Sentence Felon (SF) related protocol changes could potentially yield additional revenue if they are adopted. The specific changes requested are to bill SFs from date of sentence to date of removal. Currently SFs average 22 non-billable days for approximately 200 inmates per month (based on Q1 FY 2011 data). At the current billing rate of \$ 106.62 per inmate per day, the annual reimbursement revenue would be \$5.6 million. Over a 5 year period this totals more than \$28 million even at the current reimbursement rate of \$106.62 which is lower than the cost to District taxpayers for incarceration (\$127.36 per inmate per day). It is believed that we can reasonably expect the SF on processing time line to shrink from 28 days to about 10 days as the process becomes more end-to-end electronic.

17. Broken down by program or purpose, what was the actual revenue collected from the US Marshalls in fiscal years 2009, 2010, and projected in 2010?

Response:

The FY 2009 Reimbursements by source (purpose) were as follows:

FY 2009: Total Reimbursements-	<u>\$23,240,239.53</u>
Immigration/Customs Enforcement-	\$ 6,024.72
United States District Court-	\$11,286,374.28
USMS Transportation Services	\$ 498,377.17
USMS Federal Parole Violators	\$ 2,971,642.20
USMS Superior Court Designated Felons	\$ 1,730,089.20
Superior Court Transportation Services	\$ 1,101,229.95
DCSC Superior Court Felony Probation Violators	\$ 804,128.04
FBOP Parole Violators	\$ 3,601,548.81
FBOP Sentenced Felons Designated To DOC	\$ 356,537.28
FBOP Federal Program Failures	\$ 671,934.23
US District Court District of Maryland	\$ 212,353.65

Reimbursements received in FY 2010 by program or purpose were as follows:

FY 2010: Total Reimbursements-	<u>\$21,756,054.73</u>
Immigration/Customs Enforcement-	\$ 15,992.70
United States District Court-	\$10,439,270.82
USMS Transportation Services	\$ 447,546.90
USMS Federal Parole Violators	\$ 1,939,808.01
USMS Superior Court Designated Felons	\$ 1,983,696.34
Superior Court Transportation Services	\$ 943,420.61
DCSC Superior Court Felony Probation Violators	\$ 1,428,388.14
FBOP Parole Violators	\$ 2,400,676.04
FBOP Sentenced Felons Designated To DOC	\$ 1,107,646.69
FBOP Federal Program Failures	\$ 759,364.60
US District Court District of Maryland	\$ 129,128.36
Bureau Of Prisons (Weekenders)	\$ 10,235.52
Sentenced Juveniles	\$ 150,880.00

The FY 2010 projected revenue was projected conservatively as \$17 to \$19 million based upon the Q1 FY 2010 decline in federal inmates housed. The reimbursement projection made in 2010 for FY 2011 was a conservative projection of between \$17,000,000 and \$19,000,000 based on reduction in average length of stay and the improved efficiency of federal inmate designation and transfer. Federal Revenue has been trending downward by an average of \$2 million every year since FY 2008.

As a conservative estimate the FY 2012 federal revenue projections inclusive of US District Court Commitments, USMS transport, Medical Transport and billing, Sentenced Designated Felon and Revoked PV housing is projected conservatively as \$15 million (in the range of \$14 million to \$16 million).

There are negotiations underway to request an increase in the per diem from \$106.62 to \$127.36 (the FY 2010 DOC cost per inmate per day). This would help maintain reimbursements at or near the FY 2010 levels despite reductions in the billable days due to lower numbers of inmates housed and processing time reductions. Reimbursements are conservatively projected in the range of \$15,000,000 to \$17,000,000.

18. What is the current relationship between DOC and the Department of Employment Services (DOES) regarding Project Empowerment? Is DOES still assisting the DOC with reentry efforts and accepting inmates in the Project Empowerment program? Explain.

Response:

A meeting was held recently with the Director of the D.C. Department of Employment Services regarding the agency's plans to re-engineer programming for returning residents. In moving forward, there are plans to procure job placement and other employment related services through outside vendors experienced in working with ex-offenders and other hard to serve populations. As part of that process, after April 1, 2011 DOES will no longer operate the D.C. Jail based Employment Readiness Center (ERC). This program, which offers inmates five weeks of life skills and employability development instruction, will now be operated by DOC personnel using the DOES employment readiness training curriculum. Linkages with DOES programs and services will continue as part of the ERC post release planning process.

DOC is also working in partnership with DOES to fully evaluate services offered transitioning inmates as part of our re-entry continuum. We are seeking ways to enhance our existing linkages with all programs and services offered by the Department including those available through the network of One-Stop Career Centers, Apprenticeship/Pre-Apprenticeship, Business Services, and the First Source Employment Program.

The Department has also worked in collaboration with DOES by providing work experience opportunities to eligible Project Empowerment participants--there have been 30 individuals referred by Project Empowerment who have gained valuable employment skills by working in various DOC administrative offices.

19. In FY 2010 DOC decided to no longer contract out maintenance. What are the cost-savings?

Response:

The cost savings resulting from the decision to bring facility maintenance in-house is approximately \$250,000. This figure does not take into consideration the \$1.5 million increase proposed by the contractor to continue services in FY 2010, which led to the decision to no longer contract out maintenance.

20. What is the current status of the cell door replacement project? How many cell doors are at issue (total, total to be replaced, total replaced as of March 1)? Is the project being done by in-house maintenance or is it being contracted out? What is the anticipated cost and completion date of the project? If it is in phases, please explain. How has the cell door problems affected staffing in the housing units?

Response:

As of March 1, 2011 three housing unit's cell doors have been replaced (South One, Southeast One and Southwest One). A total of two hundred forty (240) cell doors have been replaced. There are fifteen more housing units to complete.

There are a total of 1418 cell doors, 54 sallyport gates, 24 tier gates, 24 day rooms/office gates, 72 fire exit doors for a total of 1592 gates and doors.

This project is contracted out; the contractor is W.M. Schlosser, Company.

The anticipated date of completion of this project is June 12, 2012.

The anticipated cost of this project is \$19 million.

The cell door project, has not affected the staffing of the housing units.

21. Starting in March 2011, DOC all visitors to the D.C. jail will have their fingerprints scanned and checked against law enforcement databases for outstanding warrants. What will DOC do with the fingerprints after the warrant checks are run? Will the fingerprints be stored in any way? For what purpose and for how long? As an attachment, please provide a copy of DOC's policies regarding this new procedure.

Response:

The proposed system for checking fingerprints of D.C. Jail visitors to determine if they have outstanding arrest warrants will not be implemented in March 2011. DOC is re-evaluating this proposal because of a host of legal, financial and operational concerns that have been raised. Under the original proposal, there was never any intent to store visitor fingerprints. After completing a check, the transaction would be deleted.

22. Please break down the March 1, 2011 CDF population into all of its components – e.g., sentenced misdemeanants, pretrial detention, etc. Include in the breakdown the number of inmates being held for ICE (U.S. Immigration and Custom Enforcement).

Response:

The inmate population for the March 1, 2011 CDF population into its components – i.e., sentenced misdemeanants, pretrial detention, inmates being held for ICE (U.S. Immigration and Custom Enforcement) was as follows:

Total CDF count March 1, 2011: **2,063**

<u>Summary of Classification Status Included in Total</u>			
Pre-Trial Felons	785		
Convicted N/S Felons	19	YRA Inmates	
Sentenced Felons w/Open Charges	40	Inmates with Detainers	
Sentenced Felons	252	ICE Detainers	65
Pre-Trial Misdemeanants	153		
Convicted N/S Misdemeanants	2	Juveniles	36
Sentenced Misdemeanants w/Open Charges	51		
Sentenced Misdemeanants	271		
Parole Violators	347		
InTransits	22		
Writs	89		
(Status Not Determined)	32		
TOTAL	2063		

23. In calendar year 2010 (or FY 2010 if easier), what was the average population of inmates being held by DOC or ICE detainees (please explain if this is daily, monthly, or annual average)? What was the total number of inmates held on an ICE detainer? What was the average length of time an inmate was held on an ICE detainer?

Response:

In calendar year 2010 the average monthly population of ICE detainees was 88 inmates. A total of 185 inmates were held in CY 2010 on an ICE detainer for an average of 288 days. The monthly unduplicated inmates with ICE detainers are tabulated below:

1/2010	103
2/2010	98
3/2010	93
4/2010	88
5/2010	85
6/2010	88
7/2010	89
8/2010	89
9/2010	82
10/2010	83
11/2010	87
12/2010	71
Total	185

Of the 185 inmates on ICE detainers, only 10 of these were released to the custody of ICE; 32 were released to self custody; 78 were released to the USMS and one was released on a fugitive waiver. The remaining 61 inmates are still in custody. Where inmates were released their average length of stay on an ICE detainer was 286 days (not their DOC average LOS); where inmates are still in custody they have been on ICE detainers for an average of 304 days.

DOC reports suspected illegal aliens to ICE; ICE places detainees on those they are interested in detaining/processing once their legal status is confirmed. Currently the District does not bill ICE for housing detainees. ICE places detainees on inmates they wish to take into custody and removes them within 72 hours of release as is required by law. Therefore we do not get paid by ICE for housing them. The District does work with a contractor to identify those undocumented criminal aliens who meet the criteria for funding under the Federal SCAAP (State Criminal Alien Assistance Program) grants administered by the US Department of Justice. This grant also requires the District to provide information on correctional officer (CO) salaries and total inmate-days of housing for the specified grant period. Based on the federal funding, total inmate days, number of inmates housed, number of COs etc., the US DOJ makes awards to jurisdictions. Last year the District SCAAP grant award was slightly more than \$426,000.

24. Please explain what policy, if any, the DOC has for holding inmates on ICE detainees. If the policy is written summarize it here and attach the full policy. Does ICE reimburse the District for housing?

Response:

The Department of Corrections houses inmates who are released by court order or expiration of sentence, but who cannot be released to the community because they have a detainer lodged against them by ICE due to suspected illegal immigration status. The DOC holds these individuals initially as required under 8 C.F.R. 287.7(d) and, if they are to be housed for longer than forty-eight (48) hours, in accordance with an Intergovernmental Agreement between the DOC and the United States Marshals Service. The DOC does not have an internal policy related to holding inmates on ICE detainees.

The Code of Federal Regulations requires that the Department of Corrections hold inmates with ICE detainees, who are otherwise free to be released, for 48 hours in order to permit ICE the opportunity to assume custody of the inmate. The law states in the pertinent part:

§ 287.7 Detainer provisions under section 287(d)(3) of the Act.

Detainers in general. Detainers are issued pursuant to sections 236 and 287 of the Act and this chapter 1. Any authorized immigration officer may at any time issue a Form I-247, Immigration Detainer-Notice of Action, to any other Federal, State, or local law enforcement agency. A detainer serves to advise another law enforcement agency that the Department seeks custody of an alien presently in the custody of that agency, for the purpose of arresting and removing the alien. The detainer is a request that such agency advise the Department, prior to release of the alien, in order for the Department to arrange to assume custody, in situations when gaining immediate physical custody is either impracticable or impossible.....

(d) Temporary detention at Department request. Upon a determination by the Department to issue a detainer for an alien not otherwise detained by a criminal justice agency, such agency shall maintain custody of the alien for a period not to exceed 48 hours, excluding Saturdays, Sundays, and holidays in order to permit assumption of custody by the Department.

ICE may leave an inmate in the D.C. Jail past the 48 hour period outlined in the Code of Federal Regulations, and pay a per diem for the holding of the inmate pursuant to an Intergovernmental Agreement between the United States Marshals Service and the Department of Corrections. The agreement allows the federal government, including ICE, to house federal detainees at the D.C. Jail. Under the agreement, federal detainees are defined as “individuals sentenced or charged with federal offenses and detained while awaiting trial or sentencing awaiting designation and transport to a BOP facility, a hearing on their immigration status, or deportation.”

25. How has the DOC and U.S. Parole Commission reduced the parolee population at the jail? What more can be done to reduce it further? Please explain in detail?

Response:

Twice a month DOC (Case Management Services) submits to the US Parole Commissioner and the USMS-District Court a report that reflects all Parole Violators in custody who are awaiting Parole Hearings and separately lists Parole Violators with revoked parole awaiting designation prior to removal. These reports provide the US Parole Commission with parolees who may have been omitted from their dockets; parolees with probable cause hearings but no revocation hearing; and currently incarcerated parolees with new criminal charges/convictions. Thus, the USPC can schedule revocation hearings for inmates who may have escaped their radar and assist in designating eligible inmates to the BOP. Case Management Services engages in correspondence with the USPC and USMS on a continuous basis to ensure transfers of parolees eligible for Federal Removal. The parole violator count has fluctuated from month to month each year, but has leveled off within the last few months. From December, 2009 to December, 2010 there were approximately 400 to 499 parolees, it stabilized in mid-2010 and began to increase; today there are approximately 530 inmates charged as parole violators housed at DOC.

Processing volumes and timelines (lengths of stay, LOS) for inmates in the recent past show that both the number of parole violators housed and the processing timeline has decreased.

	Inmates with revoked parole	Average LOS to Revocation
PV 2011	60	87.72
PV 2010	68	96.6

2011	Inmates without final hearing	Minimum LOS	Maximum LOS	Average. LOS
PV housed greater than 90 days	208	91	711	189
PV housed 90 days or less	228	0	90	44
2010				
PV housed greater than 90 days	215	92	626	179
PV housed 90 days or less	221	2	90	47

By submitting reports on a more frequent weekly basis and increasing collaboration with the USPC and USMS, it may be possible to further improve the rate of processing for parole violators.

During Calendar Year 2010, approximately 300 clients were successfully diverted from further incarceration under the U.S. Parole Commission (USPC)/DOC Inmate Population Management Reduction Initiative (IPMRI). Under this diversion and population management program, inmates who meet certain criteria are referred to complete 90 days in the DOC Residential Substance Abuse Treatment (RSAT) program. Upon completion of 90 days treatment in a modified therapeutic environment, clients are transferred bed-to-bed into an approved Community-Based Aftercare Treatment program for up to 6 months. Those who complete 90 days in RSAT are guaranteed release, and their revocation hearings are placed in abeyance. Ordinarily, these clients would have gone through a revocation hearing, and spent approximately 1 year or more in jail for one (or more) parole violations.

The DOC and USPC would be willing and able to increase the number of clients who would benefit from this initiative, if additional clinicians are hired to complement the current staffing. APRA regulations require a ratio of one clinician to 15 clients. By raising the complement of clinical staff, the DOC and USPC will be able to increase significantly the number of clients that are released under this initiative. Rather than spending a total of their sentence in Jail, they spend the majority of their sentence in an Aftercare Treatment Program.

The DOC is also currently experimenting in using this diversion initiative with Judges in the Superior Court. By March 11, 2011, two pretrial defendants will be ordered a reduced sentence, followed by bed-to-bed release into a Community-Based Aftercare Program approved by DOC-RSAT.

26. In 2006, the Council adopted legislation establishing an Inmate Welfare Fund (D.C. Official Code § 24-281 *et seq.*)
- Please provide in table format the beginning and ending balances, total revenues, and total expenditures for this fund for fiscal years 2007 – 2011.
 - Please provide copies of the annual audits for each fiscal year since inception.
 - How often has the Inmate Welfare Fund Committee met in 2009, 2010, and 2011?
 - Has the Inmate Welfare Fun Committee promulgated any regulations governing the use and expenditures of the Fund? If yes, explain her and attach the regulations.
 - Are there any legislative changes that ought to be made regarding the fund? Any appropriation to supplement the Fund’s revenues? Explain.

Response:

- The beginning and ending balances, total revenues, and total expenditures for the Inmate Welfare Fund for fiscal years 2007 – 2011 are provided in tabular form below:

	2007	2008	2009	2010	2011
Beginning Balance	-	-	\$281,656	\$448,319	\$406,330
Revenues	-	\$281,656	\$209,080	-	-
Expenditures	-	-	(\$42,417)	(\$41,989)	(\$13,267)
Ending Balance	-	\$281,656	\$448,319	\$406,330	\$393,063

- Annual audits are not available. – To date the fund has not been audited.
- The committee did not meet during FY 2009 or FY 2010. The committee has met quarterly during FY 2011 with the first meeting held on November 23, 2010, and the second February 1, 2011.
- The Inmate Welfare Fund Committee has not to date promulgated any regulations governing the use and expenditures of the Fund.
- At this time no legislative changes regarding the fund are proposed. Appropriations to supplement the Fund’s revenues are not requested at this time.

Attachment to DOC Response to Q4 c.

Alleged Staff on Inmate Assaults

Calendar Year	Alleged Staff on Inmate Assaults
2008	9
2009	5
2010	8
2011	1

Attachment

Response to question 10.a. of document dated January 31, 2010.

**Current Milestones for Inmate Processing Center
Project**

**Dated
Prepared: 28-Feb-11**

No.	Milestone Description	Target Date	Actual Date	Remarks
1	Revised Schematic Design approved by DC DOC.		1-Apr-10	
2	Construction drawings submitted to DCRA and DDOE.		19-May-10	
3	All comments and items from DCRA incorporated into the documents.		19-Dec-10	
4	More comments from DCRA. DDOE ready for sign off.		8-Feb-11	
5	DCRA sign-off and completion of the permitting process.	1-Mar-11		
6	Procurement review and processing including OCP and OAG review.	1-Jun-11		Assuming 3 months.
7	Bidding phase including solicitation, bids evaluation and Council review.	1-Oct-11		
8	Contract negotiations and award.	1-Jan-12		Assuming 3 months.
9	Construction start and NTP.	1-Feb-12		
10	Construction complete.	1-Aug-13		18 months duration.
11	Inspection and close-out.	1-Sep-13		
12	Handover to DC DOC operations.	1-Sep-13		

Key:

- DOC Department of Corrections
- DCRA Department of Consumer and Regulatory Affairs
- DDOE District Department of the Environment
- NTP Notice To Proceed

12. ISSUE

In table format, please each erroneous release, together with an explanation of the cause, in chronological order January 2007 to present. State the date of erroneous release, the date the individual was back in custody, and whether any personnel disciplinary action was taken.

RESPONSE

Erroneous Release Date	DCDC#	Inmate's Name	Reasons for Erroneously Released	Date Inmate Return to Custody	Disciplinary Action
26-Jan-07	[REDACTED]	[REDACTED]	Inmate [REDACTED] was released to RAP Inc. treatment program via CSOSA on January 26, 2007. Staff failed to note that inmate had been sentenced to 6 months, and that neither jail credit form nor sentence computation had been prepared. On January 30, 2007 while staff was processing jail credit forms for sentenced felons to US Marshals it was discovered that the jail credit for inmate [REDACTED] was not computed. It was discovered that inmate [REDACTED] should have remained in custody until February 24, 2007 prior to being released into a treatment program.	31-Jan-07	No Information Recorded in File
4-Feb-07	[REDACTED]	[REDACTED]	Inmate [REDACTED] was erroneously released on February 4, 2007. On January 29, 2007 a detainer was received from Prince Georges County requesting that inmate [REDACTED] be returned to P.G. County for the offense of Armed Robbery. On February 2, 2007 inmate [REDACTED] was court ordered released in 2 of his 4 cases he was being detained on however, he also had sanctions that he was serving and those sentenced was to expire on February 4, 2007. He was released to self instead of P.G. County Sheriffs.	8-Mar-07	Corrective Action

<p>21-Mar-07</p>	<p>[REDACTED]</p>	<p>Inmate [REDACTED] was erroneously released on March 21, 2007 at approximately 12:00 p.m., from the custody of the USMS in D.C. Superior Court. Deputy Clark at the lock up desk at D.C. Superior Court and he confirmed that Inmate [REDACTED] had been erroneously released from the Superior Court cell block on Saturday, March 17, 2007. Mr. Clark stated that Inmate [REDACTED] came to the cell block from C-10 (arraignment), had on a blue jumpsuit, was released in the case that he was booked on and was released from the cell block. Mr. Clark went on to say that he made notification to his chain of command in the court and that they were seeking the return of custody of Inmate [REDACTED]. USM erroneously released from court.</p>	<p>22-Mar-07</p>	<p>Staff Not Culpable</p>
<p>28-Mar-07</p>	<p>[REDACTED]</p>	<p>Inmate [REDACTED] was erroneously released on March 28, 2007 at approximately 8:25 p.m., On March 27, 2007, this office received the Court Sheet from the Quality Assurance Branch of Superior Court for the inmates to appear in court on March 28, 2007. Inmate [REDACTED] number 68 on the court sheet for criminal case# [REDACTED] to appear before Judge Elizabeth Wing. On March 28, 2007, the record office received a Court Ordered Release for case# [REDACTED] a release was prepared and forwarded to the medical holding unit (MHU) so inmate [REDACTED] would be subsequently released. Inmate [REDACTED] was release from MHU at approximately 6:26 p.m. Staff reviewed the Courtview printout in case# [REDACTED] and it was showing as a closed case. This was the same courtview print out that was printed during the release process which indicated that case# [REDACTED] showed as closed. Court document not timely received after the release was processed.</p>	<p>10-Apr-07</p>	<p>Staff Not Culpable</p>

<p>11-Apr-07</p>	<p>[REDACTED]</p>	<p>Inmate [REDACTED] was erroneously released on April 11, 2007 from custody upon completion of serving a 180 days sentence. However, on April 30, 2007, it was discovered that [REDACTED] should have remained in custody pursuant to a subsequent J&C in another matter which ordered him to serve a 180 day consecutive sentence. The consecutive sentence information was noted on the J&C. However, the computation examiner did not take action to research the information in court view; therefore the consecutive sentence was not computed nor served.</p>	<p>1-May-07</p> <p>Staff Resigned</p>
<p>7-Apr-07</p>	<p>[REDACTED]</p>	<p>Inmate [REDACTED] was committed to the D.C. Department of Corrections on April 7, 2007 in criminal case# [REDACTED] charged with Armed Robbery. Inmate [REDACTED] appeared in D.C. Superior Court on April 13, 2007 and was ordered to be released in criminal case# [REDACTED] HWOB in [REDACTED]. Also indicated on the release order were the words "DEF. IS [REDACTED]". However, it appears that the commitment document in criminal case# [REDACTED] did not accompany his return from court on April 13, 2007. The court indicating detaining information in another case on the release order was not their normal practice. It is the normal practice of the court to forward a commitment document in a case that an inmate is to be detained. No commitment sent by the court in the HWOB case.</p>	<p>24-Apr-07</p> <p>Staff Not Culpable</p>

11-Apr-07	[REDACTED]	<p>On January 4, 2007, inmate [REDACTED] was committed to D.C. Jail pursuant to orders in case# [REDACTED] (Contempt). On January 11, 2007, inmate [REDACTED] went to court and was released from the contempt charge case # [REDACTED] however, a subsequent order was issued to detain inmate in case# [REDACTED] (Attempted Possession of Marijuana). On January 29, 2007 inmate [REDACTED] was transferred to CTF and on April 10, 2007 inmate [REDACTED] went to court from CTF and was ordered release in case# [REDACTED] and was sentenced to serve 6 (six) months in case# [REDACTED]. However, the sentencing order in case# [REDACTED] accompany inmate to CTF during his return from court. Instead, the order was sent to the D.C. jail and time/date stamped into the Records Office on April 10, 2007, at 7:55p.m. The sentencing order was not posted/data entered into JACCS computer, but was enveloped and forwarded to CTF. On April 11, 2007 CTF sent inmate [REDACTED] over to D.C. Jail to be released pursuant to release order in case# [REDACTED]. Staff prepared inmate [REDACTED] for release, had no knowledge of the sentencing order. As such, inmate [REDACTED] release documents were processed. (Paperwork cross-up).</p>	23-Apr-07	
1-May-07	[REDACTED]	<p>[REDACTED] was erroneously released from court on May 1, 2007. Here are the facts as I know them to be [REDACTED] was brought to D.C. Jail on writ from MRDCC on December 12, 2006 to be prosecuted for armed carjacking in case# [REDACTED] before Judge Cushenberry. In case# [REDACTED] he was being HWOB. On May 1, 2007 at approximately 7:30 a.m., he was removed by an MPD detective from the jail on a temporary custody and we have signed paperwork to that effect that says MPD is to return this prisoner to the jail because he's being held without bond and booked him in a new case. On May 1, 2007 [REDACTED] came through C10 as lock-up number 55 for case# [REDACTED] (robbery) and at 6:15 pm was placed on PR. He was released from court.</p>	11-May-07	Staff Not Culpable

22-May-07		<p>On Tuesday, May 22, 2007, inmate [REDACTED] appeared in D.C. Superior Court in criminal case no. [REDACTED] and was court ordered released by Honorable Zinora Mitchell-Rankin. The court sheet reflected that inmate [REDACTED] had only one case which he was to be seen on. The Record Office received a faxed copy of the court ordered release in the same case that inmate [REDACTED] went to court on [REDACTED] and was time stamped at 2:41 p.m. Inmate [REDACTED] returned from court at 5:07 p.m., at which time an Authorization for Release was generated at approximately 5:28 p.m., for released from MHU. At 6:42 p.m., the Records Office received the original court ordered release in criminal case no. [REDACTED] that was faxed at 2:41 p.m. also a Judgment & Commitment for criminal case no. [REDACTED] charged with Possession of a Prohibited Weapon to serve a sentence of (140) days. D.C. Superior Court failed to notify this office via the court sheet that inmate [REDACTED] was to be in court on May 22, 2007 in reference to this probation case [REDACTED] which he was not being detained on. (No knowledge of his probation case.)</p>	21-Sep-07	Staff Not Culpable
21-Jul-07		<p>Inmate [REDACTED] was erroneously release on July 21, 2007 due to staff failure to compute inmate [REDACTED] forty five (45) day sentence with the correct effective date of June 11, 2007, instead using June 8, 2007 as the effective date, thus causing inmate [REDACTED] to be released from custody three (3) days early on July 18, 2007.</p>	20-Jul-07	Corrective Action/SWOP

<p>30-Jul-07</p>	<p>[REDACTED]</p>	<p>Inmate [REDACTED] was committed to the D.C. Department of Corrections on November 28, 2006 on a Writ of Habeas Corpus Ad Prosequendum order to be present for an arraignment on December 4, 2006, in criminal case no. [REDACTED]. On January 18, 2007, he returned to D.C. Superior Court in criminal case no. [REDACTED] and returned with a commitment pending disposition charged with Theft 1, Uttering, Armed Burglary 1, and Attempt Theft Second Degree held without bond. It was further ordered that Inmate [REDACTED] was to be held at the mental health unit for thirty days. On February 16, 2007, he appeared back in D.C. Superior Court in criminal case no. [REDACTED] and was ordered to be released from custody and transferred into the custody of St. Elizabeth's Hospital. On April 19, 2007, staff in the Records Office entered data in JACCS' charge screen (in the Offense Notes Information) on inmate [REDACTED] discharging the WRIT using a discharged date of February 19, 2007, and data entered "DID NOT RETURN FROM COURT." When staff looked in JACCS it was discovered that the inmate's record activities appeared to have him removed from D.C. Department of Corrections with an open case, the writ, and an annotation that read "did not return from court" on February 19, 2007, and that the detention record was released on April 24, 2007. Upon further review, it was discovered that inmate [REDACTED] original detaining records was released and he was re-admitted to the facility as a new inmate and because of that error inmate [REDACTED] was released erroneously on July 30, 2007, from the D.C. Department of Corrections.</p>	<p>9-Aug-07</p> <p>Corrective Action/SWOP</p>
------------------	-------------------	--	---

<p>26-Oct-07</p>	<p>[REDACTED]</p>	<p>Inmate [REDACTED] was committed to the D.C. Department of Corrections on October 23, 2007 in criminal case no. [REDACTED] charged with Bail Reform Act held without Bond. On October 26, 2007, inmate [REDACTED] appeared in D.C. Superior Court in criminal case no. [REDACTED] and was court ordered released by Judge Karen Howze. On October 26, 2007, at approximately 10:31 a.m., the Records Office received a fax copy of the release order for criminal case no. [REDACTED] and staff initiated the release process. Staff reviewed CourtView printout which was generated at 11:45 a.m., and in the "Criminal Case Summary Screen" it indicated that criminal case no. [REDACTED] as being "open" and reflected a "Release Status" as personal recognizance. Also in the Court View "Docket List Screen" it indicated inmate [REDACTED] being on personal recognizance with a status hearing occurring on October 26, 2007. In addition to CourtView, staff reviewed WALES and NCIC at 11:27 a.m., and that result returned with a negative for outstanding warrants. Furthermore, a review of the Prisoner Transfer Report (PTR/Court sheet) reflected that inmate [REDACTED] was scheduled for an appearance in criminal case no. [REDACTED] the only case he was being detained on. There was no other case added on the PTR for inmate [REDACTED] to appear in therefore, the release process continued. The process was completed by Legal Instruments Examiner [REDACTED] and Supervisory Legal Instruments Examiner [REDACTED] at approximately 11:56 a.m., at which time the electronic release document was made available to the Medical Holding Unit (MHU) staff to effectuate the release.</p>	<p>29-Oct-07</p>	<p>Staff Not Culpable</p>
------------------	-------------------	---	------------------	---------------------------

8-Nov-07		<p>Inmate [REDACTED] was committed to the D.C. Department of corrections on November 1, 2007 in criminal case no. [REDACTED]. [REDACTED] charged with Contempt and held without bond. On November 8, 2007 inmate [REDACTED] appeared in D.C. Superior Court in criminal case no. [REDACTED]. The only case he was detained on. On November 8, 2007 at approximately 1:43 p.m., the Records Office received a faxed copy of the release order for criminal case no. [REDACTED] issued by Judge Wingo. The release authorization was processed and completed at 3:29 p.m., and at approximately 6:52 p.m., inmate [REDACTED] was released from custody. All procedures check and balances were completed before releasing inmate [REDACTED] from custody. At 7:51 p.m. in the last load of envelope, a commitment order was received in criminal case no. [REDACTED] charged with Contempt, the same case number that the Records Office received a court ordered release on earlier in the day. This commitment was signed by a different Judge ordering that inmate to be held on \$250.00 cash bond. The commitment did not accompany inmate [REDACTED] return from court.</p>	11/09/07 Inmate returned to court and Judge dismissed the case	Staff Not Culpable
14-Nov-07		<p>Staff reviewed inmate [REDACTED] institutional file to process for release it appears that staff reviewed an out dated FBOP sentry computation for a prior sentence in the felony criminal case no. [REDACTED] that was faxed to the Records Office on April 9, 2007. The sentry computation showed the original 24 month sentence which was issued on March 16, 2007 in which 18 months was suspended and 6 months was imposed to serve. This sentence term expired on May 9, 2007 thus had no further bearing on the current sentence imposed in criminal case no. [REDACTED] on August 20, 2007.</p>	21-Nov-07	Corrective Action/SWOP

4-Dec-07	[REDACTED]	<p>On December 4, 2007 inmate [REDACTED] appeared in United States District Court for the District of Columbia and received an order for release of defendant in criminal case no. [REDACTED]. On the same date, this release was faxed to the records office from USMS cellblock at 11:31 a.m. and date/time stamped December 4, 2007 at 12:17 p.m. Furthermore, on top of the release order was hand written and read "HALFWAY HOUSE RELEASE, Defendant to be released on the morning of Wednesday, December 5, 2007."</p>	Has not returned	Corrective Action/SWOP
7-Dec-07	[REDACTED]	<p>On November 16, 2007, inmate [REDACTED] was committed into the D.C. Jail in criminal case [REDACTED] sentenced to serve 30 days. A sentence computation was prepared which reflected a release date of December 6, 2007. On December 5, 2007, inmate [REDACTED] was processed to be released on his sentence expiration date of December 6, 2007. Since NCIC revealed that inmate was wanted in Maryland, staff processed him to be released to MPD Fugitive Unit on December 6, 2007. The release was entered into the electronic data base (lotus notes). On December 5, 2007, inmate [REDACTED] also was scheduled for court appearance in case [REDACTED]. As such, inmate went to court and returned with a J&C sentencing inmate to 130 days. Staff cancelled the release in the queue which was previously entered in the electronic data base. The sentencing information was data entered into JACCS, and a sentence computation was prepared reflecting a new expiration release date of April 12, 2008. On December 6, 2007, during the early a.m. hours, the midnight shift R&D staff was still able to view the cancelled release in the electronic data base (lotus notes) and printed it out to bring about the release to MPD. R&D staff called the records office and requested staff to close the cases in JACCS to enable R&D to process the release, in which they did. Then after, inmate was released to MPD.</p>		System Error

Erroneous Release Date	DCDC#	Inmate's Name	Reasons for Erroneously Released	Date Inmate Return to Custody	Disciplinary Action
22-Feb-08	[REDACTED]	[REDACTED]	<p>Inmate [REDACTED] was released to RAP Inc. treatment program via CSOSA on January 26, 2007. Staff failed to note that inmate had been sentenced to 6 months, and that neither jail credit form nor sentence computation had been prepared. On January 30, 2007 while staff was processing jail credit forms for sentenced felons to US Marshals it was discovered that the jail credit for inmate [REDACTED] was not computed. It was discovered that inmate [REDACTED] should have remained in custody until February 24, 2007 prior to being released into a treatment program.</p>	27-Feb-08	Counseled
9-Apr-08	[REDACTED]	[REDACTED]	<p>Inmate [REDACTED] was erroneously released on April 9, 2008. On April 8, 2008 records office staff processed inmate to be released from custody upon expiration of 270 days misdemeanor sentence on 4/9/07. Inmate should have remained in custody to serve a 12 month felon sentence. The Judgment and Commitment for the 12 month sentence was inside inmate's institutional file. The sentencing information was posted in JACCS and staff overlooked the document causing inmate to be released in error on April 9, 2008.</p>	14-Apr-08	Corrective Action/SWOP

30-Apr-08	[REDACTED]	[REDACTED]	<p>Inmate [REDACTED] was committed to the D.C. Department of Corrections on April 23, 2008 as a program failure for violation of a community program and to be held pending federal designation. On April 23, 2008 records office received a faxed request regarding inmate [REDACTED] be transferred from Hope Village to D.C. Jail due to his violating the conditions of his parole. Releasing documents were faxed to records office on April 30, 2008 with a release date of May 30, 2008 for inmate [REDACTED]. However, on April 30, 2008 inmate was processed and released on that date erroneously. Inmate was remanded to the D.C. Department of Corrections on May 15, 2008 via warrant squad.</p>	15-May-08	Counseled
24-Jul-08	[REDACTED]	[REDACTED]	<p>Inmate [REDACTED] was erroneously released on July 24, 2008, to self custody. Inmate [REDACTED] was in service of his sentenced in criminal case [REDACTED] to serve a period of 180 days. A sentence computation was computed and staff arrived at a projected release date of July 24, 2008. On July 24, 2008, staff processed inmate [REDACTED] for released, reviewed the file and there was no indication on face sheet one that inmate [REDACTED] had a Youth Rehabilitation Act Study Commitment under criminal case [REDACTED]. At the time of processing there were no indication that inmate had another commitment in his file. It was not posted in JACCS, or scanned in Paperclips. Because of the Youth Rehabilitation Act Study Commitment inmate should have remained in custody.</p>	3-Sep-08	No Staff Cited, however counseled

6-Nov-08			<p>Inmate [REDACTED] was erroneously released on November 6, 2008 to self custody. Inmate was housed at CTF and on November 5, 2008 staff in the records office was preparing her release for November 6, 2008. On November 5, 2008 staff at the CTF records office received a Judgment and Commitment from superior court sentencing him to serve 20 days in two (2) counts to run concurrent to each other and consecutive to any other sentence. The sentence was posted in JACCS at 7:00 p.m. On the morning of November 6, 2008, records office received a phone call from R&D informing us that they could not release inmate [REDACTED] because her charges were not closed out in JACCS. The record office staff member closed out the charges without reviewing inmate [REDACTED] file. Had the staff member reviewed the file they would have noticed that inmate [REDACTED] charges should have never been closed out.</p>	7-Nov-08	Corrective Action/SWOP
----------	--	--	---	----------	---------------------------

Erroneous Release Date	DCDC#	Inmate's Name	Reasons for Erroneously Released	Date Inmate Return to Custody	Disciplinary Action
22-Jan-09	[REDACTED]	[REDACTED]	<p>Reasons for Erroneously Released</p> <p>Inmate [REDACTED] was erroneously released on January 22, 2009. On February 2, 2009 staff in the records office received a phone call from USM Deputy supervisor inquiring for documents on who authorized inmate [REDACTED] released. While examining the file there were documents belonging to inmate [REDACTED] (Parole Notice of Action and USM Form 41 - Release Forthwith Per attached Notice of Action from USPC). We also received documentations for inmate [REDACTED], and to hold in custody for a local revocation hearing. Both documents were received on the same day and staff inadvertently mixed the documents up.</p> <p>On February 25, 2009, D.C. Superior Court sentenced inmate [REDACTED] to a consecutive sentence of 70 days to be served in prison. Upon the examiners review of the institutional record and the JAACS system, inmate [REDACTED] had been removed from the institution on March 16, 2009 by the United States Marshall Service. That removal led staff who was processing inmate [REDACTED] release to believe the warrant was satisfied; however inmate [REDACTED] was re-booked in the system on March 16, 2009 on an In-transit and In-transit release dated 3/16/2009 which was closed out. Because of the in-transit being closed, staff believed that inmate was not wanted by the Marshall service. Inmate [REDACTED] was erroneously released on May 1, 2009.</p>	2-Feb-09	Corrective Action/Adverse
1-May-09	[REDACTED]	[REDACTED]		7-Jan-10	Corrective Action/Adverse

10-Nov-09	[REDACTED]	<p>Inmate [REDACTED] was committed to D.C. Department of Corrections on October 21, 2009 as a federal program failure. On October 26, 2009 records office received the release documents from the Bureau of Prisons with a release date of November 10, 2009 including their sentence monitoring computation data form. On page four there was a notation, "Ct.5 is a consecutive misdemeanor to be served at D.C. Jail." On November 10, 2009, inmate [REDACTED] was released to self custody, with supervised release based on the BOP's release date from the computation.</p>	5-Nov-10 on other charges	Corrective Action/Adverse
20-Nov-09	[REDACTED]	<p>Inmate [REDACTED] was stepped back into the D.C. Department of Corrections on October 19, 2009 in criminal case [REDACTED] charged with Possession of a Controlled Dangerous Substance, and was sentenced to serve a period of sixty (60) days in jail. On October 20, 2009 records office computed the sentence computation and applied 26 days of jail credit and arrived at a projected release date of November 21, 2009. Staff failed should not have applied 26 days of jail credit to inmate [REDACTED] computation it should have only been 1 day. Because of the additional 25 days that was applied to her computation, inmate was released 25 days early.</p>	Has not returned back in custody	Corrective Action/Adverse
11-Dec-09	[REDACTED]	<p>Inmate [REDACTED] was committed to D.C. Department of Corrections on April 27, 2009 in criminal case [REDACTED] and [REDACTED]. On April 29, 2009 he re-appeared in D.C. Superior Court and returned with commitments in criminal cases [REDACTED]. On November 19, 2009 he was court ordered released in all his charges except criminal case [REDACTED]. He was sentenced in criminal case [REDACTED] to four months in jail, two years of supervised release and upon completion of his sentence he was to be released into the custody of probation, CSOSA (or a bed to bed residential treatment program). On December 11, 2009 records office processed his received a pick up schedule from the treatment program and processed and released inmate [REDACTED] into their custody. Inmate [REDACTED] should have never been released into the treatment program until he had served his sentence which expired on February 19, 2010. On December 30, 2009, inmate was remanded into the custody of DOC.</p>	30-Dec-09	Corrective Action/Adverse

Erroneous Release Date	DCDC#	Inmate's Name	Reasons for Erroneously Released	Date Inmate Return to Custody	Disciplinary Action
4-Jan-11	[REDACTED]	[REDACTED]	<p>Reasons for Erroneously Released</p> <p>On December 13, 2010 inmate [REDACTED] appeared in D. C. Superior Court and court ordered released on the charge of Sexual Solicitation in criminal case [REDACTED] on that same date. December 13, 2010, he received a ninety (90) day sentence in criminal case [REDACTED] for the charge of Bail Reform Act. Staff prepared his computation and arrived at a release date of February 11, 2011. On January 4, 2011, an authorization of release order was prepared by the examiners transferring inmate [REDACTED] to a drug Treatment program, this release was prepared based on a memorandum received from Court Services Offenders Supervision Agency (CSOSA) with a placement date of January 4, 2011. Inmate [REDACTED] sentence expiration date was not until February 11, 2011, therefore he was not entitled to be released to the drug program until after expiration of his sentence.</p>	12-Jan-11	Pending
17-Feb-11	[REDACTED]	[REDACTED]	<p>On February 16, 2011, inmate [REDACTED] was committed to the D.C. Department of Corrections in criminal case no. [REDACTED] charged with Loaning Registration, Misuse of Temporary Tags, with a cash bond of \$100.00 dollars, criminal case no. [REDACTED] charged with No Permit, with a cash bond of \$100.00 dollars, criminal case no. [REDACTED] charged with No Permit, with a cash bond of \$150.00 dollars, criminal case no. [REDACTED] charged with No Permit with a cash bond of \$300.00 dollars, and criminal case no. [REDACTED] charged with Unregistered Vehicle with a cash bond of \$100.00 dollars. Inmate's bonds were paid and verified on February 17, 2011. While processing his release staff reviewed court view and noticed that inmate had a judgment and commitment that was issued but never received in the office and immediately brought it to the attention of a supervisor. The supervisor notified quality and assurance at the D.C. Superior Court and informed them of these findings. Q&A informed us that they would send us a copy of the commitment. However the release authorization form was not taken out of the release queue as instructed. On 2/18/11 at approximately 12:30 p.m., staff reported to the supervisor that this office was in receipt of a pending commitment for inmate [REDACTED] and he had been released. The release for inmate [REDACTED] should not have been effectuated because of the information that was received that the inmate had a pending commitment.</p>	18-Feb-11	Pending

13. ISSUE

In table format, please list each case of over-detention in chronological order January 2007 to present. Include the same type of information requested in Question 12.

RESPONSE

Late Release Date	# of Days Late	DCDC#	Inmate's Name	Reasons for Over Detention	Disciplinary Action
4-Jan-07	28 day(s)	[REDACTED]	[REDACTED]	CCA staff did not compute or notify supervisor at CCA of sentence computation. Had the computation been computed or CCA staff informed the supervisor of the judgment and commitment, inmate sentenced would have been computed and he would have been released timely. Furthermore, this period was when Records Office had a back log of sentence computations.	CCA Staff at that time/Unable to Cite Staff
2-Feb-07	3 day(s)	[REDACTED]	[REDACTED]	The projected release date on the original sentence computation was 2/4/07. When it was reviewed, it was determined that the computation was incorrect. The inmate should have been released 1/31/06 not 2/2/07. This was the period of time when records was very short of staff and had 2 carts of back log computation to complete. Furthermore, records received 26 new employees during this time period.	Insufficient Evidence to determine who to cite.
3-Feb-07	2 day(s)	[REDACTED]	[REDACTED]	Inmate should have been released 2/1/07; however he was not released until 2/3/07. This was the period of time when records was very short of staff and had 2 carts of back log computation to complete. Furthermore, records received 26 new employees during this time period.	Insufficient Evidence to determine who to cite.

9-Feb-07	4 day(s)				Inmate should have been released 2/6/07; however he was not released until 2/9/07. This was the period of time when records was very short of staff and had 2 carts of back log computation to complete. Furthermore, records received 26 new employees during this time period.	Insufficient Evidence to determine who to cite.
10-Feb-07	2 day(s)				Inmate should have been released 2/8/07; however he was not released until 2/10/07. This was the period of time when records was very short of staff and had 2 carts of back log computation to complete. Furthermore, records received 26 new employees during this time period.	Insufficient Evidence to determine who to cite.
10-Feb-07	7 day(s)				Inmate should have been released 2/3/07; however he was not released until 2/10/07. This was the period of time when records was very short of staff and had 2 carts of back log computation to complete. Furthermore, records received 26 new employees during this time period.	Insufficient Evidence to determine who to cite.
28-Feb-07	4 day(s)				Judgment and Commitment was received on 2/26/07. This was the period of time when records was very short of staff and had 2 carts of back log computation to complete. Inmate sentence was computed on February 28th, 2007 and inmate had sufficient jail credit to have been released on the same day she was sentenced. Furthermore, records received 26 new employees during this time period.	Insufficient Evidence to determine who to cite.
8-Mar-07	2 day(s)				Inmate sentence computation was computed incorrectly. Computation was not reflecting and additional 5 days of jail credit.	Counseled
15-Mar-07	23 day(s)				Paperwork was not received by DC Superior Court until 3/8/07.	Unable to Cite Staff

16-Mar-07	17 day(s)			On January 23, 2007 inmate [REDACTED] was sentence by Judge John Bayly in case [REDACTED] for the charge of Attempt theft II to a consecutive 40 day sentence. In case [REDACTED] for the charge of Shoplifting to a consecutive 20 day sentence and case [REDACTED] was court ordered release.	Back log of computations, 26 new employees in the record office
20-Mar-07	97 day(s)			Inmate had served time at St. Elizabeth prior to being sentenced. He was not given the jail credit that was due to him.	Unable to Cite Staff
29-Mar-07	21 day(s)			Inmate was housed at CTF. His sentenced computation was done on two previous occasions that were later found to be inaccurate.	CCA Staff at time/Unable to Cite Staff
10-Apr-07	82 day(s)			This appears to have been a system error. Inmate initial computation was completed on 7/21/06 and second signed on 11/06/06 confirming a release date of 1/18/07. When the short term release report was ran, inmate's name did not appear on it.	System Failure
16-Apr-07	2 day(s)			Inmate's release authorization form was prepared for 4/14/07. In appears that the system was not operating properly. The release was lock in the queue and once that was determined, inmate was released immediately.	System Failure
7-May-07	3 day(s)			Staff prepared the initial signature for inmate [REDACTED] release authorization form on May 3, 2007 for him to be released from Extended Halfway House on May 4, 2007 the second signature was not performed. The electronic release system reflected that the inmate was in the release queue with a release date for May 4, 2007.	System Failure

14-May-07	5 day(s)			Staff failed to properly examine and review the commitment documents for inmate [REDACTED]. They erroneously entered the data from the [REDACTED] and posted in inmate [REDACTED] institutional file.	Admonition
18-May-07	5 day(s)			On 3/28/07 staff computed inmate computation and arrived at a release date of 5/13/07 which was correct, but then return on 4/13/07 and re-computed his sentence to reflect 5/21/07. Had the first calculation of 5/13/07 remained, inmate would have been released on time.	Corrective Action
22-May-07	3 day(s)			On 5/18/07 a sentence computation was computed and a projected release date of 5/19/07 was established. It appears that staff failed to process inmate for release on 5/19/07 because of the belief that he still had open charges. Documents were overlooked.	Counseled
23-May-07	37 day(s)			Sentence computation was computed on 12/1/06 and a release date of 5/23/07 was established. This was during the period that the Records Office was short staffed therefore; a second signature was not applied immediately after the initial was computed.	When back log of computation existed in the Records Office
29-May-07	6 day(s)			Inmate received a ten (10) day sentence of 5/23/07 and had sufficient jail credit to satisfy his sentence in order to be released the same day that the sentence was imposed. The computation was computed timely.	Unable to Cite Staff
4-Jun-07	2 day(s)			Inmate housed at CTF. Sentence was originally computed with a 6/4/07 release date. When processed for release it was found he was entitled to two (2) additional days.	CCA Staff at that time/Unable to Cite Staff

14-Jun-07	117 day(s)	[REDACTED]	[REDACTED]	Staff did not compute all the jail credit the inmate was entitled to receive when doing the initial computation. Mistake was not discovered until June 14, 2007.	Corrective Action/Adverse
5-Jul-07	1 day(s)	[REDACTED]	[REDACTED]	Staff overlooked the Judgement and Commitment dated 9/15/06 in which it was a consecutive sentence. The Judgment and Commitment dated 1/16/07 states that the two sentence should have ran concurrent.	No Discipline Warranted- Employee resigned
12-Jul-07	2 day(s)	[REDACTED]	[REDACTED]	Record Office received a court ordered release and the examiner did enter the information in JACCS charge screen as "Court Ordered Dismissal/Release". However, the examiner failed to notify the supervisor that a court ordered release was received in order to forward the file to the release team.	Admonition
16-Jul-07	5 day(s)	[REDACTED]	[REDACTED]	Staff erroneously placed charge from another inmate on inmate [REDACTED] file. Mistake was not discovered until 7-16-07	No Discipline Warranted- Employee resigned
23-Jul-07	3 day(s)	[REDACTED]	[REDACTED]	Staff had posted a commitment belonging to [REDACTED] to the record of [REDACTED] resulting in him not being released.	Corrective Action
23-Jul-07	13 day(s)	[REDACTED]	[REDACTED]	Inmate was sentence on 7-10-07 and had enough jail credit to satisfy sentence on 7-10-07. Sentence was not computed until 7-23-07 resulting in inmate being released 13 days late.	Unable to Cite Staff

25-Jul-07	4 day(s)	[REDACTED]	Staff did not give the appropriate jail credit, when reviewed it was determined that he should receive additional credit. This resulted in him being 4 days late.	Counseled
26-Jul-07	3 day(s)	[REDACTED]	CCA staff computed the sentence and failed to give inmate sufficient amount of jail credit to satisfy the sixty (60) day sentence. Had the computation been computed on the same day that the sentenced was imposed, inmate would have been released.	CCA Staff at that time/Unable to Cite Staff
3-Aug-07	2 day(s)	[REDACTED]	When the initial face sheet number 3 was generated on 8/2/07 at 5:34 a.m., it appeared that the inmate had an open case. After a corrected face sheet number 2 was completed on 8/2/07 at 2:54 p.m. the case should have been closed out in JACCS on 10/20/06.	Corrective Action
10-Aug-07	52 day(s)	[REDACTED]	On September 4, 2006, an initial sentence computation was computed for inmate to serve 180 days each to run consecutive. When the sentence computation was computed staff applied 2 days of jail credit when in fact they should have applied 50 additional days when the computation was performed on September 4, 2006. They also used the incorrect effective date in the calculation 8/21/06 instead of 8/29/06. Those errors contributed to inmate being released 52 days late from custody.	Employee transferred in 2006
14-Aug-07	6 day(s)	[REDACTED]	Record Office received a court ordered released and the examiner did not enter the information in JACCS charge screen as "Court Ordered Dismissal/Release". Furthermore, the examiner failed to notify the supervisor that a court ordered released was received on inmate [REDACTED]	Letter of Counseling

2-Oct-07	5 day(s)	[REDACTED]	<p>Court Ordered release was not received until 8:14 p.m. on 9/27/07. There was not enough time to process inmate for released because inmate is a juvenile and 10:00 p.m. cut-off. However, his name was written down on the #3 shift activity report with instructions for staff to follow-up on the following morning. It appeared that it was overlooked several days by both the number 1 and 2 shifts.</p>	Unable to Cite Staff
9-Oct-07	9 day(s)	[REDACTED]	<p>Staff computed the inmate sentenced for 255 days which in fact the inmate was only to serve 210 days in jail. The sentence should have ran concurrent to the original sentence not consecutively.</p>	Corrective Action
11-Oct-07	10 day(s)	[REDACTED]	<p>When the initial computation was computed staff arrived at a release date of 10/11/07. However when the second signature was being applied it was found that the inmate should have been released on 10/1/07.</p>	CCA/Unable to Cite Staff
19-Oct-07	3 day(s)	[REDACTED]	<p>On October 9, 2007, staff prepared the sentence computation for inmate [REDACTED] and arrived at a projected release date of October 16, 2007. Staff on the sentence computation team had taken all the necessary steps that were required in processing inmate [REDACTED] release date. On October 22, 2007, a JACCS audit of inmate [REDACTED] Report data base. This report was reviewed to determine why inmate name failed to appear on the short term report. In reviewing the audit, it revealed that another examiner deleted sentencing information and also deleted the projected release date from JACCS. The projected release date is what triggers inmates' name to appear on the short term release report.</p>	New Staff Member Admonition

				<p>On October 11, 2007, Records Office staff created the institutional record for inmate [REDACTED] utilizing the DCDC number of [REDACTED] the number R&D Staff booked her under). Staff entered the data information in JACCS on the booking screen, charge screen, and the sentence detail screen. Staff prepared the sentence computation and arrived at a projected release date of October 18, 2007 to be correct. Staff prepared the Inter-Institutional Transfer (IIT) Order to effectuate the transfer of inmate [REDACTED] along with two (2) other females to CCA/CTF for housing. However, at approximately 11:35 p.m., it appears that staff in the R&D Control Unit realized that inmate [REDACTED] had been incarcerated with DOC [REDACTED] previously and re-booked her with the correct DCDC number of [REDACTED] but, failed to notify Records Office staff that the number had been changed. It is important to note that had the Records Office staff been notified of the correction of the DCDC number, staff could have entered the charge and sentencing information under her correct DCDC number of [REDACTED] and her name and release date information would have appeared on the short term release report with the release date of October 18, 2007.</p>	Staff Not Culpable
23-Oct-07	5 day(s)			<p>Initial sentence computation was completed on 9/7/07 @ 7:39pm and it reflected a release date of 12/3/07, however on 11/28/07 @ 11:14pm staff was reviewing the file for HWH issues and that is when it was discovered that the amount of jail credit that was due to inmate was not applied when the initial computation was completed.</p>	Corrective Action
29-Nov-07	24 day(s)				

			<p>Inmate appeared in court on 11/28/07 from CTF and returned with a J&C and COR. Inmate was sentenced in criminal case no. [REDACTED] to serve a period of 30 days ESS and was COR in criminal case no. [REDACTED]. There was no date/time stamped on neither documents to indicate when it was received. While staff was in the process of reviewing all the files at CTF that is when it was discovered that inmate [REDACTED] should have been released on 11/28/07.</p>	<p>CCA Staff at that time/Unable to Cite Staff</p>
3-Dec-07	5 day(s)	[REDACTED]	<p>COR faxed at 3:19 p.m. on 12/19/07 and staff failed to examine inmate's file in order to determine that the inmate had no other pending charges and inmate [REDACTED] should have been processed for release on 12/19/07.</p>	Counseled

Late Release Date	# of Days Late	DCDC#	Inmate's Name	Reasons for Over Detention	Disciplinary Action
4-Jan-08	1 day(s)	[REDACTED]	[REDACTED]	<p>COR received on 1/3/08 along with 2 prisoner return slips. All documents were stapled together. Staff failed to examine the documents to determine what documents were received. On January 4, 2008 case manager notified the records office inquiring about inmate's release order dated January 3, 2008. Staff retrieved inmate's file and noticed 2 prisoner return forms along with a release order for the case that the inmate was committed on. Inmate was processed for release on 1/4/08.</p>	No Staff Cited
13-Jan-08	3 day(s)	[REDACTED]	[REDACTED]	<p>Inmate pare work was prepared on Thursday 1/10/08 for released on 1/11/08 at 7 p.m. The special instructions indicated "release immediately, once he reports he has satisfied his weekend sentence. Inmate was in the release queue to be released on 1/11/08 however, it did not occur. Inmate was released on 1/13/08.</p>	System Error
5-Feb-08	20 day(s)	[REDACTED]	[REDACTED]	<p>Inmate was COR in criminal case [REDACTED] on 1/16/07. There was another case (criminal case [REDACTED]) posted in the inmate's jacket and applied to the face sheet however the case did not belong to inmate [REDACTED].</p>	Counseled
13-Feb-08	2 day(s)	[REDACTED]	[REDACTED]	<p>On February 06, 2008, inmate [REDACTED] was processed into the CDF. The only committing document that was received was a USM detainer. Staff should have never placed the detainer on inmate because the detainer was addressed to PG Co. Detention Facility to let them know he was wanted by the USM.</p>	No Staff Cited/Incorrect paperwork given to Records Office by USM

25-Feb-08	4 day(s)	[REDACTED]	<p>Inmate was sentenced in criminal case number [REDACTED] to serve a period of 100 days in jail on each count 6&7 and in criminal case [REDACTED] to serve twenty days in jail consecutive to any other sentence now serving. The computations on these two cases were computed and staff arrived at a projected release date of 10/26/07. On 5/2/07 & 7/31/07 he appeared in court and returned with a J&C sentence to serve a period of 180 days in ESS as to all but 120 days in jail with credit for time served. This sentence was aggregated to the others and on 8/6/07 staff computed his computation and arrived at an expiration date of 2/20/08 however, a second signature was never applied for confirmation. Had the second signature applied in a timely manner this late release of inmate [REDACTED] would not have occurred.</p>	Admonition
12-Mar-08	1 day(s)	[REDACTED]	<p>Inmate was sentenced in criminal case [REDACTED] to serve a period of ninety (90) days and ten (10) days in criminal case [REDACTED]. Staff computed the sentence computation and missed 2 days of jail credit causing inmate to be released 1 day late from D.C. Department of Corrections.</p>	Counseled
17-Apr-08	9 day(s)	[REDACTED]	<p>Inmate was sentenced to serve a period of five (5) months in jail with credit for time served. On April 1, 2008, a jail credit was completed and faxed to the BOP, for a release date. On April 8, 2008, a fax from the BOP was received and the release date that was indicated was April 18, 2007 and mistook the release date to be April 18, 2008 thus, causing him to be over detained. On April 17, 2008 inmate was immediately processed for released.</p>	Counseled
20-May-08	4 day(s)	[REDACTED]	<p>Inmate [REDACTED] was sentenced to serve a period of ninety (90) days in jail, probation revoked. It appears that the sentence was annotated on the Face Sheet #1, however the institutional jacket was re-file when it should have been placed in the sentence computation cart in order for the computation to have been computed.</p>	No Staff Cited

22-May-08	11 day(s)	<p>Inmate was sentenced to serve a period of one hundred (100) days in jail on count 3 and 4 to run concurrent to each other. An initial sentence computation was computed and staff arrived at a projected release date of May 11, 2008. On February 27, 2008 a Writ of Habeas Corpus Ad Prosequendum/Testificandum was received in the records office, bearing the name of [REDACTED] which Staff erroneously placed the writ against [REDACTED] which caused him to be over detained for 11 days.</p>	Admonition
30-May-08	43 day(s)	<p>Inmate [REDACTED] was sentenced to serve a period three hundred sixty-five (365) days in jail ESS as to all but forty-five (45) days in jail to count 1. Count 3 Forty-five (45) days in jail ESS consecutive to count 1. Staff should have completed the computation to reflect that inmate was only serving forty-five (45) days and the forty-five (45) days to count 3 was suspended because they aggregated the inmate sentence the computation reflected that he was serving ninety (90) days instead of forty-five (45) days which caused inmate [REDACTED] to be 43 days late.</p>	Corrective Action
24-Jun-08	3 day(s)	<p>Inmate was sentenced to serve a period of ninety (90) days ESS all but four (4) days in jail followed by eighteen (18) months unsupervised probation. Staff failed to compute the 2 days of jail credit in the calculating screen and enter calculate in order for JACCS to have calculated the sentence correctly.</p>	Counseled
24-Jun-08	2 day(s)	<p>Inmate [REDACTED] was sentenced to serve on count 1 a period of 60 days ESS all but 10 days consecutive in jail. Count 2 - 120 days ESS all but 10 days in jail. Staff computed the computation and failed to give inmate [REDACTED] 2 days of jail credit instead they applied 1 day of jail credit which projected a release date of June 24, 2008, which in fact it should have been June 22, 2008.</p>	Counseled

30-Jun-08	10 day(s)	<p>Inmate was sentenced to serve a period of one hundred and eighty (180) days incarceration with credit to be given for time served. On June 20, 2008, an amended J&C in criminal case [REDACTED] was received in the records office dated 06/18/08. Nunc Pro Tunc 05/23/08 sentencing inmate [REDACTED] one hundred twenty (120) days in jail with credit for time served was placed in inmate's file. While staff was reviewing inmate's file for transfer to the halfway house it was discovered that the amended J&C that was placed in the file had a different sentenced structure. When staff re-computed the sentence it was discovered that inmate had remained in the facility 10 days late.</p>	Admonition
10-Jul-08	20 day(s)	<p>Upon review of inmate's institutional record, it was discovered that the inmate was released on April 16, 2008, via expiration of his thirty days sentence to the custody of officials from Oak Hill. On July 4, 2008, while computing inmate sentence computation the examiner discovered that it appeared that he had already served the sentence in question. The examiner informed the Lead Examiner, who verified this finding, and concluded that the inmate should have not remained in the facility for 20 days. When inmate was committed on June 20, 2008, it appears that he was booked on previously served charges.</p>	No Staff Cited
15-Jul-08	4 day(s)	<p>Inmate [REDACTED] was sentenced to serve a period of 120 days in jail with credit for time served. Inmate's sentence computation was completed on July 15, 2008, and it was discovered that inmate had sufficient jail credit to have been released on July 10, 2008.</p>	Counseled

17-Jul-08	2 day(s)	[REDACTED]	<p>CDF Records Office received inmate [REDACTED] institutional file from CTF to apply a second signature on a projected release date of July 17, 2008. While performing the second signature, it was discovered that sufficient credit was not applied to inmate during the initial computation. On June 13, 2008, inmate absconded from the Halfway House and returned on June 14, 2008. Staff applied 2 days of inoperable time to the initial computation with the assumption that inmate [REDACTED] had absconded from the halfway house for a full 24 hour period.</p>	Counseled
28-Jul-08	14 day(s)	[REDACTED]	<p>A Form USM-40 was faxed to the records office stating to RELEASE FORTHWITH PER ATTACHED USPC NOA. The Notice of Action was dated July 13, 2008. On July 15, 2008, a sentence computation was prepared in the consecutive criminal case [REDACTED] and arriving at a projected release date of 08/17/08. Due to the USPC reinstating the parole of inmate [REDACTED] he became eligible to receive credit from the time he was committed (4/25/08) until the date of Notice of Action was received (7/14/08), which satisfied the 45 day sentence.</p>	Admonition
28-Jul-08	1 day(s)	[REDACTED]	<p>A sentence calculation was computed and a projected release date of 07/27/08 was established. The sentence structure was calculated in the sentence screen in JACCS however, it was not transpose to the sentence detail. Therefore, when the short term release report was ran inmate's name did not show up on the report, which contributed to inmate being late.</p>	Counseled
30-Jul-08	6 day(s)	[REDACTED]	<p>An initial sentence computation was computed arriving at a projected release date of December 14, 2008. On July 24, 2008, the records office received an amended J&C to nunc pro tunc the sentenced to July 2, 2008. Staff should have re-computed inmate's computation to reflect his adjusted release date of July 2, 2008.</p>	No Staff Cited

25-Aug-08	3 day(s)	[REDACTED]	<p>Court ordered release was received at the CDF Records Office. On the same day at approximately 11:20 p.m., inmate was transferred to CTF due to medical reasons. Staff on each shift should have checked CTF envelope and continued to process inmate's release for the following day.</p>	No Staff Cited
25-Aug-08	7 day(s)	[REDACTED]	<p>Court ordered release was received at the CDF Records Office. On the same day at approximately 11:20 p.m., inmate was transferred to CTF due to medical reasons. Staff on each shift should have checked CTF envelope and continued to process inmate's release for the following day.</p>	Counseled
29-Aug-08	7 day(s)	[REDACTED]	<p>Staff assigned in the R&D posted a forty-five (45) day sentence accordingly to a J&C dated April 4, 2008. When the J&C was received in the Records Office staff rechecked the intake and posted the J&C as pre-trial, removing the forty-five (45) day sentence from the sentencing screen. Because of the forty-five (45) day sentence being removed from the sentencing screen, inmate's name did not appear on the crystal report as inmate needing sentence computation. That error caused inmate to be release days late from custody.</p>	Counseled
15-Sep-08	25 day(s)	[REDACTED]	<p>Staff in the records office computed the sentence but failed to transpose the information into the sentence detail screen in JACCS. Because staff did not process the sentence computation in its entirety, the error caused inmate to be released from custody 25 days late. Staff in the records office computed the sentence but failed to transpose the information into the sentence detail screen in JACCS. Because staff did not process the sentence computation in its entirety, the error caused inmate to be released from custody 25 days late.</p>	Admonition

26-Sep-08	2 day(s)	<p>Records office staff erroneously posted a U.S. District Court case on inmate [REDACTED]. He appeared in DCSC in criminal case [REDACTED] the actual case he was being detained on and was court ordered released on 9/24/08. However since the case he was being erroneously detained on was annotated on his face sheet #1, staff did not verify whether the case belong to inmate [REDACTED] or not.</p>	Admonition
27-Sep-08	30 day(s)	<p>While staff were reviewing the folders in the sentenced misdemeanor cart for short sentences that had not been computed it was found that the inmate [REDACTED] had a 120 days sentenced on August 28, 2008. On a daily basis, the sentence computation team is required to run a crystal report which indicates which inmate needing a sentence computation. It appeared that inmate's name showed up on the report several times.</p>	System Error
28-Sep-08	6 day(s)	<p>Inmate [REDACTED] sentence computation was computed in error. In reviewing inmate's file to apply a second signature, record office staff determined that 7 days of jail credit was missed causing inmate to be released 6 days late.</p>	Corrective Action
31-Oct-08	8 day(s)	<p>On May 13, 2008, inmate [REDACTED] was sentenced in criminal case in jail consecutive to each other. [REDACTED] to serve ninety (90) days on May 13, 2008 with a projected release date of 10/21/08 with two examiners signature in agreement. It appears that on May 16, 2008 a senior examiner re-computed the computation and arrived at a projected release date of November 1, 2008. Because the examiner re-computed the sentence, the inmate's name would not have appeared on the inmate's needing sentence computation list. The examiner's error, caused inmate [REDACTED] to be released 8 days late.</p>	Corrective Action

6-Nov-08	1 day(s)	<p>Inmate was committed as a pretrial sanction to serve a period of thirty-six (36) days in jail and to be released on November 5, 2008 at 7:00 a.m. Because staff failed to post the release information correctly in JACCS in the sentence calculation (projected release data field) screen, when the short term crystal report was ran it was unable to pick up inmate's name. Instead the release information was posted in the booking screen where you are unable to retrieve it when running the short term report.</p>	Counseled
10-Nov-08	1 day(s)	<p>It appears that inmate was to surrender his self on 11/5/08 and was sentenced to serve 5 days in jail and to be released on 11/9/08. There was no data posted in JACCS, no commitment package (face sheet #1, fingerprint card, property form, etc. found. There was no case information in JACCS' charge detail or sentence detail screen at all. It appears that the error began from R&D/Intake to the Records Office and the end result causing inmate [redacted] to be released one day late.</p>	No Staff Cited
13-Nov-08	2 day(s)	<p>Inmate was sentenced to serve a period of 60 days in jail credit for time served. An initial computation was computed and awaiting for a second signature. The staff that was computed the second signature didn't realize that she made an error and returned the file in the cabinet without a second signature. When the short term report was ran it was discovered that the computation was computed incorrect.</p>	Counseled
5-Dec-08	1 day(s)	<p>Inmate was sentenced to time served plus three (3) additional days in jail. Staff should have immediately computed inmate's computation; however the computation was not computed until December 5, 2008. That is when staff realized that inmate's projected release date was 12/4/08, and inmate was processed for immediate release.</p>	<p>Difficult to determine who to cite since this process went through three (3) different shifts. However we have procedures in place to catch these types of errors.</p>

Late Release Date	# of Days Late	DCDC#	Inmate's Name	Reason for Over Detention	Disciplinary Action
3-Jan-09	1 day(s)	[REDACTED]	[REDACTED]	On January 3, 2009, while processing inmate [REDACTED] for expiration for January 6, 2009, it was discovered that inmate should have been released on January 2, 2009. When staff computed the sentence computation they applied 25 days of jail credit, when in fact it should have been 28 days on a 115 day sentence structure with credit for time served. Inmate [REDACTED] was released on January 3, 2009, from the D.C. Department of Corrections one (1) day late.	Counseled
30-Jan-09	3 day(s)	[REDACTED]	[REDACTED]	Inmate was sentenced to serve 20 days in jail. An initial computation was computed on January 27, 2009 and a projected release date of February 3, 2009 was established. When inmate's sentence computation was computed staff applied 8 days of jail credit, when in fact inmate had sufficient jail credit to be released on the day she was sentenced.	Admonition
2-Feb-09	64 day(s)	[REDACTED]	[REDACTED]	On July 10, 2008, inmate [REDACTED] appeared in D.C. Superior Court in criminal case [REDACTED] and returned with a Judgment and Commitment sentence to a period of ninety (90) days in counts 1 and 2 consecutively. On February 2, 2009, it was discovered that inmate's computation was never computed or posted in JACCS. Once it was discovered staff immediately computed the initial computation and arrived at a release date of November 30, 2008. Inmate [REDACTED] was immediately processed for release.	Staff Resigned
18-Feb-09	6 day(s)	[REDACTED]	[REDACTED]	The initial examiner that computed inmate's sentence computation applied 31 days of jail credit when in fact it should have been 35 days. Therefore inmate was released six days late.	Admonition

<p>20-May-09</p>	<p>1 day(s)</p>	<p>On May 6, 2009, inmate [REDACTED] was sentenced in criminal case [REDACTED] to serve a period of thirty (30) days incarceration, with credit for time served. On May 6, 2009, staff computed the initial computation and arrived at a projected release date of May 20, 2009. The examiner applied fifteen (15) days of jail credit when in fact it should have been sixteen (16) days. Had the examiner applied sixteen (16) days of jail credit to inmate [REDACTED] computation, he would not have been released one (1) day late. Inmate [REDACTED] was immediately processed for release.</p>	<p>Staff Retired</p>
<p>30-Jun-09</p>	<p>4 day(s)</p>	<p>Inmate [REDACTED] was committed to the D.C. Department of Corrections on May 30, 2009, in criminal case [REDACTED] charged with Theft Second Degree, held without bond. On June 3, 2009, she appeared in D.C. Superior Court in criminal case [REDACTED] and returned with a commitment and her bond was set at \$300.00 cash. Furthermore, on June 12, 2009, she re-appeared in D.C. Superior Court in criminal case [REDACTED] and was court ordered released. On that same date inmate [REDACTED] also returned with a Judgment and Commitment in criminal case [REDACTED] charged with Theft Second Degree and sentenced to serve thirty (30) days. On June 13, 2009, at approximately 10:18 a.m., staff in the record office computed inmate [REDACTED] sentence computation and arrived at a projected release date of July 9, 2009. Inmate was committed in criminal case [REDACTED] and the case was dismissed as part of a plea bargain. The new Judgment and Commitment in criminal case [REDACTED] did not indicate that the case inmate [REDACTED] was sentenced in was a plea bargain agreement nor was she charged with Bail Reform Act (BRA). Because of the different criminal case numbers and inmate was not charged with Bail Reform Act (BRA) record office staff was not able to determine that the cases were one of the same.</p>	<p>Staff not culpable. Staff had no knowledge of plea bargain cases if we are not informed.</p>

13-Jul-09	1 day(s)	[REDACTED]	<p>On July 10, 2009, inmate [REDACTED] reported to the Central Detention Facility to serve the remainder of her sentence received on June 18, 2009 of forty five (45) days in criminal case [REDACTED] charged with Attempt Possession of a Control Substance (Cocaine)-Misdemeanor. She was to serve the first fifteen (15) days in jail straight time and the remainder of the thirty (30) days to be served over a period of ten (10) consecutive weekends. That sentence was to begin on Friday, July 10, 2009. She was to report at 7pm on Friday and be released at 7pm on Sunday. On July 10, 2009 a face sheet was prepared by staff reflecting the computation of the fifteen days of straight time that had already been served prior to the release of inmate [REDACTED] on July 2, 2009. When inmate [REDACTED] returned to D.C. Jail on July 10, 2009, staff should have reviewed the judgment and commitment, face sheet 1 & 2 and would have realize that inmate [REDACTED] was beginning to serve her weekend sentence and should have processed her as a weekender. Had staff processed her as a weekender she would not have been over detained by one (1) day.</p>	Counseled
11-Aug-09	1 day(s)	[REDACTED]	<p>On August 11, 2009, record office received a telephone call from a case manager to inform us that there are two inmates with the same names that are being held in the institution. The case manager went on to say that inmate [REDACTED] had a charge that was posted in JACCS that did not belong to him. After further review it was determined that inmate [REDACTED] did in fact have a Judgment and Commitment order belonging to inmate [REDACTED] posted in JACCS, his institutional record and the sentence was calculated in error on inmate [REDACTED] inmate [REDACTED] was sentenced to 15 days and inmate [REDACTED] was sentenced to 120 days. Had staff not post 120 days on inmate [REDACTED] in error, he would not have been released one (1) day late.</p>	Counseled/Admonition

11-Aug-09	1 day(s)	<p>[REDACTED]</p>	<p>On August 11, 2009, records office received an email from FBOP inquiring about inmate [REDACTED] release. After retrieving his institutional record it was discovered that inmate [REDACTED] should have been released on August 10, 2009, per document received on July 22, 2009. Releasing documents were received on July 22, 2009 via fax and time stamped 11:15 a.m., from FBOP. Upon checking in the JACCS system it was determined that staff did not post the release date information in the appropriate data field. Had inmate [REDACTED] release date placed in the appropriate data field, when staff ran the crystal report for the short term release date on August 10, 2009, his name would have appeared in order to process his release. That error caused inmate [REDACTED] to be released one (1) day late.</p>	Unable to determine who to cite
3-Sep-09	34 day(s)	<p>[REDACTED]</p>	<p>On July 16; 2009, records office received via faxed release documents on [REDACTED] from FBOP reflecting a release date of 7/31/09. Since inmate [REDACTED] was housed at CTF, on that same date 7/16/09, the correct release date was entered in JACCS to reflect 7/31/2009 and her release documents was faxed to CTF. However, on July 20, 2009, another staff member changed the correct date of 7/31/09 to 9/3/09 causing inmate [REDACTED] to be released 34 days late from custody.</p>	Corrective Action/Adverse has been issued

6-Oct-09	20 day(s)	[REDACTED]	<p>On August 4, 2009, inmate was transferred to Rappahannock Va. by case management services, no releasing documents were forwarded during time of transfer. Also, on August 4, 2009, on day of transfer, R&D officer released inmate [REDACTED] from JACCS giving the appearance that she was permanently released and not transferred. A sentence computation was computed and staff arrived at a projected release date of September 16, 2009. Staff took all necessary steps that's required in preparing inmate [REDACTED] release date. However, since she was completely released off JACCS by R&D, her name did not appear on the Short Term Release for the September 16, 2009 date. That error caused inmate [REDACTED] to be released twenty (20) days late from custody.</p>	Unable to determine who to cite
9-Oct-09	24 day(s)	[REDACTED]	<p>On October 9, 2009, CTF/record office received a telephone call from inmate's mother regarding the release date of her son. After reviewing JACCS, staff discovered that the sentence computation had not been computed. After further investigation and review of the inmate's record, the inmate was sentenced on Thursday, September 17, 2009 as to a court return clocked in at 8:29 p.m. and posted. Inmate was sentenced to 75 days in jail with credit for time served and had sufficient jail credit to have been released on September 17, 2009. However inmate [REDACTED] could not have been released on September 17, 2009 because he had an MPD detainer lodged by the fugitive unit for Prince Georges County, Maryland. On October 9, 2009 once the computation was completed and processed, fugitive unit was called for inmate [REDACTED] to be processed into their custody. Had inmate [REDACTED] computation was processed on September 17, 2009, he would not have been released twenty-four (24) days late from the D.C. Department of Corrections.</p>	Difficult to determine which staff at CTF did not complete the process since no data was entered in JACCS.

13-Oct-09	48 day(s)	<p>On June 18, 2009, inmate [REDACTED] was sentenced to serve 90 days consecutive in criminal cases [REDACTED] and [REDACTED]. Staff computed his sentence computation and arrived at a projected release date of December 9, 2009, when in fact it should have been August 5, 2009 missing 126 days of jail credit. Had staff computed inmate [REDACTED] sentence computation correctly, those two cases would have been closed out on August 5, 2009. However he would have remained in custody because of an open charge (case [REDACTED]) that he was also being detained on. Inmate [REDACTED] was not court ordered released from that charge until August 25, 2009. Because of the computation being incorrect, inmate [REDACTED] was released 48 days late from custody.</p>	<p>On August 14, 2009, inmate [REDACTED] was sentenced in criminal case [REDACTED] to serve 30 days in jail, consecutive to any other sentence. Also on August 14, 2009, she was sentenced in criminal case [REDACTED] to serve 30 days in jail on count 1 and 30 days in jail on count 3, counts 1 and 3 are to run concurrent to each other; criminal case [REDACTED] she was sentenced to serve 90 days in jail on count 1 and 90 days in jail on count 2, counts 1 and 2 are to run concurrent to each other and consecutive to any other sentence. Therefore, inmate [REDACTED] was serving a total of 120 days in jail. On August 21, 2009, staff computed her computation credit her with 35 days of jail credit with a projected release date of November 6, 2009. On November 5, 2009, while processing her for release it was discovered that case [REDACTED] was dismissed as part of a plea agreement in criminal cases [REDACTED] and [REDACTED], therefore she should have received 42 days of jail credit in lieu of 35 days. Had inmate [REDACTED] received the 42 days of jail credit, she would not have been released seven (7) days late from the D.C. Department of Corrections.</p>	Staff Resigned
5-Nov-09	7 day(s)			Staff Retired

21-Dec-09	1 day(s)	<p>[REDACTED]</p>	<p>On December 14, 2009, inmate [REDACTED] was committed to D. C. Department of Corrections in criminal case to serve a sentenced 10 days in jail. On that same date the initial sentence computation was computed and staff arrived at a projected release date of 12/22/09. Also on that same date inmate was transferred to CTF because of her being a female along with her institutional record. A second signature was not computed at CTF. When inmate was being prepared for released it was discovered that the computation did not have a second signature. Staff at CTF attempted to apply the second signature and discovered that the inmate did not received sufficient jail credit. The computation was re-computed to reflect the 3 days of jail credit giving the inmate a projected release date of 12/20/09. Because of the two day public law, inmate should have been released on Friday, December 18, 2009.</p>	Counseled
-----------	----------	-------------------	---	-----------

Late Release Date	# of Days Late	DCDC#	Inmate's Name	Reason for Over Detention	Disciplinary Action
11-Jan-10	89day(s)	[REDACTED]	[REDACTED]	<p>On Monday, January 11, 2010, at approximately 5:45 p.m. Mr. Chief Case Manager brought me two JACCS printouts on [REDACTED] and [REDACTED] indicating that a writ was posted on [REDACTED] which does not belong to him. It belongs to [REDACTED]. I immediately took the information from [REDACTED] and began my search. I retrieved both inmates' institutional file and it appears that [REDACTED] was released appropriately. On September 22, 2009, we received court return documents (USM Form-41) from the USM returning him from court. The form-41 indicated one male court return, inmate's name and DCDC# returning him as ASR with WRIT documentation attached. On that same day the WRIT was posted in JACCS on inmate [REDACTED] per documents received. Inmate [REDACTED] could have been released on October 14, 2009 expiration. Because of the WRIT documents that were received and posted on inmate [REDACTED] inmate was not processed for released.</p>	Corrective/Adverse Action Issued

29-Jan-10	1 day(s)	[REDACTED]	<p>On January 25, 2010 inmate [REDACTED] returned to D.C. Department of Corrections from FCI Schuykill placed in-transit based on a detainer to address criminal case [REDACTED]. However while processing inmate [REDACTED] as a new intake staff found an outstanding paternity support warrant on [REDACTED] in criminal case [REDACTED]. On January 26, 2010 he appeared in D.C. Superior Court and was released in the paternity support warrant and also was committed in criminal case [REDACTED] charged with Distribution of a Controlled Substance and was held without bond. On January 27, 2010 he re-appeared in D.C. Superior Court in criminal case [REDACTED] in lieu of \$10,000 cash bond. On January 28, 2010 inmate [REDACTED] re-appeared in D.C. Superior Court in criminal case [REDACTED] and was court ordered released. Because a detainer was placed on inmate [REDACTED] when he returned from D.C. Superior Court in error staff assumed that he would not be released. Staff did realize the detainer was placed on the inmate and they thought they had completely closed it out JACCS and did not cross it out on the facesheet. On January 28, 2010, had staff processed the court order release in its entirety and reviewed the file, they probably would have noticed that the detainer should not have been posted on inmate [REDACTED].</p>	Used the detainer as a roll call issue and staff were counseled.
5-Feb-10	2 day(s)	[REDACTED]	<p>On January 12, 2010 inmate [REDACTED] was sentenced to serve a period of 15 days in criminal case [REDACTED] and 15 days in criminal case [REDACTED] consecutively. On January 13, 2010 staff in the records computed inmate's sentence computation and applied 4 days of jail credit and arrived at a projected release date of 2/6/10. On Friday, February 5, 2010 while processing his release authorization form it was discovered that inmate's computation was computed incorrectly. Staff should have applied seven days of jail credit to inmate's computation in lieu of four days. Had staff applied the seven days of jail credit to inmate's computation, inmate [REDACTED] would have been released on February 3, 2010, two (2) days late.</p>	Letter of Counseling

17-Feb-10	5 day(s)	[REDACTED]	[REDACTED]	<p>On February 3, 2010, inmate [REDACTED] appeared in D.C. Superior Court and was sentenced to serve a period of thirty (30) days in jail with credit for time served. Also on February 3, 2010, staff computed inmate [REDACTED] sentence computation and applied five (5) days of jail credit and arrived at a projected release date of February 27, 2010. On February 17, 2010, record office was notified by case management to inquire about inmate [REDACTED] computation. Staff in the record office reviewed the sentence computation and discovered that inmate [REDACTED] computation was computed incorrectly. Inmate [REDACTED] projected release date should have been February 12, 2010 in lieu of February 27, 2010. It was discovered that he should have received twenty (20) days of jail credit instead of the five (5) days that was applied.</p>	Pending
10-Apr-10	1 day(s)	[REDACTED]	[REDACTED]	<p>On April 10, 2010 at approximately 12:27 a.m., staff received a phone call from the family of inmate [REDACTED] inquiring about his release. Staff retrieved the record from the file cabinet. After careful review of the record, it was discovered that inmate [REDACTED] had a release order and a prisoner return stapled together in his jacket. The prisoner return was stapled on top of the release order and they were both time stamped at 12:53 p.m. on 4/9/10. Inmate was immediately processed and released at 1:48 a.m. It appears that staff did not thoroughly review the documents that were received in order to effectuate [REDACTED] release.</p>	Letter of Counseling

10-Apr-10	1 day(s)	[REDACTED]	<p>Court ordered release received at 12:53 p.m.; after careful review of the record it was discovered that inmate [REDACTED] had a release order and a prisoner return stapled together in his jacket. The prisoner return was stapled on top of the release order and they were both time stamped at 12:53 p.m. 4/9/10. Inmate was immediately processed and released at 1:57 a.m. It appears that staff did not thoroughly review the documents that were received in order to effectuate inmate [REDACTED] release. The institutional jacket was filed back in the file cabinet.</p>	Letter of Counseling
10-Apr-10	1 day(s)	[REDACTED]	<p>On April 9, 2010 at approximately 11:40 p.m., staff received a phone call from the family of inmate [REDACTED] inquiring about his release. Staff retrieved the record from the file cabinet and after careful review, it was discovered that inmate [REDACTED] had a release order in his jacket. The release order was time stamped at 12:53 p.m. on 4/9/10. Inmate was immediately processed and released at 2:03 a.m. It appears that staff did not thoroughly review the document that was received in order to effectuate inmate [REDACTED] release</p>	Letter of Counseling

20-Apr-10	1 day (s)	[REDACTED]	[REDACTED]	<p>At approximately 5:30 a.m., staff brought to supervisor's attention that inmate's J&C which stated 12 months e.s.s. in case [REDACTED] along with a court ordered release in the same case dated 4/19/10. Because the J&C read that the inmate had "one year supervised probation per intervention plan." The supervisor assumed that the inmate as to be released into the custody of a program.</p>	<p>No staff cited. Staff did not understand language of judgment and commitment to include the supervisor.</p>
5-May-10	1 day (s)	[REDACTED]	[REDACTED]	<p>Inmate [REDACTED] was housed at the HWH and appeared in D.C. Superior Court in criminal case [REDACTED] and returned with a judgment and commitment (J&C). Inmate was sentenced to 24 months incarceration execution of sentence suspended as to all but time served to be followed by two years of supervised release, execution of which are to be served in a halfway house. Staff notified quality assurance to obtain a release order, however, since the language of the judgment and commitment states "execution of sentence suspended as to all but time served" and the inmate was not given any time to serve, a release order was not needed. Inmate [REDACTED] release should have been processed on May 5, 2010 when the J7C was received.</p>	<p>Pending</p>

17-Jun-10	2 day(s)	[REDACTED]	<p>On June 17, 2010 while processing inmate [REDACTED] computation to apply the second signature, staff informed the supervisor that they thought that the inmate should have been released prior to his projected release date. The examiner requested that the supervisor examine the file to determine whether the initial computation was correct of the projected release date of June 23, 2010. Upon thorough review, the supervisor was in agreement with the examiner that the computation was incorrect and the correct release date should have been June 15, 2010, in lieu of June 23, 2010. Inmate [REDACTED] should have been released on June 15, 2010.</p>	Pending
29-Jun-10	8 day(s)	[REDACTED]	<p>On June 21, 2010, inmate [REDACTED] was court ordered by Judge Cushenberry to be transferred to the D. C. Department of Corrections from Saint Elizabeth Hospital via a court ordered release received from D. C. Superior Court in case number [REDACTED] for the offenses of Unlawful Entry; case number [REDACTED] was sentenced in case number [REDACTED] to serve a sentence of ninety (90) days in prison to be served consecutive, with credit for time served. While staff was processing inmate [REDACTED] computation of ninety days it was determined that he was over detained for a total of eight (8) days. Inmate [REDACTED] was eligible to be released on the same day he was sentenced June 21, 2010. Therefore inmate was immediately processed and released on June 29, 2010.</p>	Pending

15-Jul-10	6 day(s)	[REDACTED]	<p>On April 6, 2010 inmate [REDACTED] was committed into the Department of Corrections in criminal case [REDACTED] on Possession of a Controlled Substance Marijuana-Misdemeanor Sentenced to Ct. 1: time served plus three (3) days in jail. The three (3) day initial sentence was computed with an expiration date of April 8, 2010 with no jail credit awarded because the sentence was time served plus 3 days. On April 7, 2010, he was sentenced in criminal case [REDACTED] to serve a period of 90 days in jail to run consecutive to any other sentence serving. He was also sentenced in criminal cases [REDACTED] to a period of 30 days in jail. On April 9, 2010, staff computed the computation starting the sentence on April 6, 2010 with a total of 120 days with 19 days of jail credit for criminal cases [REDACTED] and [REDACTED] with a projected release date of July 17, 2010. On July 15, 2010 while processing releases for expiration, staff noticed an error with the effective date of April 7, 2010 in the JACCS system. Staff re-computed his sentence again starting the sentence date at April 6, 2010 and also found additional jail credit of 9 days to be applied to the sentence given on April 7, 2010. It appears that inmate [REDACTED] should have been released on July 9, 2010. The total sentence of the court for inmate [REDACTED] should have been 123 days with 28 days of jail credit with an expiration date of July 9, 2010 instead of July 17, 2010 making the inmate seven (7) days late.</p>	Pending
-----------	----------	------------	---	---------

				<p>On March 16, 2010, inmate [REDACTED] was sentenced in three criminal cases. In criminal case [REDACTED] Count (1) No Permit, he was sentenced to 15 days in jail, consecutive to any other sentence; Count(2) Contempt, ninety (90) days in jail, consecutive to count (1) and concurrent to any other sentence. In criminal case [REDACTED] Driving Under the Influence, he was sentenced to 30 days in jail to run consecutively to count (1) of [REDACTED] and concurrent to count (2) of [REDACTED] and concurrent to any other sentence. In criminal case [REDACTED] Count (1) No Permit, he was sentenced to forty-five (45) days. When staff computed his sentence, they added all the sentences together totaling one hundred eighty (180) days and applied thirteen (13) days of jail credit with a projected release date of 8/29/10. When in fact inmate [REDACTED] should have served the 90 and 15 days which totaled to 105 days, because the 45 and 30 day sentence would have been absorbed by the 90 and 15 day. When inmate [REDACTED] computation was re-computed it was discovered that his projected release date should have been June 19, 2010 instead of August 29, 2010. This error caused inmate [REDACTED] to be released 67 days late from the D.C. Department of Corrections.</p>	Pending
25-Aug-10	67 day(s)	[REDACTED]	[REDACTED]	<p>Inmate [REDACTED] was committed to D.C. Department of Corrections on September 1, 2010 held in transit and also was accompanied by a [REDACTED] detainer. Inmate was released in-transit and ordered to appear in U.S. District Court on September 2, 2010. Inmate [REDACTED] returned with a Pre-Trial commitment in criminal case [REDACTED] (replacing magistrate number [REDACTED] for Failure to Register as a Sex Offender. On September 3, 2010 inmate appeared in District Court and returned with a release order in criminal case [REDACTED]. Staff made an annotation on the inmate face sheet of the court order released but not realizing that the detainer that was in the inmate's jacket was the detainer he appeared in court to address and was court ordered released in.</p>	Pending

4-Oct-10	2 day(s)	<p>On September 17, 2010, inmate [REDACTED] was stepped back into the D.C. Department of Corrections in criminal case charged with count 1 Driving Under Influence-1st Offense; count 3 Leaving After Collid Injury. He was sentenced to serve a period of 30 days in count one; and 30 day's incarceration with credit for time served in count three. Also on September 17, 2010 a sentence computation was computed and staff applied two days of jail credit and arrived at a projected release date of October 14, 2010. On October 4, 2010, Record Office received a phone call from inmate's attorney in reference to [REDACTED] release date. Staff retrieved the inmate's jacket and reviewed the jacket and discovered that the computation was incorrect. Staff recomputed inmate [REDACTED] computation and applied 14 days of jail credit and arrived at a projected release date of October 2, 2010. Because staff missed 12 days of jail credit, inmate [REDACTED] was released 2 days late from the D.C. Department of Corrections.</p>		
8-Oct-10	1 day(s)	<p>On Friday October 8, 2010, at approximately 3:52p.m., staff in the release team was reviewing the release process for expiration for inmate [REDACTED] and discovered that there were two days of jail credit missing in the computation. On September 20, 2010 [REDACTED] was committed to DC Jail with a Commitment Pending Disposition to case number [REDACTED] for the charge of Simple Assault, with no bond. On September 22, 2010, that case was sentenced to Ct 1 Simple Assault; 180 days in jail, execution of sentence suspended (ESS) to all but 10 days in jail, and Ct 2: Attempted Possession of a Prohibited Weapon; 60 days in jail, ESS to all but 10 days in jail. The sentences were consecutive, which total 20 days. The computation was performed on the date (10/22/10). The examiner applied the arrest and Court Release dates of 05/07/2010 to 05/08/2010, which produced the Release Date of 10/09/2010 (Saturday). With the Public Law made his release date of 10/08/2010. I found that the days between his commitment to the DC Jail and the day before his sentence weren't included in the computation. To make sure I had not missed anything I reviewed the Judgment & Commitment to see if the judgment may have stipulated that days before his sentence would not be included in his time detained, but did not find it. After a quick assessment of his computation I began notification. September 20, 2010, [REDACTED] was committed to DC Jail with a Commitment Pending Disposition to case number [REDACTED].</p>		Pending

				<p>the charge of Simple Assault, with no bond.</p>	
3-Dec-10	35 day(s)			<p>On December 3, 2010 record office received a faxed J&C dated 10/29/10 from Fairview halfway house. Examiner in the record office spoke with a staff member from Fairview and they indicated that they fax the J&C to the record office because the inmate believed he should have been released. It appears that on October 29, 2010 inmate was sentenced in criminal case to 180 days incarceration execution of sentence is suspended as to all but 80 days to be served in a halfway house with credit for time served. Inmate was on the PTR for court appearance however, since inmate is housed at the halfway he would have appeared in court from the halfway. When record office received the fax judgment and commitment, inmate's sentence computation was immediately computed and staff arrived at a projected release date of October 29, 2010. Therefore inmate was released 35 days late from custody on December 3, 2010.</p>	Pending

Late Release Date	# of Days Late	DCDC#	Inmate's Name	Reason for Over Detention	Disciplinary Action
1/24/2011	35 day(s)	[REDACTED]	[REDACTED]	<p>Inmate was committed to the D.C. Department of Corrections on November 13, 2010 in criminal case [REDACTED] charged with Sexual Solicitation. On November 17, 2010 inmate appeared in D.C. Superior Court in criminal case [REDACTED] and was issued work release order. On November 23, 2010 inmate was transferred to Fairview Halfway House. On December 20, 2010, inmate [REDACTED] appeared in D.C. Superior Court in criminal case [REDACTED] and was sentenced to 30 days in the halfway house, which record office did not receive the judgment and commitment. On January 24, 2011 record office received a telephone call in reference to inmate [REDACTED] in the HWH. Staff retrieved inmate's file and reviewed it and determined that we had not received a J&C. Staff printed the J&C from court view and immediately began inmate's computation. Inmate's computation was computed and a projected release date of December 20, 2010 was established. Inmate was processed and released on 1/24/11, 35 days late.</p>	<p>Letter of Counseling issued. Re-iterating process that was in place for inmates' that are housed at the HWH.</p>

**Attachment
DOC Response to Q#14**

Number	Name	RELEASE AUTHORITY	RELEASE CUSTODY	RELEASED FROM	RELDATE & TIME	RELEASE HOUR	RELEASE TYPE	SEX	Type of Transport Offered Inmate
1		USDC	OTHER	CTF	3/1/10 12:00 AM	0	EXPIRATION	F	Yellow Cab Fare
2		DCSC	SELF	CDF	7/9/10 10:36 PM	22	CASH BOND	F	Metro Fare Card
3		DCSC	SELF	CDF	7/19/10 10:59 PM	22	CASH COLLATERAL	F	Metro Fare Card
4		DCSC	SELF	CDF	4/27/10 10:54 PM	22	COURT ORDERED RELEASE - CDF	F	Metro Fare Card
5		DCSC	SELF	CDF	5/3/10 10:22 PM	22	COURT ORDERED RELEASE - CDF	F	Metro Fare Card
6		DCSC	SELF	CDF	5/8/10 11:03 PM	23	COURT ORDERED RELEASE - CDF	F	Metro Fare Card
7		DCSC	SELF	CDF	6/10/10 11:11 PM	23	COURT ORDERED RELEASE - CDF	F	Metro Fare Card
8		USDC	SELF	CDF	6/18/10 11:15 PM	23	COURT ORDERED RELEASE - CDF	F	Metro Fare Card
9		DCSC	SELF	CDF	8/10/10 10:27 PM	22	COURT ORDERED RELEASE - CDF	F	Metro Fare Card
10		DCSC	SELF	CDF	9/17/10 10:23 PM	22	COURT ORDERED RELEASE - CDF	F	Metro Fare Card
11		USDC	SELF	CDF	9/20/10 10:07 PM	22	COURT ORDERED RELEASE - CDF	F	Metro Fare Card
12		DCSC	SELF	CDF	9/23/10 10:37 PM	22	COURT ORDERED RELEASE - CDF	F	Metro Fare Card
13		DCSC	SELF	CDF	10/20/10 10:45 PM	22	COURT ORDERED RELEASE - CDF	F	Metro Fare Card
14		DCSC	SELF	CDF	10/23/10 11:28 PM	23	COURT ORDERED RELEASE - CDF	F	Metro Fare Card
15		DCSC	SELF	CDF	11/16/10 10:52 PM	22	COURT ORDERED RELEASE - CDF	F	Metro Fare Card
16		USDC	SELF	CDF	12/15/10 10:05 PM	22	COURT ORDERED RELEASE - CDF	F	Metro Fare Card
17		DCSC	SELF	MHU	4/12/10 10:08 PM	22	COURT ORDERED RELEASE - MHU	F	Metro Fare Card
18		DCSC	SELF	MHU	4/12/10 10:09 PM	22	COURT ORDERED RELEASE - MHU	F	Metro Fare Card
19		DCSC	SELF	MHU	4/12/10 10:43 PM	22	COURT ORDERED RELEASE - MHU	F	Metro Fare Card
20		DCSC	SELF	MHU	6/25/10 10:17 PM	22	COURT ORDERED RELEASE - MHU	F	Metro Fare Card
21		DCSC	SELF	MHU	6/25/10 10:25 PM	22	COURT ORDERED RELEASE - MHU	F	Metro Fare Card
22		DCSC	SELF	MHU	6/25/10 10:35 PM	22	COURT ORDERED RELEASE - MHU	F	Metro Fare Card
23		DCSC	SELF	CDF	3/2/10 6:54 AM	6	EXPIRATION	F	Metro Fare Card
24		DCSC	SELF	CDF	3/3/10 6:42 AM	6	EXPIRATION	F	Metro Fare Card
25		DCSC	SELF	CDF	3/3/10 6:45 AM	6	EXPIRATION	F	Metro Fare Card
26		DCSC	SELF	CDF	3/3/10 6:47 AM	6	EXPIRATION	F	Metro Fare Card
27		DCSC	SELF	CDF	3/8/10 6:36 AM	6	EXPIRATION	F	Metro Fare Card
28		DCSC	SELF	CDF	3/12/10 11:16 PM	23	EXPIRATION	F	Metro Fare Card
29		DCSC	SELF	CDF	3/18/10 10:08 PM	22	EXPIRATION	F	Metro Fare Card
30		DCSC	SELF	CDF	3/25/10 6:07 AM	6	EXPIRATION	F	Metro Fare Card
31		DCSC	SELF	CDF	3/25/10 10:52 PM	22	EXPIRATION	F	Metro Fare Card
32		DCSC	SELF	CDF	3/30/10 6:52 AM	6	EXPIRATION	F	Metro Fare Card
33		DCSC	SELF	CDF	3/31/10 6:54 AM	6	EXPIRATION	F	Metro Fare Card
34		DCSC	SELF	CDF	4/7/10 6:55 AM	6	EXPIRATION	F	Metro Fare Card
35		DCSC	SELF	CDF	4/8/10 6:48 AM	6	EXPIRATION	F	Metro Fare Card
36		DCSC	SELF	CDF	4/15/10 11:27 PM	23	EXPIRATION	F	Metro Fare Card
37		DCSC	SELF	CDF	4/19/10 6:46 AM	6	EXPIRATION	F	Metro Fare Card
38		DCSC	SELF	CDF	4/23/10 6:44 AM	6	EXPIRATION	F	Metro Fare Card
39		FBOP	SELF	CDF	4/23/10 6:48 AM	6	EXPIRATION	F	Metro Fare Card
40		DCSC	SELF	CDF	4/26/10 6:38 AM	6	EXPIRATION	F	Metro Fare Card
41		DCSC	SELF	CDF	4/27/10 6:53 AM	6	EXPIRATION	F	Metro Fare Card
42		DCSC	SELF	CDF	4/29/10 10:06 PM	22	EXPIRATION	F	Metro Fare Card
43		DCSC	SELF	CDF	4/30/10 6:43 AM	6	EXPIRATION	F	Metro Fare Card
44		DCSC	SELF	CDF	4/30/10 6:45 AM	6	EXPIRATION	F	Metro Fare Card

**Attachment
DOC Response to Q#14**

Number	Name	RELEASE AUTHORITY	RELEASE CUSTODY	RELEASED FROM	RELDATE & TIME	RELEASE HOUR	RELEASE TYPE	SEX	Type of Transport Offered Inmate
45		DCSC	SELF	CDF	5/2/10 6:58 AM	6	EXPIRATION	F	Metro Fare Card
46		DCSC	SELF	CDF	5/3/10 6:33 AM	6	EXPIRATION	F	Metro Fare Card
47		DCSC	SELF	CDF	5/7/10 6:54 AM	6	EXPIRATION	F	Metro Fare Card
48		DCSC	SELF	CDF	5/7/10 6:56 AM	6	EXPIRATION	F	Metro Fare Card
49		FBOP	SELF	CDF	5/7/10 6:58 AM	6	EXPIRATION	F	Metro Fare Card
50		DCSC	SELF	CDF	5/14/10 6:59 AM	6	EXPIRATION	F	Metro Fare Card
51		DCSC	SELF	CDF	5/20/10 6:51 AM	6	EXPIRATION	F	Metro Fare Card
52		DCSC	SELF	CDF	5/26/10 6:49 AM	6	EXPIRATION	F	Metro Fare Card
53		DCSC	SELF	CDF	6/1/10 5:50 AM	5	EXPIRATION	F	Metro Fare Card
54		DCSC	SELF	CDF	6/2/10 10:07 PM	22	EXPIRATION	F	Metro Fare Card
55		DCSC	SELF	CDF	6/7/10 10:23 PM	22	EXPIRATION	F	Metro Fare Card
56		DCSC	SELF	CDF	6/13/10 6:38 AM	6	EXPIRATION	F	Metro Fare Card
57		DCSC	SELF	CDF	6/17/10 10:44 PM	22	EXPIRATION	F	Metro Fare Card
58		DCSC	SELF	CDF	6/18/10 11:49 PM	23	EXPIRATION	F	Metro Fare Card
59		DCSC	SELF	CDF	6/25/10 10:02 PM	22	EXPIRATION	F	Metro Fare Card
60		DCSC	SELF	CDF	6/25/10 10:10 PM	22	EXPIRATION	F	Metro Fare Card
61		FBOP	SELF	CDF	6/29/10 6:54 AM	6	EXPIRATION	F	Metro Fare Card
62		DCSC	SELF	CDF	6/29/10 6:56 AM	6	EXPIRATION	F	Metro Fare Card
63		DCSC	SELF	CDF	7/1/10 6:58 AM	6	EXPIRATION	F	Metro Fare Card
64		DCSC	SELF	CDF	7/1/10 6:59 AM	6	EXPIRATION	F	Metro Fare Card
65		DCSC	SELF	CDF	7/2/10 6:53 AM	6	EXPIRATION	F	Metro Fare Card
66		DCSC	SELF	CDF	7/3/10 6:47 AM	6	EXPIRATION	F	Metro Fare Card
67		DCSC	SELF	CDF	7/6/10 6:57 AM	6	EXPIRATION	F	Metro Fare Card
68		DCSC	SELF	CDF	7/6/10 6:59 AM	6	EXPIRATION	F	Metro Fare Card
69		DCSC	SELF	CDF	7/8/10 6:29 AM	6	EXPIRATION	F	Metro Fare Card
70		FBOP	SELF	CDF	7/8/10 10:00 PM	22	EXPIRATION	F	Metro Fare Card
71		FBOP	SELF	CDF	7/8/10 10:06 PM	22	EXPIRATION	F	Metro Fare Card
72		DCSC	SELF	CDF	7/11/10 5:26 AM	5	EXPIRATION	F	Metro Fare Card
73		DCSC	SELF	CDF	7/12/10 11:54 PM	23	EXPIRATION	F	Metro Fare Card
74		DCSC	SELF	CDF	7/16/10 6:56 AM	6	EXPIRATION	F	Metro Fare Card
75		FBOP	SELF	CDF	7/16/10 6:58 AM	6	EXPIRATION	F	Metro Fare Card
76		DCSC	SELF	CDF	7/22/10 6:52 AM	6	EXPIRATION	F	Metro Fare Card
77		DCSC	SELF	CDF	7/22/10 6:55 AM	6	EXPIRATION	F	Metro Fare Card
78		DCSC	SELF	CDF	7/26/10 10:54 PM	22	EXPIRATION	F	Metro Fare Card
79		DCSC	SELF	CDF	7/29/10 6:38 AM	6	EXPIRATION	F	Metro Fare Card
80		FBOP	SELF	CDF	7/29/10 6:40 AM	6	EXPIRATION	F	Metro Fare Card
81		DCSC	SELF	CDF	8/5/10 6:50 AM	6	EXPIRATION	F	Metro Fare Card
82		DCSC	SELF	CDF	8/10/10 6:50 AM	6	EXPIRATION	F	Metro Fare Card
83		DCSC	SELF	CDF	8/12/10 6:54 AM	6	EXPIRATION	F	Metro Fare Card
84		DCSC	SELF	CDF	8/12/10 6:59 AM	6	EXPIRATION	F	Metro Fare Card
85		DCSC	SELF	CDF	8/19/10 6:41 AM	6	EXPIRATION	F	Metro Fare Card
86		DCSC	SELF	CDF	8/19/10 6:42 AM	6	EXPIRATION	F	Metro Fare Card
87		DCSC	SELF	CDF	8/25/10 6:58 AM	6	EXPIRATION	F	Metro Fare Card
88		DCSC	SELF	CDF	8/25/10 6:59 AM	6	EXPIRATION	F	Metro Fare Card

**Attachment
DOC Response to Q#14**

Number	Name	RELEASE AUTHORITY	RELEASE CUSTODY	RELEASED FROM	RELDATE & TIME	RELEASE HOUR	RELEASE TYPE	SEX	Type of Transport Offered Inmate
89		DCSC	SELF	CDF	8/26/10 10:43 PM	22	EXPIRATION	F	Metro Fare Card
90		DCSC	SELF	CDF	8/27/10 10:55 PM	22	EXPIRATION	F	Metro Fare Card
91		DCSC	SELF	CDF	8/30/10 6:49 AM	6	EXPIRATION	F	Metro Fare Card
92		DCSC	SELF	CDF	9/1/10 6:42 AM	6	EXPIRATION	F	Metro Fare Card
93		DCSC	SELF	CDF	9/7/10 6:56 AM	6	EXPIRATION	F	Metro Fare Card
94		DCSC	SELF	CDF	9/9/10 6:37 AM	6	EXPIRATION	F	Metro Fare Card
95		FBOP	SELF	CDF	9/9/10 6:38 AM	6	EXPIRATION	F	Metro Fare Card
96		DCSC	SELF	CDF	9/15/10 6:47 AM	6	EXPIRATION	F	Metro Fare Card
97		DCSC	SELF	CDF	9/15/10 10:57 PM	22	EXPIRATION	F	Metro Fare Card
98		DCSC	SELF	CDF	9/20/10 6:33 AM	6	EXPIRATION	F	Metro Fare Card
99		DCSC	SELF	CDF	9/20/10 6:38 AM	6	EXPIRATION	F	Metro Fare Card
100		DCSC	SELF	CDF	9/28/10 6:56 AM	6	EXPIRATION	F	Metro Fare Card
101		DCSC	SELF	CDF	9/28/10 10:34 PM	22	EXPIRATION	F	Metro Fare Card
102		DCSC	SELF	CDF	9/30/10 11:07 PM	23	EXPIRATION	F	Metro Fare Card
103		FBOP	SELF	CDF	9/30/10 11:09 PM	23	EXPIRATION	F	Metro Fare Card
104		DCSC	SELF	CDF	10/5/10 6:57 AM	6	EXPIRATION	F	Metro Fare Card
105		DCSC	SELF	CDF	10/5/10 6:58 AM	6	EXPIRATION	F	Metro Fare Card
106		DCSC	SELF	CDF	10/5/10 10:02 PM	22	EXPIRATION	F	Metro Fare Card
107		FBOP	SELF	CDF	10/8/10 6:58 AM	6	EXPIRATION	F	Metro Fare Card
108		DCSC	SELF	CDF	10/9/10 6:10 AM	6	EXPIRATION	F	Metro Fare Card
109		DCSC	SELF	CDF	10/13/10 11:11 PM	23	EXPIRATION	F	Metro Fare Card
110		DCSC	SELF	CDF	10/18/10 6:53 AM	6	EXPIRATION	F	Metro Fare Card
111		DCSC	SELF	CDF	10/19/10 6:48 AM	6	EXPIRATION	F	Metro Fare Card
112		DCSC	SELF	CDF	10/19/10 6:49 AM	6	EXPIRATION	F	Metro Fare Card
113		DCSC	SELF	CDF	10/29/10 6:53 AM	6	EXPIRATION	F	Metro Fare Card
114		DCSC	SELF	CDF	11/1/10 6:09 AM	6	EXPIRATION	F	Metro Fare Card
115		FBOP	SELF	CDF	11/3/10 6:54 AM	6	EXPIRATION	F	Metro Fare Card
116		DCSC	SELF	CDF	11/5/10 6:43 AM	6	EXPIRATION	F	Metro Fare Card
117		DCSC	SELF	CDF	11/5/10 6:43 AM	6	EXPIRATION	F	Metro Fare Card
118		DCSC	SELF	CDF	11/17/10 10:25 PM	22	EXPIRATION	F	Metro Fare Card
119		DCSC	SELF	CDF	11/18/10 11:29 PM	23	EXPIRATION	F	Metro Fare Card
120		DCSC	SELF	CDF	11/23/10 6:45 AM	6	EXPIRATION	F	Metro Fare Card
121		DCSC	SELF	CDF	11/23/10 6:46 AM	6	EXPIRATION	F	Metro Fare Card
122		FBOP	SELF	CDF	11/26/10 6:28 AM	6	EXPIRATION	F	Metro Fare Card
123		DCSC	SELF	CDF	11/26/10 6:32 AM	6	EXPIRATION	F	Metro Fare Card
124		DCSC	SELF	CDF	12/13/10 6:31 AM	6	EXPIRATION	F	Metro Fare Card
125		DCSC	SELF	CDF	12/16/10 10:35 PM	22	EXPIRATION	F	Metro Fare Card
126		DCSC	SELF	CDF	1/3/11 6:55 AM	6	EXPIRATION	F	Metro Fare Card
127		DCSC	SELF	CDF	2/1/11 6:32 AM	6	EXPIRATION	F	Metro Fare Card
128		DCSC	SELF	CDF	2/1/11 6:44 AM	6	EXPIRATION	F	Metro Fare Card
129		DCSC	OTHER	CDF	5/11/10 6:56 AM	6	FUGITIVE WAIVER	F	Metro Fare Card
130		USPC	SELF	CDF	8/10/10 10:29 PM	22	OTHER	F	Metro Fare Card
131		DCSC	SELF	CDF	8/23/10 10:55 PM	22	OTHER	F	Metro Fare Card
132		FBOP	SELF	CDF	7/23/10 6:55 AM	6	PAROLE	F	Metro Fare Card

**Attachment
DOC Response to Q#14**

Number	Name	RELEASE AUTHORITY	RELEASE CUSTODY	RELEASED FROM	RELDATE & TIME	RELEASE HOUR	RELEASE TYPE	SEX	Type of Transport Offered Inmate
133		DCSC	SELF	CDF	3/5/10 6:58 AM	6	SANCTION	F	Metro Fare Card
134		DCSC	SELF	CDF	3/6/10 6:57 AM	6	SANCTION	F	Metro Fare Card
135		DCSC	SELF	CDF	3/8/10 5:45 AM	5	SANCTION	F	Metro Fare Card
136		DCSC	SELF	CDF	3/8/10 6:57 AM	6	SANCTION	F	Metro Fare Card
137		DCSC	SELF	CDF	3/10/10 6:59 AM	6	SANCTION	F	Metro Fare Card
138		DCSC	SELF	CDF	3/15/10 6:18 AM	6	SANCTION	F	Metro Fare Card
139		DCSC	SELF	CDF	3/15/10 6:18 AM	6	SANCTION	F	Metro Fare Card
140		DCSC	SELF	CDF	3/30/10 6:51 AM	6	SANCTION	F	Metro Fare Card
141		DCSC	SELF	CDF	4/1/10 6:51 AM	6	SANCTION	F	Metro Fare Card
142		DCSC	SELF	CDF	4/6/10 6:59 AM	6	SANCTION	F	Metro Fare Card
143		DCSC	SELF	CDF	4/26/10 5:44 AM	5	SANCTION	F	Metro Fare Card
144		DCSC	SELF	CDF	5/2/10 6:57 AM	6	SANCTION	F	Metro Fare Card
145		DCSC	SELF	CDF	5/3/10 5:31 AM	5	SANCTION	F	Metro Fare Card
146		DCSC	SELF	CDF	5/3/10 5:32 AM	5	SANCTION	F	Metro Fare Card
147		DCSC	SELF	CDF	5/8/10 6:58 AM	6	SANCTION	F	Metro Fare Card
148		DCSC	SELF	CDF	5/17/10 6:50 AM	6	SANCTION	F	Metro Fare Card
149		DCSC	SELF	CDF	5/17/10 6:51 AM	6	SANCTION	F	Metro Fare Card
150		DCSC	SELF	CDF	5/17/10 6:52 AM	6	SANCTION	F	Metro Fare Card
151		DCSC	SELF	CDF	5/17/10 6:53 AM	6	SANCTION	F	Metro Fare Card
152		DCSC	SELF	CDF	5/22/10 6:59 AM	6	SANCTION	F	Metro Fare Card
153		DCSC	SELF	CDF	5/24/10 6:59 AM	6	SANCTION	F	Metro Fare Card
154		DCSC	SELF	CDF	5/25/10 6:54 AM	6	SANCTION	F	Metro Fare Card
155		DCSC	SELF	CDF	5/25/10 6:58 AM	6	SANCTION	F	Metro Fare Card
156		DCSC	SELF	CDF	5/31/10 6:57 AM	6	SANCTION	F	Metro Fare Card
157		DCSC	SELF	CDF	5/31/10 6:58 AM	6	SANCTION	F	Metro Fare Card
158		DCSC	SELF	CDF	6/1/10 5:29 AM	5	SANCTION	F	Metro Fare Card
159		DCSC	SELF	CDF	6/1/10 6:59 AM	6	SANCTION	F	Metro Fare Card
160		DCSC	SELF	CDF	6/8/10 6:55 AM	6	SANCTION	F	Metro Fare Card
161		DCSC	SELF	CDF	6/10/10 6:54 AM	6	SANCTION	F	Metro Fare Card
162		DCSC	SELF	CDF	6/14/10 5:43 AM	5	SANCTION	F	Metro Fare Card
163		DCSC	SELF	CDF	6/14/10 6:56 AM	6	SANCTION	F	Metro Fare Card
164		DCSC	SELF	CDF	6/14/10 6:57 AM	6	SANCTION	F	Metro Fare Card
165		DCSC	SELF	CDF	7/23/10 6:57 AM	6	SANCTION	F	Metro Fare Card
166		DCSC	SELF	CDF	8/12/10 6:50 AM	6	SANCTION	F	Metro Fare Card
167		DCSC	SELF	CDF	8/16/10 6:57 AM	6	SANCTION	F	Metro Fare Card
168		DCSC	SELF	CDF	8/24/10 6:57 AM	6	SANCTION	F	Metro Fare Card
169		DCSC	SELF	CDF	10/18/10 6:57 AM	6	SANCTION	F	Metro Fare Card
170		DCSC	SELF	CDF	10/25/10 4:59 AM	4	SANCTION	F	Yellow Cab Fare
171		DCSC	SELF	CDF	10/25/10 6:59 AM	6	SANCTION	F	Metro Fare Card
172		DCSC	SELF	CDF	11/1/10 5:05 AM	5	SANCTION	F	Metro Fare Card
173		DCSC	SELF	CDF	11/8/10 6:27 AM	6	SANCTION	F	Metro Fare Card
174		DCSC	SELF	CDF	11/11/10 6:59 AM	6	SANCTION	F	Metro Fare Card
175		DCSC	SELF	CDF	11/13/10 6:59 AM	6	SANCTION	F	Metro Fare Card
176		DCSC	SELF	CDF	11/22/10 6:38 AM	6	SANCTION	F	Metro Fare Card

**Attachment
DOC Response to Q#14**

Number	Name	RELEASE AUTHORITY	RELEASE CUSTODY	RELEASED FROM	RELDATE & TIME	RELEASE HOUR	RELEASE TYPE	SEX	Type of Transport Offered Inmate
177		DCSC	SELF	CDF	11/22/10 6:59 AM	6	SANCTION	F	Metro Fare Card
178		DCSC	SELF	CDF	12/2/10 6:59 AM	6	SANCTION	F	Metro Fare Card
179		DCSC	SELF	CDF	12/2/10 6:59 AM	6	SANCTION	F	Metro Fare Card
180		DCSC	SELF	CDF	12/13/10 5:20 AM	5	SANCTION	F	Metro Fare Card
181		DCSC	SELF	CDF	12/20/10 5:18 AM	5	SANCTION	F	Metro Fare Card
182		DCSC	SELF	CDF	12/20/10 5:19 AM	5	SANCTION	F	Metro Fare Card
183		DCSC	SELF	CDF	2/23/11 6:57 AM	6	SANCTION	F	Metro Fare Card
184		DCSC	SELF	CDF	2/28/11 5:36 AM	5	SANCTION	F	Metro Fare Card
185		DCSC	SELF	CDF	6/14/10 11:15 PM	23	TIME SERVED OR SUSPENDED	F	Metro Fare Card
186		DCSC	SELF	CDF	8/23/10 10:54 PM	22	TIME SERVED OR SUSPENDED	F	Metro Fare Card
187		DCSC	SELF	CDF	3/14/10 6:55 AM	6	WEEKENDER EXPIRATION	F	Metro Fare Card
188		DCSC	SELF	CDF	4/18/10 11:22 PM	23	WEEKENDER EXPIRATION	F	Metro Fare Card
189		DCSC	SELF	CDF	11/5/10 11:02 PM	23	WEEKENDER EXPIRATION	F	Metro Fare Card
190		DCSC	SELF	CDF	2/7/11 6:21 AM	6	WEEKENDER EXPIRATION	F	Metro Fare Card
191		USDC	OTHER	CTF	3/1/10 12:00 AM	0	OTHER	M	Yellow Cab Fare
192		DCSC	SELF	CDF	4/13/10 10:22 PM	22	CASH BOND	M	Metro Fare Card
193		DCSC	SELF	CDF	5/11/10 10:11 PM	22	CASH BOND	M	Metro Fare Card
194		DCSC	SELF	CDF	6/23/10 10:54 PM	22	CASH BOND	M	Metro Fare Card
195		DCSC	SELF	CDF	7/7/10 10:20 PM	22	CASH BOND	M	Metro Fare Card
196		DCSC	SELF	CDF	7/7/10 10:27 PM	22	CASH BOND	M	Metro Fare Card
197		DCSC	SELF	CDF	7/12/10 10:14 PM	22	CASH BOND	M	Metro Fare Card
198		DCSC	SELF	CDF	7/26/10 11:04 PM	23	CASH BOND	M	Metro Fare Card
199		DCSC	SELF	CDF	8/28/10 11:28 PM	23	CASH BOND	M	Metro Fare Card
200		DCSC	SELF	CDF	10/16/10 10:21 PM	22	CASH BOND	M	Metro Fare Card
201		DCSC	SELF	CDF	10/19/10 10:47 PM	22	CASH BOND	M	Metro Fare Card
202		DCSC	SELF	CDF	10/22/10 11:23 PM	23	CASH BOND	M	Metro Fare Card
203		DCSC	SELF	CDF	10/28/10 10:12 PM	22	CASH BOND	M	Metro Fare Card
204		DCSC	SELF	CDF	11/5/10 10:03 PM	22	CASH BOND	M	Metro Fare Card
205		DCSC	SELF	CDF	11/12/10 10:02 PM	22	CASH BOND	M	Metro Fare Card
206		DCSC	SELF	CDF	11/22/10 10:58 PM	22	CASH BOND	M	Metro Fare Card
207		DCSC	SELF	CDF	3/10/10 10:08 PM	22	CASH COLLATERAL	M	Metro Fare Card
208		DCSC	SELF	CDF	3/10/10 10:19 PM	22	CASH COLLATERAL	M	Metro Fare Card
209		DCSC	SELF	CDF	3/26/10 2:02 AM	2	CASH COLLATERAL	M	Yellow Cab Fare
210		DCSC	SELF	CDF	5/10/10 11:08 PM	23	CASH COLLATERAL	M	Metro Fare Card
211		DCSC	SELF	CDF	5/13/10 10:41 PM	22	CASH COLLATERAL	M	Metro Fare Card
212		DCSC	SELF	CDF	6/21/10 11:42 PM	23	CASH COLLATERAL	M	Metro Fare Card
213		DCSC	SELF	CDF	6/25/10 11:50 PM	23	CASH COLLATERAL	M	Metro Fare Card
214		DCSC	SELF	CDF	7/26/10 10:08 PM	22	CASH COLLATERAL	M	Metro Fare Card
215		DCSC	SELF	CDF	8/10/10 10:19 PM	22	CASH COLLATERAL	M	Metro Fare Card
216		DCSC	OTHER	CDF	10/1/10 10:31 PM	22	CASH COLLATERAL	M	Metro Fare Card
217		DCSC	SELF	CDF	3/1/10 6:09 AM	6	COURT ORDERED RELEASE - CDF	M	Metro Fare Card
218		DCSC	SELF	CDF	3/4/10 10:38 PM	22	COURT ORDERED RELEASE - CDF	M	Metro Fare Card
219		DCSC	OTHER	CDF	3/4/10 11:45 PM	23	COURT ORDERED RELEASE - CDF	M	Metro Fare Card
220		DCSC	OTHER	CDF	3/12/10 10:27 PM	22	COURT ORDERED RELEASE - CDF	M	Metro Fare Card

**Attachment
DOC Response to Q#14**

Number	Name	RELEASE AUTHORITY	RELEASE CUSTODY	RELEASED FROM	RELDATE & TIME	RELEASE HOUR	RELEASE TYPE	SEX	Type of Transport Offered Inmate
221		DCSC	SELF	CDF	3/17/10 10:46 PM	22	COURT ORDERED RELEASE - CDF	M	Metro Fare Card
222		DCSC	SELF	CDF	3/23/10 11:05 PM	23	COURT ORDERED RELEASE - CDF	M	Metro Fare Card
223		USDC	SELF	CDF	3/25/10 10:29 PM	22	COURT ORDERED RELEASE - CDF	M	Metro Fare Card
224		DCSC	OTHER	CDF	3/25/10 11:26 PM	23	COURT ORDERED RELEASE - CDF	M	Metro Fare Card
225		DCSC	SELF	CDF	3/26/10 10:19 PM	22	COURT ORDERED RELEASE - CDF	M	Metro Fare Card
226		DCSC	SELF	CDF	3/30/10 1:24 AM	1	COURT ORDERED RELEASE - CDF	M	Yellow Cab Fare
227		DCSC	SELF	CDF	3/30/10 1:25 AM	1	COURT ORDERED RELEASE - CDF	M	Yellow Cab Fare
228		DCSC	OTHER	CDF	4/1/10 10:18 PM	22	COURT ORDERED RELEASE - CDF	M	Metro Fare Card
229		DCSC	OTHER	CDF	4/5/10 10:01 PM	22	COURT ORDERED RELEASE - CDF	M	Metro Fare Card
230		DCSC	SELF	CDF	4/9/10 10:04 PM	22	COURT ORDERED RELEASE - CDF	M	Metro Fare Card
231		DCSC	SELF	CDF	4/9/10 10:05 PM	22	COURT ORDERED RELEASE - CDF	M	Metro Fare Card
232		DCSC	SELF	CDF	4/9/10 10:41 PM	22	COURT ORDERED RELEASE - CDF	M	Metro Fare Card
233		DCSC	SELF	CDF	4/10/10 1:46 AM	1	COURT ORDERED RELEASE - CDF	M	Yellow Cab Fare
234		DCSC	SELF	CDF	4/10/10 1:55 AM	1	COURT ORDERED RELEASE - CDF	M	Yellow Cab Fare
235		DCSC	SELF	CDF	4/10/10 2:01 AM	2	COURT ORDERED RELEASE - CDF	M	Yellow Cab Fare
236		DCSC	SELF	CDF	4/12/10 11:48 PM	23	COURT ORDERED RELEASE - CDF	M	Metro Fare Card
237		DCSC	SELF	CDF	4/15/10 10:06 PM	22	COURT ORDERED RELEASE - CDF	M	Metro Fare Card
238		DCSC	SELF	CDF	4/19/10 10:29 PM	22	COURT ORDERED RELEASE - CDF	M	Metro Fare Card
239		USPC	SELF	CDF	4/19/10 10:48 PM	22	COURT ORDERED RELEASE - CDF	M	Metro Fare Card
240		DCSC	SELF	CDF	4/20/10 10:26 PM	22	COURT ORDERED RELEASE - CDF	M	Metro Fare Card
241		DCSC	SELF	CDF	4/20/10 10:27 PM	22	COURT ORDERED RELEASE - CDF	M	Metro Fare Card
242		DCSC	SELF	CDF	4/26/10 10:42 PM	22	COURT ORDERED RELEASE - CDF	M	Metro Fare Card
243		DCSC	SELF	CDF	4/30/10 10:56 PM	22	COURT ORDERED RELEASE - CDF	M	Metro Fare Card
244		DCSC	SELF	CDF	5/4/10 11:18 PM	23	COURT ORDERED RELEASE - CDF	M	Metro Fare Card
245		DCSC	SELF	CDF	5/8/10 11:10 PM	23	COURT ORDERED RELEASE - CDF	M	Metro Fare Card
246		DCSC	SELF	CDF	5/10/10 11:34 PM	23	COURT ORDERED RELEASE - CDF	M	Metro Fare Card
247		DCSC	SELF	CDF	5/12/10 11:07 PM	23	COURT ORDERED RELEASE - CDF	M	Metro Fare Card
248		DCSC	SELF	CDF	5/13/10 10:22 PM	22	COURT ORDERED RELEASE - CDF	M	Metro Fare Card
249		DCSC	OTHER	CDF	5/13/10 10:31 PM	22	COURT ORDERED RELEASE - CDF	M	Metro Fare Card
250		DCSC	OTHER	CDF	5/13/10 10:32 PM	22	COURT ORDERED RELEASE - CDF	M	Metro Fare Card
251		DCSC	SELF	CDF	5/13/10 11:03 PM	23	COURT ORDERED RELEASE - CDF	M	Metro Fare Card
252		DCSC	SELF	CDF	5/20/10 11:10 PM	23	COURT ORDERED RELEASE - CDF	M	Metro Fare Card
253		DCSC	SELF	CDF	5/24/10 10:32 PM	22	COURT ORDERED RELEASE - CDF	M	Metro Fare Card
254		DCSC	SELF	CDF	5/25/10 10:25 PM	22	COURT ORDERED RELEASE - CDF	M	Metro Fare Card
255		DCSC	SELF	CDF	5/26/10 10:18 PM	22	COURT ORDERED RELEASE - CDF	M	Metro Fare Card
256		DCSC	SELF	CDF	5/28/10 10:37 PM	22	COURT ORDERED RELEASE - CDF	M	Metro Fare Card
257		DCSC	OTHER	CDF	6/4/10 10:15 PM	22	COURT ORDERED RELEASE - CDF	M	Metro Fare Card
258		DCSC	SELF	CDF	6/9/10 10:28 PM	22	COURT ORDERED RELEASE - CDF	M	Metro Fare Card
259		DCSC	SELF	CDF	6/10/10 10:10 PM	22	COURT ORDERED RELEASE - CDF	M	Metro Fare Card
260		USDC	OTHER	CDF	6/14/10 6:46 AM	6	COURT ORDERED RELEASE - CDF	M	Metro Fare Card
261		DCSC	SELF	CDF	6/17/10 12:29 AM	0	COURT ORDERED RELEASE - CDF	M	Yellow Cab Fare
262		DCSC	OTHER	CDF	6/17/10 10:09 PM	22	COURT ORDERED RELEASE - CDF	M	Metro Fare Card
263		USDC	SELF	CDF	6/18/10 11:37 PM	23	COURT ORDERED RELEASE - CDF	M	Metro Fare Card
264		DCSC	SELF	CDF	6/21/10 11:44 PM	23	COURT ORDERED RELEASE - CDF	M	Metro Fare Card

**Attachment
DOC Response to Q#14**

Number	Name	RELEASE AUTHORITY	RELEASE CUSTODY	RELEASED FROM	RELDATE & TIME	RELEASE HOUR	RELEASE TYPE	SEX	Type of Transport Offered Inmate
265		DCSC	SELF	CDF	6/26/10 4:56 AM	4	COURT ORDERED RELEASE - CDF	M	Yellow Cab Fare
266		DCSC	SELF	CDF	6/26/10 11:18 PM	23	COURT ORDERED RELEASE - CDF	M	Metro Fare Card
267		DCSC	SELF	CDF	7/2/10 11:21 PM	23	COURT ORDERED RELEASE - CDF	M	Metro Fare Card
268		DCSC	SELF	CDF	7/3/10 10:45 PM	22	COURT ORDERED RELEASE - CDF	M	Metro Fare Card
269		DCSC	SELF	CDF	7/12/10 10:54 PM	22	COURT ORDERED RELEASE - CDF	M	Metro Fare Card
270		DCSC	SELF	CDF	7/16/10 11:18 PM	23	COURT ORDERED RELEASE - CDF	M	Metro Fare Card
271		DCSC	SELF	CDF	8/7/10 10:08 PM	22	COURT ORDERED RELEASE - CDF	M	Metro Fare Card
272		DCSC	OTHER	CDF	8/10/10 10:59 PM	22	COURT ORDERED RELEASE - CDF	M	Metro Fare Card
273		DCSC	SELF	CDF	8/19/10 10:17 PM	22	COURT ORDERED RELEASE - CDF	M	Metro Fare Card
274		DCSC	OTHER	CDF	8/20/10 11:00 PM	23	COURT ORDERED RELEASE - CDF	M	Metro Fare Card
275		DCSC	SELF	CDF	8/23/10 10:35 PM	22	COURT ORDERED RELEASE - CDF	M	Metro Fare Card
276		USDC	SELF	CDF	9/3/10 10:06 PM	22	COURT ORDERED RELEASE - CDF	M	Metro Fare Card
277		USDC	SELF	CDF	9/20/10 10:05 PM	22	COURT ORDERED RELEASE - CDF	M	Metro Fare Card
278		USDC	SELF	CDF	9/20/10 10:08 PM	22	COURT ORDERED RELEASE - CDF	M	Metro Fare Card
279		DCSC	SELF	CDF	10/1/10 10:17 PM	22	COURT ORDERED RELEASE - CDF	M	Metro Fare Card
280		DCSC	SELF	CDF	10/4/10 10:30 PM	22	COURT ORDERED RELEASE - CDF	M	Metro Fare Card
281		DCSC	OTHER	CDF	10/8/10 12:20 AM	0	COURT ORDERED RELEASE - CDF	M	Yellow Cab Fare
282		USDC	SELF	CDF	10/8/10 11:02 PM	23	COURT ORDERED RELEASE - CDF	M	Metro Fare Card
283		USDC	SELF	CDF	10/8/10 11:03 PM	23	COURT ORDERED RELEASE - CDF	M	Metro Fare Card
284		DCSC	SELF	CDF	10/18/10 10:04 PM	22	COURT ORDERED RELEASE - CDF	M	Metro Fare Card
285		USDC	SELF	CDF	10/21/10 10:07 PM	22	COURT ORDERED RELEASE - CDF	M	Metro Fare Card
286		DCSC	SELF	CDF	10/22/10 10:04 PM	22	COURT ORDERED RELEASE - CDF	M	Metro Fare Card
287		DCSC	SELF	CDF	10/28/10 10:13 PM	22	COURT ORDERED RELEASE - CDF	M	Metro Fare Card
288		DCSC	SELF	CDF	10/29/10 10:08 PM	22	COURT ORDERED RELEASE - CDF	M	Metro Fare Card
289		DCSC	SELF	CDF	11/2/10 10:10 PM	22	COURT ORDERED RELEASE - CDF	M	Metro Fare Card
290		FBOP	SELF	CDF	11/3/10 11:33 PM	23	COURT ORDERED RELEASE - CDF	M	Metro Fare Card
291		DCSC	SELF	CDF	11/12/10 10:03 PM	22	COURT ORDERED RELEASE - CDF	M	Metro Fare Card
292		DCSC	SELF	CDF	11/30/10 10:14 PM	22	COURT ORDERED RELEASE - CDF	M	Metro Fare Card
293		USDC	SELF	CDF	11/30/10 11:15 PM	23	COURT ORDERED RELEASE - CDF	M	Metro Fare Card
294		DCSC	SELF	CDF	12/3/10 10:24 PM	22	COURT ORDERED RELEASE - CDF	M	Metro Fare Card
295		DCSC	SELF	CDF	12/3/10 10:24 PM	22	COURT ORDERED RELEASE - CDF	M	Metro Fare Card
296		DCSC	SELF	CDF	12/3/10 10:28 PM	22	COURT ORDERED RELEASE - CDF	M	Metro Fare Card
297		USDC	SELF	CDF	12/6/10 10:48 PM	22	COURT ORDERED RELEASE - CDF	M	Metro Fare Card
298		DCSC	SELF	CDF	12/15/10 12:06 AM	0	COURT ORDERED RELEASE - CDF	M	Yellow Cab Fare
299		DCSC	SELF	CDF	12/18/10 10:28 PM	22	COURT ORDERED RELEASE - CDF	M	Metro Fare Card
300		DCSC	SELF	CDF	12/18/10 10:43 PM	22	COURT ORDERED RELEASE - CDF	M	Metro Fare Card
301		DCSC	SELF	CDF	12/18/10 11:51 PM	23	COURT ORDERED RELEASE - CDF	M	Metro Fare Card
302		USDC	SELF	CDF	1/18/11 10:07 PM	22	COURT ORDERED RELEASE - CDF	M	Metro Fare Card
303		DCSC	SELF	CDF	5/11/10 1:47 AM	1	COURT ORDERED RELEASE - COUI	M	Yellow Cab Fare
304		DCSC	SELF	CDF	12/20/10 11:18 PM	23	COURT ORDERED RELEASE - COUI	M	Metro Fare Card
305		DCSC	SELF	CDF	2/25/11 4:48 AM	4	COURT ORDERED RELEASE - COUI	M	Yellow Cab Fare
306		DCSC	SELF	CDF	3/25/10 10:03 PM	22	COURT ORDERED RELEASE - MHU	M	Metro Fare Card
307		DCSC	SELF	CDF	4/12/10 11:52 PM	23	COURT ORDERED RELEASE - MHU	M	Metro Fare Card
308		DCSC	SELF	MHU	3/10/10 10:30 PM	22	COURT ORDERED RELEASE - MHU	M	Metro Fare Card

**Attachment
DOC Response to Q#14**

Number	Name	RELEASE AUTHORITY	RELEASE CUSTODY	RELEASED FROM	RELDATE & TIME	RELEASE HOUR	RELEASE TYPE	SEX	Type of Transport Offered Inmate
309		DCSC	SELF	MHU	4/12/10 10:23 PM	22	COURT ORDERED RELEASE - MHU	M	Metro Fare Card
310		DCSC	SELF	MHU	4/12/10 10:57 PM	22	COURT ORDERED RELEASE - MHU	M	Metro Fare Card
311		DCSC	SELF	MHU	4/12/10 11:08 PM	23	COURT ORDERED RELEASE - MHU	M	Metro Fare Card
312		DCSC	SELF	MHU	4/12/10 11:19 PM	23	COURT ORDERED RELEASE - MHU	M	Metro Fare Card
313		DCSC	SELF	MHU	4/12/10 11:28 PM	23	COURT ORDERED RELEASE - MHU	M	Metro Fare Card
314		DCSC	SELF	MHU	4/12/10 11:31 PM	23	COURT ORDERED RELEASE - MHU	M	Metro Fare Card
315		DCSC	SELF	MHU	4/12/10 11:45 PM	23	COURT ORDERED RELEASE - MHU	M	Metro Fare Card
316		DCSC	SELF	MHU	4/12/10 11:46 PM	23	COURT ORDERED RELEASE - MHU	M	Metro Fare Card
317		DCSC	SELF	MHU	4/19/10 10:13 PM	22	COURT ORDERED RELEASE - MHU	M	Metro Fare Card
318		DCSC	SELF	MHU	4/19/10 10:14 PM	22	COURT ORDERED RELEASE - MHU	M	Metro Fare Card
319		DCSC	SELF	MHU	4/19/10 10:20 PM	22	COURT ORDERED RELEASE - MHU	M	Metro Fare Card
320		DCSC	SELF	MHU	4/19/10 10:36 PM	22	COURT ORDERED RELEASE - MHU	M	Metro Fare Card
321		DCSC	SELF	MHU	4/19/10 10:46 PM	22	COURT ORDERED RELEASE - MHU	M	Metro Fare Card
322		DCSC	SELF	MHU	4/19/10 10:56 PM	22	COURT ORDERED RELEASE - MHU	M	Metro Fare Card
323		DCSC	SELF	MHU	5/25/10 10:04 PM	22	COURT ORDERED RELEASE - MHU	M	Metro Fare Card
324		DCSC	SELF	MHU	6/25/10 10:03 PM	22	COURT ORDERED RELEASE - MHU	M	Metro Fare Card
325		DCSC	SELF	MHU	6/25/10 10:13 PM	22	COURT ORDERED RELEASE - MHU	M	Metro Fare Card
326		DCSC	SELF	MHU	6/25/10 10:28 PM	22	COURT ORDERED RELEASE - MHU	M	Metro Fare Card
327		DCSC	SELF	MHU	6/25/10 10:31 PM	22	COURT ORDERED RELEASE - MHU	M	Metro Fare Card
328		DCSC	SELF	MHU	6/25/10 10:42 PM	22	COURT ORDERED RELEASE - MHU	M	Metro Fare Card
329		DCSC	SELF	MHU	6/25/10 10:42 PM	22	COURT ORDERED RELEASE - MHU	M	Metro Fare Card
330		DCSC	SELF	MHU	6/25/10 10:47 PM	22	COURT ORDERED RELEASE - MHU	M	Metro Fare Card
331		DCSC	SELF	MHU	6/25/10 10:59 PM	22	COURT ORDERED RELEASE - MHU	M	Metro Fare Card
332		DCSC	SELF	MHU	6/25/10 11:00 PM	23	COURT ORDERED RELEASE - MHU	M	Metro Fare Card
333		DCSC	SELF	MHU	6/25/10 11:12 PM	23	COURT ORDERED RELEASE - MHU	M	Metro Fare Card
334		DCSC	SELF	MHU	6/25/10 11:23 PM	23	COURT ORDERED RELEASE - MHU	M	Metro Fare Card
335		DCSC	SELF	MHU	6/25/10 11:29 PM	23	COURT ORDERED RELEASE - MHU	M	Metro Fare Card
336		DCSC	SELF	MHU	6/25/10 11:33 PM	23	COURT ORDERED RELEASE - MHU	M	Metro Fare Card
337		DCSC	SELF	MHU	6/25/10 11:43 PM	23	COURT ORDERED RELEASE - MHU	M	Metro Fare Card
338		DCSC	SELF	MHU	6/25/10 11:46 PM	23	COURT ORDERED RELEASE - MHU	M	Metro Fare Card
339		DCSC	SELF	MHU	6/25/10 11:49 PM	23	COURT ORDERED RELEASE - MHU	M	Metro Fare Card
340		DCSC	SELF	MHU	6/25/10 11:51 PM	23	COURT ORDERED RELEASE - MHU	M	Metro Fare Card
341		DCSC	SELF	MHU	8/6/10 10:09 PM	22	COURT ORDERED RELEASE - MHU	M	Metro Fare Card
342		DCSC	SELF	MHU	10/18/10 10:35 PM	22	COURT ORDERED RELEASE - MHU	M	Metro Fare Card
343		DCSC	SELF	MHU	12/6/10 10:00 PM	22	COURT ORDERED RELEASE - MHU	M	Metro Fare Card
344		DCSC	SELF	MHU	12/16/10 10:03 PM	22	COURT ORDERED RELEASE - MHU	M	Metro Fare Card
345		DCSC	SELF	MHU	12/16/10 10:04 PM	22	COURT ORDERED RELEASE - MHU	M	Metro Fare Card
346		DCSC	SELF	CDF	3/1/10 10:03 PM	22	EXPIRATION	M	Metro Fare Card
347		DCSC	SELF	CDF	3/1/10 10:16 PM	22	EXPIRATION	M	Metro Fare Card
348		DCSC	SELF	CDF	3/2/10 6:46 AM	6	EXPIRATION	M	Metro Fare Card
349		DCSC	SELF	CDF	3/2/10 6:56 AM	6	EXPIRATION	M	Metro Fare Card
350		DCSC	SELF	CDF	3/2/10 6:58 AM	6	EXPIRATION	M	Metro Fare Card
351		DCSC	SELF	CDF	3/2/10 6:59 AM	6	EXPIRATION	M	Metro Fare Card
352		DCSC	SELF	CDF	3/5/10 6:54 AM	6	EXPIRATION	M	Metro Fare Card

**Attachment
DOC Response to Q#14**

Number	Name	RELEASE AUTHORITY	RELEASE CUSTODY	RELEASED FROM	RELDATE & TIME	RELEASE HOUR	RELEASE TYPE	SEX	Type of Transport Offered Inmate
353		DCSC	SELF	CDF	3/6/10 6:19 AM	6	EXPIRATION	M	Metro Fare Card
354		DCSC	SELF	CDF	3/12/10 11:15 PM	23	EXPIRATION	M	Metro Fare Card
355		DCSC	SELF	CDF	3/19/10 10:02 PM	22	EXPIRATION	M	Metro Fare Card
356		FBOP	SELF	CDF	3/23/10 10:06 PM	22	EXPIRATION	M	Metro Fare Card
357		DCSC	SELF	CDF	3/24/10 10:53 PM	22	EXPIRATION	M	Metro Fare Card
358		DCSC	SELF	CDF	3/25/10 5:01 AM	5	EXPIRATION	M	Metro Fare Card
359		FBOP	SELF	CDF	3/25/10 10:28 PM	22	EXPIRATION	M	Metro Fare Card
360		DCSC	SELF	CDF	3/26/10 1:49 AM	1	EXPIRATION	M	Yellow Cab Fare
361		DCSC	SELF	CDF	3/26/10 11:22 PM	23	EXPIRATION	M	Metro Fare Card
362		DCSC	SELF	CDF	3/28/10 6:31 AM	6	EXPIRATION	M	Metro Fare Card
363		DCSC	SELF	CDF	3/31/10 10:16 PM	22	EXPIRATION	M	Metro Fare Card
364		DCSC	SELF	CDF	4/1/10 10:19 PM	22	EXPIRATION	M	Metro Fare Card
365		USDC	SELF	CDF	4/5/10 10:28 PM	22	EXPIRATION	M	Metro Fare Card
366		DCSC	SELF	CDF	4/9/10 6:59 AM	6	EXPIRATION	M	Metro Fare Card
367		DCSC	SELF	CDF	4/17/10 6:21 AM	6	EXPIRATION	M	Metro Fare Card
368		DCSC	SELF	CDF	4/19/10 6:57 AM	6	EXPIRATION	M	Metro Fare Card
369		DCSC	SELF	CDF	4/20/10 10:26 PM	22	EXPIRATION	M	Metro Fare Card
370		DCSC	SELF	CDF	4/20/10 10:50 PM	22	EXPIRATION	M	Metro Fare Card
371		DCSC	SELF	CDF	4/20/10 11:55 PM	23	EXPIRATION	M	Metro Fare Card
372		DCSC	SELF	CDF	4/23/10 10:41 PM	22	EXPIRATION	M	Metro Fare Card
373		DCSC	SELF	CDF	4/24/10 12:40 AM	0	EXPIRATION	M	Yellow Cab Fare
374		DCSC	SELF	CDF	4/25/10 5:01 AM	5	EXPIRATION	M	Metro Fare Card
375		DCSC	SELF	CDF	4/26/10 6:56 AM	6	EXPIRATION	M	Metro Fare Card
376		DCSC	SELF	CDF	4/27/10 6:54 AM	6	EXPIRATION	M	Metro Fare Card
377		FBOP	SELF	CDF	4/27/10 6:56 AM	6	EXPIRATION	M	Metro Fare Card
378		DCSC	SELF	CDF	4/27/10 6:57 AM	6	EXPIRATION	M	Metro Fare Card
379		DCSC	SELF	CDF	4/27/10 6:57 AM	6	EXPIRATION	M	Metro Fare Card
380		FBOP	SELF	CDF	4/27/10 6:58 AM	6	EXPIRATION	M	Metro Fare Card
381		DCSC	SELF	CDF	4/27/10 10:27 PM	22	EXPIRATION	M	Metro Fare Card
382		DCSC	SELF	CDF	4/27/10 10:28 PM	22	EXPIRATION	M	Metro Fare Card
383		DCSC	SELF	CDF	4/27/10 10:58 PM	22	EXPIRATION	M	Metro Fare Card
384		DCSC	SELF	CDF	4/28/10 6:44 AM	6	EXPIRATION	M	Metro Fare Card
385		DCSC	SELF	CDF	4/28/10 6:51 AM	6	EXPIRATION	M	Metro Fare Card
386		DCSC	SELF	CDF	4/28/10 6:53 AM	6	EXPIRATION	M	Metro Fare Card
387		DCSC	SELF	CDF	4/28/10 11:08 PM	23	EXPIRATION	M	Metro Fare Card
388		DCSC	SELF	CDF	5/2/10 5:11 AM	5	EXPIRATION	M	Metro Fare Card
389		DCSC	SELF	CDF	5/4/10 6:31 AM	6	EXPIRATION	M	Metro Fare Card
390		DCSC	SELF	CDF	5/8/10 6:13 AM	6	EXPIRATION	M	Metro Fare Card
391		DCSC	SELF	CDF	5/10/10 11:30 PM	23	EXPIRATION	M	Metro Fare Card
392		DCSC	SELF	CDF	5/11/10 1:49 AM	1	EXPIRATION	M	Yellow Cab Fare
393		DCSC	SELF	CDF	5/11/10 1:49 AM	1	EXPIRATION	M	Yellow Cab Fare
394		DCSC	SELF	CDF	5/11/10 1:50 AM	1	EXPIRATION	M	Yellow Cab Fare
395		DCSC	SELF	CDF	5/13/10 10:36 PM	22	EXPIRATION	M	Metro Fare Card
396		DCSC	SELF	CDF	5/15/10 6:27 AM	6	EXPIRATION	M	Metro Fare Card

**Attachment
DOC Response to Q#14**

Number	Name	RELEASE AUTHORITY	RELEASE CUSTODY	RELEASED FROM	RELDATE & TIME	RELEASE HOUR	RELEASE TYPE	SEX	Type of Transport Offered Inmate
397		DCSC	SELF	CDF	5/16/10 12:29 AM	0	EXPIRATION	M	Yellow Cab Fare
398		DCSC	SELF	CDF	5/17/10 10:24 PM	22	EXPIRATION	M	Metro Fare Card
399		DCSC	SELF	CDF	5/17/10 10:25 PM	22	EXPIRATION	M	Metro Fare Card
400		DCSC	SELF	CDF	5/19/10 11:15 PM	23	EXPIRATION	M	Metro Fare Card
401		DCSC	SELF	CDF	5/19/10 11:30 PM	23	EXPIRATION	M	Metro Fare Card
402		DCSC	SELF	CDF	5/20/10 10:19 PM	22	EXPIRATION	M	Metro Fare Card
403		DCSC	SELF	CDF	5/25/10 6:59 AM	6	EXPIRATION	M	Metro Fare Card
404		DCSC	SELF	CDF	5/25/10 10:20 PM	22	EXPIRATION	M	Metro Fare Card
405		DCSC	SELF	CDF	5/25/10 11:01 PM	23	EXPIRATION	M	Metro Fare Card
406		DCSC	SELF	CDF	5/27/10 11:49 PM	23	EXPIRATION	M	Metro Fare Card
407		DCSC	SELF	CDF	6/1/10 11:13 PM	23	EXPIRATION	M	Metro Fare Card
408		DCSC	SELF	CDF	6/2/10 11:14 PM	23	EXPIRATION	M	Metro Fare Card
409		DCSC	SELF	CDF	6/4/10 11:07 PM	23	EXPIRATION	M	Metro Fare Card
410		DCSC	SELF	CDF	6/4/10 11:34 PM	23	EXPIRATION	M	Metro Fare Card
411		DCSC	SELF	CDF	6/7/10 6:36 AM	6	EXPIRATION	M	Metro Fare Card
412		DCSC	SELF	CDF	6/7/10 6:36 AM	6	EXPIRATION	M	Metro Fare Card
413		DCSC	SELF	CDF	6/7/10 6:37 AM	6	EXPIRATION	M	Metro Fare Card
414		FBOP	SELF	CDF	6/7/10 6:38 AM	6	EXPIRATION	M	Metro Fare Card
415		DCSC	SELF	CDF	6/8/10 6:49 AM	6	EXPIRATION	M	Metro Fare Card
416		DCSC	SELF	CDF	6/8/10 6:50 AM	6	EXPIRATION	M	Metro Fare Card
417		DCSC	SELF	CDF	6/8/10 6:50 AM	6	EXPIRATION	M	Metro Fare Card
418		DCSC	SELF	CDF	6/8/10 6:51 AM	6	EXPIRATION	M	Metro Fare Card
419		DCSC	SELF	CDF	6/8/10 6:52 AM	6	EXPIRATION	M	Metro Fare Card
420		FBOP	SELF	CDF	6/8/10 11:11 PM	23	EXPIRATION	M	Metro Fare Card
421		DCSC	SELF	CDF	6/9/10 10:29 PM	22	EXPIRATION	M	Metro Fare Card
422		DCSC	SELF	CDF	6/10/10 10:14 PM	22	EXPIRATION	M	Metro Fare Card
423		DCSC	SELF	CDF	6/10/10 10:49 PM	22	EXPIRATION	M	Metro Fare Card
424		DCSC	SELF	CDF	6/12/10 6:54 AM	6	EXPIRATION	M	Metro Fare Card
425		DCSC	SELF	CDF	6/15/10 6:55 AM	6	EXPIRATION	M	Metro Fare Card
426		FBOP	SELF	CDF	6/15/10 6:57 AM	6	EXPIRATION	M	Metro Fare Card
427		DCSC	SELF	CDF	6/15/10 6:58 AM	6	EXPIRATION	M	Metro Fare Card
428		DCSC	SELF	CDF	6/15/10 10:39 PM	22	EXPIRATION	M	Metro Fare Card
429		DCSC	SELF	CDF	6/15/10 10:43 PM	22	EXPIRATION	M	Metro Fare Card
430		DCSC	SELF	CDF	6/16/10 2:48 AM	2	EXPIRATION	M	Yellow Cab Fare
431		DCSC	SELF	CDF	6/18/10 11:38 PM	23	EXPIRATION	M	Metro Fare Card
432		DCSC	SELF	CDF	6/22/10 6:46 AM	6	EXPIRATION	M	Metro Fare Card
433		DCSC	SELF	CDF	6/22/10 6:47 AM	6	EXPIRATION	M	Metro Fare Card
434		DCSC	SELF	CDF	6/22/10 6:48 AM	6	EXPIRATION	M	Metro Fare Card
435		DCSC	SELF	CDF	6/23/10 10:25 PM	22	EXPIRATION	M	Metro Fare Card
436		DCSC	SELF	CDF	6/27/10 5:51 AM	5	EXPIRATION	M	Metro Fare Card
437		DCSC	SELF	CDF	6/28/10 6:33 AM	6	EXPIRATION	M	Metro Fare Card
438		DCSC	SELF	CDF	6/28/10 6:36 AM	6	EXPIRATION	M	Metro Fare Card
439		FBOP	SELF	CDF	6/28/10 6:38 AM	6	EXPIRATION	M	Metro Fare Card
440		DCSC	SELF	CDF	6/28/10 6:40 AM	6	EXPIRATION	M	Metro Fare Card

**Attachment
DOC Response to Q#14**

Number	Name	RELEASE AUTHORITY	RELEASE CUSTODY	RELEASED FROM	RELDATE & TIME	RELEASE HOUR	RELEASE TYPE	SEX	Type of Transport Offered Inmate
441		DCSC	SELF	CDF	6/28/10 6:42 AM	6	EXPIRATION	M	Metro Fare Card
442		DCSC	SELF	CDF	6/29/10 10:33 PM	22	EXPIRATION	M	Metro Fare Card
443		DCSC	SELF	CDF	6/30/10 12:33 AM	0	EXPIRATION	M	Yellow Cab Fare
444		DCSC	SELF	CDF	6/30/10 10:21 PM	22	EXPIRATION	M	Metro Fare Card
445		DCSC	SELF	CDF	7/2/10 12:10 AM	0	EXPIRATION	M	Yellow Cab Fare
446		DCSC	SELF	CDF	7/4/10 6:08 AM	6	EXPIRATION	M	Metro Fare Card
447		DCSC	SELF	CDF	7/5/10 6:55 AM	6	EXPIRATION	M	Metro Fare Card
448		DCSC	SELF	CDF	7/8/10 6:53 AM	6	EXPIRATION	M	Metro Fare Card
449		DCSC	SELF	CDF	7/8/10 6:58 AM	6	EXPIRATION	M	Metro Fare Card
450		DCSC	SELF	CDF	7/9/10 10:03 PM	22	EXPIRATION	M	Metro Fare Card
451		DCSC	SELF	CDF	7/9/10 10:43 PM	22	EXPIRATION	M	Metro Fare Card
452		DCSC	SELF	CDF	7/12/10 10:45 PM	22	EXPIRATION	M	Metro Fare Card
453		DCSC	SELF	CDF	7/14/10 10:47 PM	22	EXPIRATION	M	Metro Fare Card
454		DCSC	SELF	CDF	7/15/10 10:31 PM	22	EXPIRATION	M	Metro Fare Card
455		DCSC	SELF	CDF	7/15/10 10:35 PM	22	EXPIRATION	M	Metro Fare Card
456		DCSC	SELF	CDF	7/16/10 11:17 PM	23	EXPIRATION	M	Metro Fare Card
457		DCSC	SELF	CDF	7/17/10 1:40 AM	1	EXPIRATION	M	Yellow Cab Fare
458		DCSC	SELF	CDF	7/19/10 11:07 PM	23	EXPIRATION	M	Metro Fare Card
459		DCSC	SELF	CDF	7/24/10 6:32 AM	6	EXPIRATION	M	Metro Fare Card
460		DCSC	SELF	CDF	7/27/10 11:44 PM	23	EXPIRATION	M	Metro Fare Card
461		FBOP	SELF	CDF	7/28/10 11:42 PM	23	EXPIRATION	M	Metro Fare Card
462		DCSC	SELF	CDF	8/1/10 6:50 AM	6	EXPIRATION	M	Metro Fare Card
463		DCSC	SELF	CDF	8/1/10 6:54 AM	6	EXPIRATION	M	Metro Fare Card
464		DCSC	SELF	CDF	8/8/10 6:59 AM	6	EXPIRATION	M	Metro Fare Card
465		DCSC	SELF	CDF	8/10/10 6:58 AM	6	EXPIRATION	M	Metro Fare Card
466		DCSC	SELF	CDF	8/10/10 6:59 AM	6	EXPIRATION	M	Metro Fare Card
467		DCSC	SELF	CDF	8/10/10 10:42 PM	22	EXPIRATION	M	Metro Fare Card
468		DCSC	SELF	CDF	8/10/10 11:16 PM	23	EXPIRATION	M	Metro Fare Card
469		DCSC	SELF	CDF	8/10/10 11:17 PM	23	EXPIRATION	M	Metro Fare Card
470		DCSC	SELF	CDF	8/15/10 5:58 AM	5	EXPIRATION	M	Metro Fare Card
471		DCSC	SELF	CDF	8/16/10 6:35 AM	6	EXPIRATION	M	Metro Fare Card
472		DCSC	SELF	CDF	8/16/10 6:36 AM	6	EXPIRATION	M	Metro Fare Card
473		DCSC	SELF	CDF	8/17/10 6:43 AM	6	EXPIRATION	M	Metro Fare Card
474		DCSC	SELF	CDF	8/17/10 6:44 AM	6	EXPIRATION	M	Metro Fare Card
475		DCSC	SELF	CDF	8/17/10 6:45 AM	6	EXPIRATION	M	Metro Fare Card
476		DCSC	SELF	CDF	8/17/10 6:46 AM	6	EXPIRATION	M	Metro Fare Card
477		DCSC	SELF	CDF	8/17/10 6:57 AM	6	EXPIRATION	M	Metro Fare Card
478		DCSC	SELF	CDF	8/17/10 6:58 AM	6	EXPIRATION	M	Metro Fare Card
479		DCSC	SELF	CDF	8/20/10 10:28 PM	22	EXPIRATION	M	Metro Fare Card
480		DCSC	SELF	CDF	8/22/10 6:59 AM	6	EXPIRATION	M	Metro Fare Card
481		DCSC	SELF	CDF	8/23/10 6:43 AM	6	EXPIRATION	M	Metro Fare Card
482		DCSC	SELF	CDF	8/23/10 6:47 AM	6	EXPIRATION	M	Metro Fare Card
483		DCSC	SELF	CDF	8/23/10 6:50 AM	6	EXPIRATION	M	Metro Fare Card
484		DCSC	SELF	CDF	8/23/10 6:51 AM	6	EXPIRATION	M	Metro Fare Card

**Attachment
DOC Response to Q#14**

Number	Name	RELEASE AUTHORITY	RELEASE CUSTODY	RELEASED FROM	RELDATE & TIME	RELEASE HOUR	RELEASE TYPE	SEX	Type of Transport Offered Inmate
485		DCSC	SELF	CDF	8/23/10 6:52 AM	6	EXPIRATION	M	Metro Fare Card
486		DCSC	SELF	CDF	8/23/10 6:55 AM	6	EXPIRATION	M	Metro Fare Card
487		DCSC	SELF	CDF	8/23/10 6:58 AM	6	EXPIRATION	M	Metro Fare Card
488		DCSC	SELF	CDF	8/25/10 11:08 PM	23	EXPIRATION	M	Metro Fare Card
489		DCSC	SELF	CDF	8/26/10 6:57 AM	6	EXPIRATION	M	Metro Fare Card
490		DCSC	SELF	CDF	8/26/10 6:58 AM	6	EXPIRATION	M	Metro Fare Card
491		DCSC	SELF	CDF	8/27/10 11:17 PM	23	EXPIRATION	M	Metro Fare Card
492		DCSC	SELF	CDF	8/28/10 6:52 AM	6	EXPIRATION	M	Metro Fare Card
493		DCSC	SELF	CDF	8/30/10 10:06 PM	22	EXPIRATION	M	Metro Fare Card
494		DCSC	SELF	CDF	9/1/10 10:33 PM	22	EXPIRATION	M	Metro Fare Card
495		DCSC	SELF	CDF	9/8/10 6:48 AM	6	EXPIRATION	M	Metro Fare Card
496		DCSC	SELF	CDF	9/9/10 6:47 AM	6	EXPIRATION	M	Metro Fare Card
497		DCSC	SELF	CDF	9/9/10 6:48 AM	6	EXPIRATION	M	Metro Fare Card
498		DCSC	SELF	CDF	9/9/10 6:49 AM	6	EXPIRATION	M	Metro Fare Card
499		DCSC	SELF	CDF	9/9/10 6:50 AM	6	EXPIRATION	M	Metro Fare Card
500		DCSC	SELF	CDF	9/9/10 11:33 PM	23	EXPIRATION	M	Metro Fare Card
501		DCSC	SELF	CDF	9/10/10 10:06 PM	22	EXPIRATION	M	Metro Fare Card
502		DCSC	SELF	CDF	9/10/10 10:10 PM	22	EXPIRATION	M	Metro Fare Card
503		DCSC	SELF	CDF	9/11/10 6:58 AM	6	EXPIRATION	M	Metro Fare Card
504		DCSC	SELF	CDF	9/12/10 5:55 AM	5	EXPIRATION	M	Metro Fare Card
505		DCSC	SELF	CDF	9/15/10 6:57 AM	6	EXPIRATION	M	Metro Fare Card
506		DCSC	SELF	CDF	9/15/10 10:27 PM	22	EXPIRATION	M	Metro Fare Card
507		DCSC	SELF	CDF	9/16/10 6:49 AM	6	EXPIRATION	M	Metro Fare Card
508		DCSC	SELF	CDF	9/16/10 6:52 AM	6	EXPIRATION	M	Metro Fare Card
509		DCSC	SELF	CDF	9/16/10 11:29 PM	23	EXPIRATION	M	Metro Fare Card
510		FBOP	OTHER	CDF	9/17/10 6:46 AM	6	EXPIRATION	M	Metro Fare Card
511		DCSC	SELF	CDF	9/17/10 10:25 PM	22	EXPIRATION	M	Metro Fare Card
512		DCSC	SELF	CDF	9/18/10 6:55 AM	6	EXPIRATION	M	Metro Fare Card
513		FBOP	SELF	CDF	9/22/10 6:52 AM	6	EXPIRATION	M	Metro Fare Card
514		DCSC	SELF	CDF	9/25/10 6:21 AM	6	EXPIRATION	M	Metro Fare Card
515		DCSC	SELF	CDF	9/26/10 6:01 AM	6	EXPIRATION	M	Metro Fare Card
516		DCSC	SELF	CDF	9/26/10 6:12 AM	6	EXPIRATION	M	Metro Fare Card
517		DCSC	SELF	CDF	9/26/10 6:18 AM	6	EXPIRATION	M	Metro Fare Card
518		DCSC	SELF	CDF	9/30/10 10:02 PM	22	EXPIRATION	M	Metro Fare Card
519		OTHER	SELF	CDF	10/1/10 10:12 PM	22	EXPIRATION	M	Metro Fare Card
520		DCSC	SELF	CDF	10/2/10 6:51 AM	6	EXPIRATION	M	Metro Fare Card
521		DCSC	SELF	CDF	10/4/10 10:56 PM	22	EXPIRATION	M	Metro Fare Card
522		DCSC	SELF	CDF	10/10/10 5:57 AM	5	EXPIRATION	M	Metro Fare Card
523		DCSC	SELF	CDF	10/11/10 6:59 AM	6	EXPIRATION	M	Metro Fare Card
524		DCSC	SELF	CDF	10/16/10 6:24 AM	6	EXPIRATION	M	Metro Fare Card
525		DCSC	SELF	CDF	10/16/10 6:25 AM	6	EXPIRATION	M	Metro Fare Card
526		DCSC	SELF	CDF	10/17/10 5:57 AM	5	EXPIRATION	M	Metro Fare Card
527		DCSC	SELF	CDF	10/19/10 10:48 PM	22	EXPIRATION	M	Metro Fare Card
528		DCSC	SELF	CDF	10/22/10 10:09 PM	22	EXPIRATION	M	Metro Fare Card

**Attachment
DOC Response to Q#14**

Number	Name	RELEASE AUTHORITY	RELEASE CUSTODY	RELEASED FROM	RELDATE & TIME	RELEASE HOUR	RELEASE TYPE	SEX	Type of Transport Offered Inmate
529		DCSC	SELF	CDF	10/24/10 6:14 AM	6	EXPIRATION	M	Metro Fare Card
530		DCSC	SELF	CDF	10/28/10 10:14 PM	22	EXPIRATION	M	Metro Fare Card
531		DCSC	SELF	CDF	10/28/10 11:14 PM	23	EXPIRATION	M	Metro Fare Card
532		DCSC	SELF	CDF	10/29/10 10:07 PM	22	EXPIRATION	M	Metro Fare Card
533		DCSC	SELF	CDF	10/31/10 6:02 AM	6	EXPIRATION	M	Metro Fare Card
534		DCSC	SELF	CDF	11/2/10 11:22 PM	23	EXPIRATION	M	Metro Fare Card
535		DCSC	SELF	CDF	11/5/10 10:28 PM	22	EXPIRATION	M	Metro Fare Card
536		DCSC	SELF	CDF	11/6/10 5:46 AM	5	EXPIRATION	M	Metro Fare Card
537		DCSC	SELF	CDF	11/10/10 10:09 PM	22	EXPIRATION	M	Metro Fare Card
538		DCSC	SELF	CDF	11/12/10 10:13 PM	22	EXPIRATION	M	Metro Fare Card
539		DCSC	SELF	CDF	11/19/10 10:30 PM	22	EXPIRATION	M	Metro Fare Card
540		DCSC	SELF	CDF	11/22/10 11:49 PM	23	EXPIRATION	M	Metro Fare Card
541		DCSC	SELF	CDF	11/23/10 6:53 AM	6	EXPIRATION	M	Metro Fare Card
542		DCSC	SELF	CDF	11/23/10 10:23 PM	22	EXPIRATION	M	Metro Fare Card
543		DCSC	SELF	CDF	11/24/10 6:48 AM	6	EXPIRATION	M	Metro Fare Card
544		DCSC	SELF	CDF	11/24/10 6:53 AM	6	EXPIRATION	M	Metro Fare Card
545		DCSC	SELF	CDF	11/26/10 6:48 AM	6	EXPIRATION	M	Metro Fare Card
546		DCSC	SELF	CDF	11/26/10 6:49 AM	6	EXPIRATION	M	Metro Fare Card
547		FBOP	SELF	CDF	11/26/10 6:50 AM	6	EXPIRATION	M	Metro Fare Card
548		DCSC	SELF	CDF	11/26/10 6:51 AM	6	EXPIRATION	M	Metro Fare Card
549		DCSC	SELF	CDF	11/26/10 6:53 AM	6	EXPIRATION	M	Metro Fare Card
550		DCSC	SELF	CDF	11/30/10 12:13 AM	0	EXPIRATION	M	Yellow Cab Fare
551		DCSC	SELF	CDF	12/1/10 1:30 AM	1	EXPIRATION	M	Yellow Cab Fare
552		DCSC	SELF	CDF	12/5/10 6:13 AM	6	EXPIRATION	M	Metro Fare Card
553		DCSC	SELF	CDF	12/6/10 10:47 PM	22	EXPIRATION	M	Metro Fare Card
554		DCSC	SELF	CDF	12/9/10 10:02 PM	22	EXPIRATION	M	Metro Fare Card
555		DCSC	SELF	CDF	12/9/10 11:33 PM	23	EXPIRATION	M	Metro Fare Card
556		DCSC	SELF	CDF	12/10/10 1:29 AM	1	EXPIRATION	M	Yellow Cab Fare
557		DCSC	SELF	CDF	12/11/10 1:35 AM	1	EXPIRATION	M	Yellow Cab Fare
558		DCSC	SELF	CDF	12/13/10 10:36 PM	22	EXPIRATION	M	Metro Fare Card
559		DCSC	SELF	CDF	12/13/10 10:37 PM	22	EXPIRATION	M	Metro Fare Card
560		DCSC	SELF	CDF	12/13/10 11:09 PM	23	EXPIRATION	M	Metro Fare Card
561		DCSC	SELF	CDF	12/13/10 11:13 PM	23	EXPIRATION	M	Metro Fare Card
562		DCSC	SELF	CDF	12/14/10 11:17 PM	23	EXPIRATION	M	Metro Fare Card
563		DCSC	SELF	CDF	12/16/10 10:38 PM	22	EXPIRATION	M	Metro Fare Card
564		DCSC	SELF	CDF	12/17/10 11:54 PM	23	EXPIRATION	M	Metro Fare Card
565		DCSC	SELF	CDF	12/31/10 6:05 AM	6	EXPIRATION	M	Metro Fare Card
566		DCSC	SELF	CDF	1/1/11 5:57 AM	5	EXPIRATION	M	Metro Fare Card
567		DCSC	SELF	CDF	1/9/11 6:23 AM	6	EXPIRATION	M	Metro Fare Card
568		DCSC	SELF	CDF	1/10/11 10:31 PM	22	EXPIRATION	M	Metro Fare Card
569		DCSC	SELF	CDF	1/20/11 10:12 PM	22	EXPIRATION	M	Metro Fare Card
570		DCSC	SELF	CDF	1/25/11 6:52 AM	6	EXPIRATION	M	Metro Fare Card
571		DCSC	SELF	CDF	1/28/11 10:17 PM	22	EXPIRATION	M	Metro Fare Card
572		DCSC	SELF	CDF	1/30/11 6:16 AM	6	EXPIRATION	M	Metro Fare Card

**Attachment
DOC Response to Q#14**

Number	Name	RELEASE AUTHORITY	RELEASE CUSTODY	RELEASED FROM	RELDATE & TIME	RELEASE HOUR	RELEASE TYPE	SEX	Type of Transport Offered Inmate
573		DCSC	SELF	CDF	1/31/11 6:32 AM	6	EXPIRATION	M	Metro Fare Card
574		DCSC	SELF	CDF	1/31/11 10:26 PM	22	EXPIRATION	M	Metro Fare Card
575		DCSC	SELF	CDF	2/5/11 6:59 AM	6	EXPIRATION	M	Metro Fare Card
576		DCSC	SELF	CDF	2/8/11 11:43 PM	23	EXPIRATION	M	Metro Fare Card
577		DCSC	SELF	CDF	2/12/11 12:19 AM	0	EXPIRATION	M	Yellow Cab Fare
578		DCSC	SELF	CDF	2/22/11 10:55 PM	22	EXPIRATION	M	Metro Fare Card
579		DCSC	OTHER	CDF	3/2/10 4:57 AM	4	FUGITIVE WAIVER	M	Yellow Cab Fare
580		DCSC	OTHER	CDF	3/4/10 3:15 AM	3	FUGITIVE WAIVER	M	Yellow Cab Fare
581		DCSC	OTHER	CDF	3/20/10 1:25 AM	1	FUGITIVE WAIVER	M	Yellow Cab Fare
582		DCSC	OTHER	CDF	7/6/10 12:19 AM	0	FUGITIVE WAIVER	M	Yellow Cab Fare
583		DCSC	OTHER	CDF	8/3/10 5:06 AM	5	FUGITIVE WAIVER	M	Metro Fare Card
584		DCSC	OTHER	CDF	8/13/10 12:50 AM	0	FUGITIVE WAIVER	M	Yellow Cab Fare
585		DCSC	OTHER	CDF	8/13/10 1:13 AM	1	FUGITIVE WAIVER	M	Yellow Cab Fare
586		DCSC	OTHER	CDF	8/20/10 12:38 AM	0	FUGITIVE WAIVER	M	Yellow Cab Fare
587		DCSC	OTHER	CDF	9/8/10 6:36 AM	6	FUGITIVE WAIVER	M	Metro Fare Card
588		DCSC	OTHER	CDF	9/11/10 10:20 PM	22	FUGITIVE WAIVER	M	Metro Fare Card
589		DCSC	OTHER	CDF	10/17/10 5:00 AM	5	FUGITIVE WAIVER	M	Metro Fare Card
590		DCSC	OTHER	CDF	11/9/10 5:33 AM	5	FUGITIVE WAIVER	M	Metro Fare Card
591		DCSC	OTHER	CDF	11/30/10 3:34 AM	3	FUGITIVE WAIVER	M	Yellow Cab Fare
592		DCSC	OTHER	CDF	11/30/10 5:03 AM	5	FUGITIVE WAIVER	M	Metro Fare Card
593		DCSC	OTHER	CDF	12/16/10 3:29 AM	3	FUGITIVE WAIVER	M	Yellow Cab Fare
594		DCSC	OTHER	CDF	1/4/11 3:51 AM	3	FUGITIVE WAIVER	M	Yellow Cab Fare
595		DCSC	OTHER	CDF	1/7/11 2:55 AM	2	FUGITIVE WAIVER	M	Yellow Cab Fare
596		USPC	SELF	CDF	3/5/10 1:34 AM	1	MANDATORY REL-PAROLE	M	Yellow Cab Fare
597		USPC	OTHER	CDF	4/12/10 10:33 PM	22	MANDATORY REL-PAROLE	M	Metro Fare Card
598		DCSC	SELF	CDF	3/8/10 10:22 PM	22	OTHER	M	Metro Fare Card
599		USPC	SELF	CDF	3/10/10 10:16 PM	22	OTHER	M	Metro Fare Card
600		OTHER	OTHER	CDF	3/24/10 12:57 AM	0	OTHER	M	Yellow Cab Fare
601		USPC	SELF	CDF	5/4/10 10:04 PM	22	OTHER	M	Metro Fare Card
602		USPC	SELF	CDF	6/8/10 10:48 PM	22	OTHER	M	Metro Fare Card
603		DCSC	SELF	CDF	6/11/10 11:52 PM	23	OTHER	M	Metro Fare Card
604		OTHER	SELF	CDF	9/17/10 10:23 PM	22	OTHER	M	Metro Fare Card
605		USDC	OTHER	CDF	10/2/10 4:39 AM	4	OTHER	M	Yellow Cab Fare
606		USPC	SELF	CDF	11/5/10 10:06 PM	22	OTHER	M	Metro Fare Card
607		USPC	SELF	CDF	3/23/10 10:05 PM	22	PAROLE	M	Metro Fare Card
608		USPC	SELF	CDF	4/2/10 10:04 PM	22	PAROLE	M	Metro Fare Card
609		USPC	SELF	CDF	4/26/10 10:42 PM	22	PAROLE	M	Metro Fare Card
610		USPC	SELF	CDF	7/12/10 10:37 PM	22	PAROLE	M	Metro Fare Card
611		USPC	SELF	CDF	8/23/10 10:36 PM	22	PAROLE	M	Metro Fare Card
612		USPC	SELF	CDF	12/28/10 12:08 AM	0	PAROLE	M	Yellow Cab Fare
613		DCSC	SELF	CDF	3/3/10 4:59 AM	4	SANCTION	M	Yellow Cab Fare
614		DCSC	SELF	CDF	3/8/10 4:57 AM	4	SANCTION	M	Yellow Cab Fare
615		DCSC	SELF	CDF	3/25/10 5:00 AM	5	SANCTION	M	Metro Fare Card
616		DCSC	SELF	CDF	4/4/10 6:59 AM	6	SANCTION	M	Metro Fare Card

**Attachment
DOC Response to Q#14**

Number	Name	RELEASE AUTHORITY	RELEASE CUSTODY	RELEASED FROM	RELDATE & TIME	RELEASE HOUR	RELEASE TYPE	SEX	Type of Transport Offered Inmate
617		DCSC	SELF	CDF	4/5/10 5:00 AM	5	SANCTION	M	Metro Fare Card
618		DCSC	SELF	CDF	4/8/10 5:20 AM	5	SANCTION	M	Metro Fare Card
619		DCSC	SELF	CDF	4/9/10 6:54 AM	6	SANCTION	M	Metro Fare Card
620		DCSC	SELF	CDF	4/13/10 5:56 AM	5	SANCTION	M	Metro Fare Card
621		DCSC	SELF	CDF	4/17/10 6:58 AM	6	SANCTION	M	Metro Fare Card
622		DCSC	SELF	CDF	4/17/10 6:59 AM	6	SANCTION	M	Metro Fare Card
623		DCSC	SELF	CDF	4/18/10 4:58 AM	4	SANCTION	M	Yellow Cab Fare
624		DCSC	SELF	CDF	4/20/10 6:57 AM	6	SANCTION	M	Metro Fare Card
625		DCSC	SELF	CDF	4/25/10 5:06 AM	5	SANCTION	M	Metro Fare Card
626		DCSC	SELF	CDF	5/2/10 5:12 AM	5	SANCTION	M	Metro Fare Card
627		DCSC	SELF	CDF	5/3/10 6:59 AM	6	SANCTION	M	Metro Fare Card
628		DCSC	SELF	CDF	5/18/10 6:55 AM	6	SANCTION	M	Metro Fare Card
629		DCSC	SELF	CDF	5/25/10 4:59 AM	4	SANCTION	M	Yellow Cab Fare
630		DCSC	SELF	CDF	5/26/10 6:59 AM	6	SANCTION	M	Metro Fare Card
631		DCSC	SELF	CDF	5/27/10 5:02 AM	5	SANCTION	M	Metro Fare Card
632		DCSC	SELF	CDF	6/6/10 6:54 AM	6	SANCTION	M	Metro Fare Card
633		DCSC	SELF	CDF	6/7/10 5:03 AM	5	SANCTION	M	Metro Fare Card
634		DCSC	SELF	CDF	6/8/10 4:58 AM	4	SANCTION	M	Yellow Cab Fare
635		DCSC	SELF	CDF	6/9/10 6:59 AM	6	SANCTION	M	Metro Fare Card
636		DCSC	SELF	CDF	6/13/10 6:54 AM	6	SANCTION	M	Metro Fare Card
637		DCSC	SELF	CDF	6/14/10 5:01 AM	5	SANCTION	M	Metro Fare Card
638		DCSC	SELF	CDF	6/16/10 6:53 AM	6	SANCTION	M	Metro Fare Card
639		DCSC	SELF	CDF	6/20/10 6:58 AM	6	SANCTION	M	Metro Fare Card
640		DCSC	SELF	CDF	6/25/10 4:57 AM	4	SANCTION	M	Yellow Cab Fare
641		DCSC	SELF	CDF	6/28/10 6:57 AM	6	SANCTION	M	Metro Fare Card
642		DCSC	SELF	CDF	6/28/10 6:58 AM	6	SANCTION	M	Metro Fare Card
643		DCSC	SELF	CDF	6/30/10 6:58 AM	6	SANCTION	M	Metro Fare Card
644		DCSC	SELF	CDF	7/1/10 6:56 AM	6	SANCTION	M	Metro Fare Card
645		DCSC	SELF	CDF	7/2/10 6:49 AM	6	SANCTION	M	Metro Fare Card
646		DCSC	SELF	CDF	7/12/10 5:00 AM	5	SANCTION	M	Metro Fare Card
647		DCSC	SELF	CDF	7/12/10 6:58 AM	6	SANCTION	M	Metro Fare Card
648		DCSC	SELF	CDF	7/14/10 6:58 AM	6	SANCTION	M	Metro Fare Card
649		DCSC	SELF	CDF	7/14/10 6:59 AM	6	SANCTION	M	Metro Fare Card
650		DCSC	SELF	CDF	7/15/10 6:57 AM	6	SANCTION	M	Metro Fare Card
651		DCSC	SELF	CDF	7/15/10 6:58 AM	6	SANCTION	M	Metro Fare Card
652		DCSC	SELF	CDF	7/16/10 6:29 AM	6	SANCTION	M	Metro Fare Card
653		DCSC	SELF	CDF	7/19/10 5:20 AM	5	SANCTION	M	Metro Fare Card
654		DCSC	SELF	CDF	7/21/10 6:59 AM	6	SANCTION	M	Metro Fare Card
655		DCSC	SELF	CDF	7/29/10 6:59 AM	6	SANCTION	M	Metro Fare Card
656		DCSC	SELF	CDF	8/5/10 6:55 AM	6	SANCTION	M	Metro Fare Card
657		DCSC	SELF	CDF	8/5/10 6:56 AM	6	SANCTION	M	Metro Fare Card
658		DCSC	SELF	CDF	8/7/10 6:14 AM	6	SANCTION	M	Metro Fare Card
659		DCSC	SELF	CDF	8/10/10 6:57 AM	6	SANCTION	M	Metro Fare Card
660		DCSC	SELF	CDF	8/12/10 6:58 AM	6	SANCTION	M	Metro Fare Card

**Attachment
DOC Response to Q#14**

Number	Name	RELEASE AUTHORITY	RELEASE CUSTODY	RELEASED FROM	RELDATE & TIME	RELEASE HOUR	RELEASE TYPE	SEX	Type of Transport Offered Inmate
661		DCSC	SELF	CDF	8/15/10 5:04 AM	5	SANCTION	M	Metro Fare Card
662		DCSC	SELF	CDF	8/19/10 6:58 AM	6	SANCTION	M	Metro Fare Card
663		DCSC	SELF	CDF	8/20/10 5:08 AM	5	SANCTION	M	Metro Fare Card
664		DCSC	SELF	CDF	8/29/10 6:57 AM	6	SANCTION	M	Metro Fare Card
665		DCSC	SELF	CDF	8/29/10 6:58 AM	6	SANCTION	M	Metro Fare Card
666		DCSC	SELF	CDF	9/4/10 6:59 AM	6	SANCTION	M	Metro Fare Card
667		DCSC	SELF	CDF	9/5/10 6:55 AM	6	SANCTION	M	Metro Fare Card
668		DCSC	SELF	CDF	9/6/10 6:59 AM	6	SANCTION	M	Metro Fare Card
669		DCSC	SELF	CDF	9/8/10 6:46 AM	6	SANCTION	M	Metro Fare Card
670		DCSC	SELF	CDF	9/8/10 6:47 AM	6	SANCTION	M	Metro Fare Card
671		DCSC	SELF	CDF	9/8/10 6:52 AM	6	SANCTION	M	Metro Fare Card
672		DCSC	SELF	CDF	9/9/10 6:55 AM	6	SANCTION	M	Metro Fare Card
673		DCSC	SELF	CDF	9/10/10 4:57 AM	4	SANCTION	M	Yellow Cab Fare
674		DCSC	SELF	CDF	9/12/10 6:59 AM	6	SANCTION	M	Metro Fare Card
675		DCSC	SELF	CDF	9/13/10 6:40 AM	6	SANCTION	M	Metro Fare Card
676		DCSC	SELF	CDF	9/17/10 6:56 AM	6	SANCTION	M	Metro Fare Card
677		DCSC	SELF	CDF	9/19/10 6:57 AM	6	SANCTION	M	Metro Fare Card
678		DCSC	SELF	CDF	9/19/10 6:58 AM	6	SANCTION	M	Metro Fare Card
679		DCSC	SELF	CDF	9/20/10 5:05 AM	5	SANCTION	M	Metro Fare Card
680		DCSC	SELF	CDF	9/20/10 5:05 AM	5	SANCTION	M	Metro Fare Card
681		DCSC	SELF	CDF	9/20/10 6:53 AM	6	SANCTION	M	Metro Fare Card
682		DCSC	SELF	CDF	9/20/10 6:59 AM	6	SANCTION	M	Metro Fare Card
683		DCSC	SELF	CDF	9/27/10 5:14 AM	5	SANCTION	M	Metro Fare Card
684		DCSC	SELF	CDF	9/30/10 4:56 AM	4	SANCTION	M	Yellow Cab Fare
685		DCSC	SELF	CDF	10/1/10 4:59 AM	4	SANCTION	M	Yellow Cab Fare
686		DCSC	SELF	CDF	10/4/10 4:59 AM	4	SANCTION	M	Yellow Cab Fare
687		DCSC	SELF	CDF	10/4/10 5:00 AM	5	SANCTION	M	Metro Fare Card
688		DCSC	SELF	CDF	10/6/10 6:59 AM	6	SANCTION	M	Metro Fare Card
689		DCSC	SELF	CDF	10/11/10 5:01 AM	5	SANCTION	M	Metro Fare Card
690		DCSC	SELF	CDF	10/15/10 5:02 AM	5	SANCTION	M	Metro Fare Card
691		DCSC	SELF	CDF	10/22/10 5:17 AM	5	SANCTION	M	Metro Fare Card
692		DCSC	SELF	CDF	11/7/10 6:59 AM	6	SANCTION	M	Metro Fare Card
693		DCSC	SELF	CDF	11/23/10 6:56 AM	6	SANCTION	M	Metro Fare Card
694		DCSC	SELF	CDF	11/25/10 6:59 AM	6	SANCTION	M	Metro Fare Card
695		DCSC	SELF	CDF	12/9/10 6:59 AM	6	SANCTION	M	Metro Fare Card
696		DCSC	SELF	CDF	12/13/10 5:00 AM	5	SANCTION	M	Metro Fare Card
697		DCSC	SELF	CDF	12/13/10 5:09 AM	5	SANCTION	M	Metro Fare Card
698		DCSC	SELF	CDF	12/13/10 6:59 AM	6	SANCTION	M	Metro Fare Card
699		DCSC	SELF	CDF	12/18/10 6:59 AM	6	SANCTION	M	Metro Fare Card
700		DCSC	SELF	CDF	12/21/10 6:59 AM	6	SANCTION	M	Metro Fare Card
701		DCSC	SELF	CDF	12/24/10 6:53 AM	6	SANCTION	M	Metro Fare Card
702		DCSC	SELF	CDF	12/31/10 6:59 AM	6	SANCTION	M	Metro Fare Card
703		DCSC	SELF	CDF	1/6/11 5:14 AM	5	SANCTION	M	Metro Fare Card
704		DCSC	SELF	CDF	1/10/11 4:56 AM	4	SANCTION	M	Yellow Cab Fare

**Attachment
DOC Response to Q#14**

Number	Name	RELEASE AUTHORITY	RELEASE CUSTODY	RELEASED FROM	RELDATE & TIME	RELEASE HOUR	RELEASE TYPE	SEX	Type of Transport Offered Inmate
705		DCSC	SELF	CDF	1/10/11 6:57 AM	6	SANCTION	M	Metro Fare Card
706		DCSC	SELF	CDF	1/17/11 6:13 AM	6	SANCTION	M	Metro Fare Card
707		DCSC	SELF	CDF	1/17/11 6:59 AM	6	SANCTION	M	Metro Fare Card
708		DCSC	SELF	CDF	1/24/11 5:00 AM	5	SANCTION	M	Metro Fare Card
709		DCSC	SELF	CDF	2/7/11 5:02 AM	5	SANCTION	M	Metro Fare Card
710		DCSC	SELF	CDF	2/11/11 6:58 AM	6	SANCTION	M	Metro Fare Card
711		DCSC	SELF	CDF	2/15/11 6:58 AM	6	SANCTION	M	Metro Fare Card
712		DCSC	SELF	CDF	2/23/11 6:59 AM	6	SANCTION	M	Metro Fare Card
713		DCSC	SELF	CDF	2/28/11 5:02 AM	5	SANCTION	M	Metro Fare Card
714		DCSC	SELF	CDF	2/28/11 5:12 AM	5	SANCTION	M	Metro Fare Card
715		DCSC	SELF	CDF	4/12/10 10:48 PM	22	TIME SERVED OR SUSPENDED	M	Metro Fare Card
716		DCSC	SELF	CDF	4/27/10 10:26 PM	22	TIME SERVED OR SUSPENDED	M	Metro Fare Card
717		USDC	SELF	CDF	5/24/10 10:18 PM	22	TIME SERVED OR SUSPENDED	M	Metro Fare Card
718		DCSC	SELF	CDF	7/15/10 10:16 PM	22	TIME SERVED OR SUSPENDED	M	Metro Fare Card
719		USDC	SELF	CDF	8/10/10 11:16 PM	23	TIME SERVED OR SUSPENDED	M	Metro Fare Card
720		DCSC	SELF	CDF	3/1/10 6:05 AM	6	WEEKENDER EXPIRATION	M	Metro Fare Card
721		DCSC	SELF	CDF	4/26/10 6:00 AM	6	WEEKENDER EXPIRATION	M	Metro Fare Card
722		DCSC	SELF	CDF	5/10/10 6:04 AM	6	WEEKENDER EXPIRATION	M	Metro Fare Card
723		DCSC	SELF	CDF	5/21/10 11:33 PM	23	WEEKENDER EXPIRATION	M	Metro Fare Card
724		DCSC	SELF	CDF	7/9/10 10:23 PM	22	WEEKENDER EXPIRATION	M	Metro Fare Card
725		DCSC	SELF	CDF	7/25/10 5:58 AM	5	WEEKENDER EXPIRATION	M	Metro Fare Card
726		DCSC	SELF	CDF	8/2/10 4:59 AM	4	WEEKENDER EXPIRATION	M	Yellow Cab Fare
727		DCSC	SELF	CDF	8/8/10 5:59 AM	5	WEEKENDER EXPIRATION	M	Metro Fare Card
728		DCSC	SELF	CDF	9/18/10 12:31 AM	0	WEEKENDER EXPIRATION	M	Yellow Cab Fare
729		DCSC	SELF	CDF	10/8/10 10:25 PM	22	WEEKENDER EXPIRATION	M	Metro Fare Card
730		DCSC	SELF	CDF	10/22/10 1:36 AM	1	WEEKENDER EXPIRATION	M	Yellow Cab Fare
731		DCSC	SELF	CDF	11/5/10 10:52 PM	22	WEEKENDER EXPIRATION	M	Metro Fare Card
732		DCSC	SELF	CDF	12/2/10 6:10 AM	6	WEEKENDER EXPIRATION	M	Metro Fare Card
733		DCSC	SELF	CDF	1/1/11 6:00 AM	6	WEEKENDER EXPIRATION	M	Metro Fare Card
734		DCSC	SELF	CDF	1/5/11 6:36 AM	6	WEEKENDER EXPIRATION	M	Metro Fare Card
735		DCSC	SELF	CDF	1/16/11 12:53 AM	0	WEEKENDER EXPIRATION	M	Yellow Cab Fare
736		DCSC	SELF	CDF	2/5/11 1:54 AM	1	WEEKENDER EXPIRATION	M	Yellow Cab Fare
737		DCSC	SELF	CDF	2/12/11 6:20 AM	6	WEEKENDER EXPIRATION	M	Metro Fare Card
738		DCSC	SELF	CDF	2/14/11 6:13 AM	6	WEEKENDER EXPIRATION	M	Metro Fare Card